



ELECTRONIC COPY

LG532274397

LABORATORY GROWN DIAMOND REPORT

GRADING SCALES

COLOR GRADING SCALE	CL	NC	FT	VL	LT	
	COLORLESS D-F	NEAR COLORLESS G-J	FAINT K-M	VERY LIGHT N-R	LIGHT S-Z	
CLARITY (10x) GRADING SCALE	FL	IF	VVS	VS	SI	I
	FLAWLESS INTERNALLY FLAWLESS	VERY VERY SLIGHTLY INCLUDED	VERY SLIGHTLY INCLUDED	SLIGHTLY INCLUDED	INCLUDED	

June 10, 2022

IGI Report Number

LG532274397

Description

**LABORATORY GROWN
DIAMOND**

Shape and Cutting Style

ROUND BRILLIANT

Measurements

6.51 - 6.54 X 4.02 MM

GRADING RESULTS

Carat Weight

1.05 CARAT

Color Grade

D

Clarity Grade

VS 1

Cut Grade

IDEAL

June 10, 2022

IGI Report Number

LG532274397

Description

**LABORATORY GROWN
DIAMOND**

Shape and Cutting Style

ROUND BRILLIANT

Measurements

6.51 - 6.54 X 4.02 MM

GRADING RESULTS

Carat Weight

1.05 CARAT

Color Grade

D

Clarity Grade

VS 1

Cut Grade

IDEAL

ADDITIONAL GRADING INFORMATION

Polish

EXCELLENT

Symmetry

EXCELLENT

Fluorescence

NONE

Inscription(s)

LABGROWN IGI LG532274397

Comments: HEARTS & ARROWS

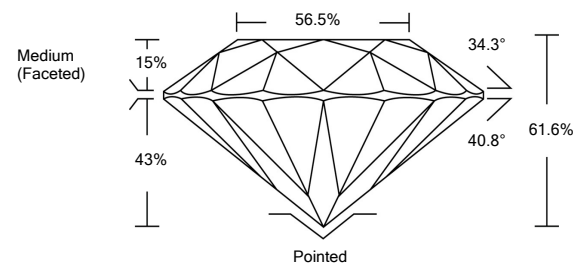
As Grown - No indication of post-growth treatment.

This Laboratory Grown Diamond was created by High

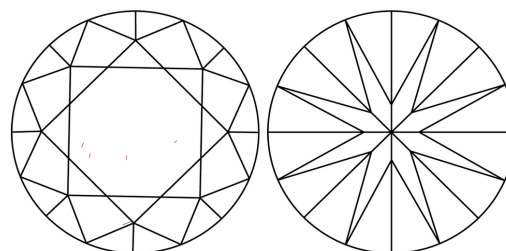
Pressure High Temperature (HPHT) growth process.

Type II

PROPORTIONS



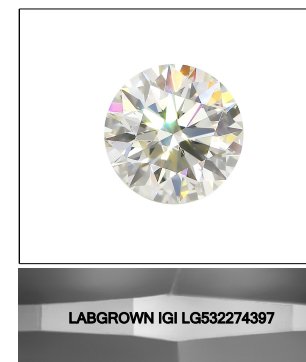
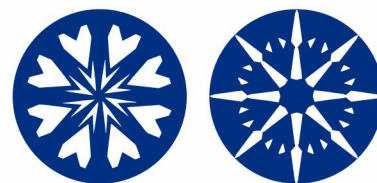
CLARITY CHARACTERISTICS



KEY TO SYMBOLS

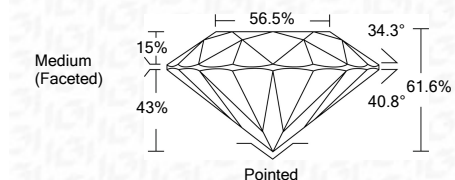
Red symbols indicate internal characteristics.

Green symbols indicate external characteristics.



LASERSCRIBESM

Sample Image Used



ADDITIONAL GRADING INFORMATION

Polish

EXCELLENT

Symmetry

EXCELLENT

Fluorescence

NONE

Inscription(s)

LABGROWN IGI LG532274397

Comments: HEARTS & ARROWS

As Grown - No indication of post-growth treatment.

This Laboratory Grown Diamond was created by High

Pressure High Temperature (HPHT) growth process.

Type II



IGI

June 10, 2022

IGI Report No. LG532274397

ROUND BRILLIANT

6.51 - 6.54 X 4.02 MM

Carat Weight **1.05 CARAT**

Color Grade **D**

Clarity Grade **VS 1**

Cut Grade **IDEAL**

Depth **61.6%**

Table **56.5%**

Girdle **Medium (Faceted)**

Culet **Pointed**

Polish **EXCELLENT**

Symmetry **EXCELLENT**

Fluorescence **NONE**

Inscription(s) **LABGROWN IGI LG532274397**

Comments:

HEARTS & ARROWS

As Grown - No indication of post-growth

treatment.

This Laboratory Grown Diamond was created

by High Pressure High Temperature (HPHT)

growth process.

Type II