



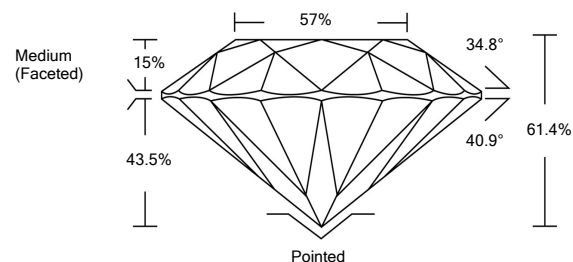
ELECTRONIC COPY

LG532274477

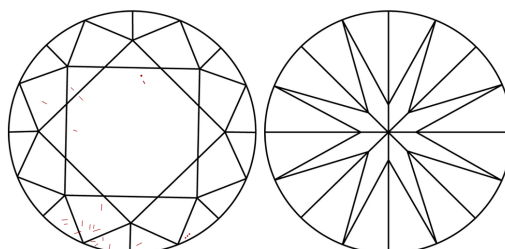
GRADING SCALES

Table with 2 main sections: COLOR GRADING SCALE and CLARITY (10x) GRADING SCALE. Includes categories like CL, NC, FT, VLT, LT and FL, IF, VVS, VS, SI, I.

PROPORTIONS

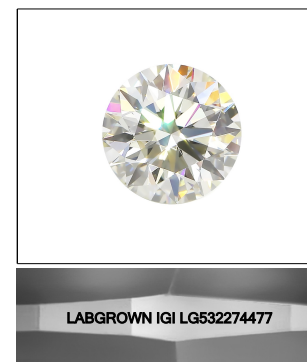


CLARITY CHARACTERISTICS



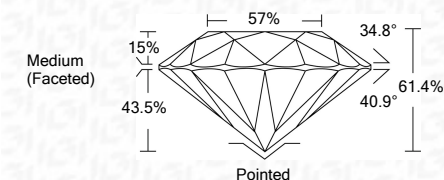
KEY TO SYMBOLS

Red symbols indicate internal characteristics. Green symbols indicate external characteristics.



LASERSCRIBESM Sample Image Used

June 9, 2022
IGI Report Number: LG532274477
Description: LABORATORY GROWN DIAMOND
Shape and Cutting Style: ROUND BRILLIANT
Measurements: 6.74 - 6.79 X 4.16 MM
GRADING RESULTS
Carat Weight: 1.16 CARAT
Color Grade: D
Clarity Grade: VS 1
Cut Grade: IDEAL



ADDITIONAL GRADING INFORMATION
Polish: EXCELLENT
Symmetry: EXCELLENT
Fluorescence: NONE
Inscription(s): LABGROWN IGI LG532274477
Comments: As Grown - No indication of post-growth treatment. This Laboratory Grown Diamond was created by High Pressure High Temperature (HPHT) growth process. Type II



June 9, 2022
IGI Report No. LG532274477
ROUND BRILLIANT
6.74 - 6.79 X 4.16 MM
1.16 CARAT
D
VS 1
IDEAL
61.4%
57%
Medium (Faceted)
Pointed
EXCELLENT
EXCELLENT
NONE
LABGROWN IGI LG532274477
As Grown - No indication of post-growth treatment. This Laboratory Grown Diamond was created by High Pressure High Temperature (HPHT) growth process. Type II

