



ELECTRONIC COPY

LABORATORY GROWN DIAMOND REPORT

June 8, 2022
 IGI Report Number **LG532275007**
 Description **LABORATORY GROWN
DIAMOND**
 Shape and Cutting Style **ROUND BRILLIANT**
 Measurements **6.68 - 6.73 X 4.02 MM**

GRADING RESULTS

Carat Weight **1.10 CARAT**
 Color Grade **D**
 Clarity Grade **VS 2**
 Cut Grade **IDEAL**

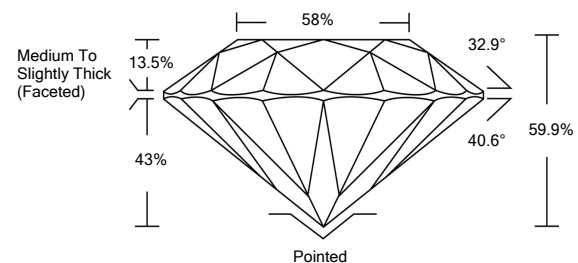
ADDITIONAL GRADING INFORMATION

Polish **EXCELLENT**
 Symmetry **EXCELLENT**
 Fluorescence **NONE**
 Inscription(s) **LABGROWN IGI LG532275007**

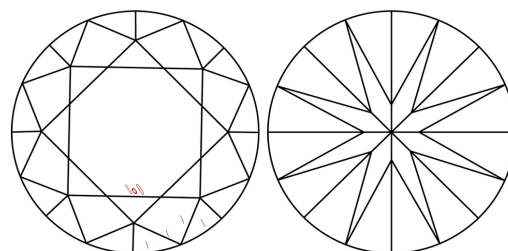
Comments: As Grown - No indication of post-growth treatment. This Laboratory Grown Diamond was created by High Pressure High Temperature (HPHT) growth process. Type II

LG532275007

PROPORTIONS



CLARITY CHARACTERISTICS

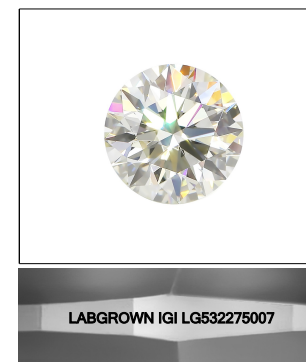


KEY TO SYMBOLS

Red symbols indicate internal characteristics.
 Green symbols indicate external characteristics.

GRADING SCALES

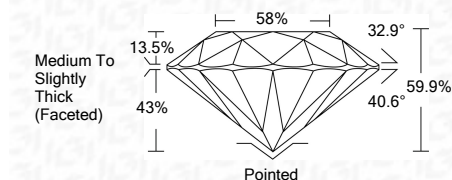
COLOR GRADING SCALE	CL	NC	FT	VL	LT	
	COLORLESS D-F	NEAR COLORLESS G-J	FAINT K-M	VERY LIGHT N-R	LIGHT S-Z	
CLARITY (10x) GRADING SCALE	FL	IF	VVS	VS	SI	I
	FLAWLESS INTERNALLY FLAWLESS	VERY VERY SLIGHTLY INCLUDED	VERY SLIGHTLY INCLUDED	SLIGHTLY INCLUDED	INCLUDED	



LASERSCRIBESM

Sample Image Used

June 8, 2022
 IGI Report Number **LG532275007**
 Description **LABORATORY GROWN
DIAMOND**
 Shape and Cutting Style **ROUND BRILLIANT**
 Measurements **6.68 - 6.73 X 4.02 MM**
GRADING RESULTS
 Carat Weight **1.10 CARAT**
 Color Grade **D**
 Clarity Grade **VS 2**
 Cut Grade **IDEAL**



ADDITIONAL GRADING INFORMATION

Polish **EXCELLENT**
 Symmetry **EXCELLENT**
 Fluorescence **NONE**
 Inscription(s) **LABGROWN IGI LG532275007**
 Comments: As Grown - No indication of post-growth treatment. This Laboratory Grown Diamond was created by High Pressure High Temperature (HPHT) growth process. Type II



IGI



June 8, 2022	IGI Report No. LG532275007	1.10 CARAT	D	Pointed	EXCELLENT	EXCELLENT	LABGROWN IGI LG532275007	As Grown - No indication of post-growth treatment. This Laboratory Grown Diamond was created by High Pressure High Temperature (HPHT) growth process. Type II
ROUND BRILLIANT	6.68 - 6.73 X 4.02 MM	VS 2	IDEAL	58%	32.9°	40.6°	NONE	
Carat Weight	6.68 - 6.73 X 4.02 MM	VS 2	IDEAL	58%	32.9°	40.6°	NONE	
Color Grade	6.68 - 6.73 X 4.02 MM	VS 2	IDEAL	58%	32.9°	40.6°	NONE	
Clarity Grade	6.68 - 6.73 X 4.02 MM	VS 2	IDEAL	58%	32.9°	40.6°	NONE	
Cut Grade	6.68 - 6.73 X 4.02 MM	VS 2	IDEAL	58%	32.9°	40.6°	NONE	
Depth	6.68 - 6.73 X 4.02 MM	VS 2	IDEAL	58%	32.9°	40.6°	NONE	
Table	6.68 - 6.73 X 4.02 MM	VS 2	IDEAL	58%	32.9°	40.6°	NONE	
Girdle	6.68 - 6.73 X 4.02 MM	VS 2	IDEAL	58%	32.9°	40.6°	NONE	
Culet	6.68 - 6.73 X 4.02 MM	VS 2	IDEAL	58%	32.9°	40.6°	NONE	