



ELECTRONIC COPY

LABORATORY GROWN DIAMOND REPORT

July 21, 2022
 IGI Report Number **LG533209320**
 Description **LABORATORY GROWN
DIAMOND**
 Shape and Cutting Style **CUT CORNERED RECTANGULAR
MODIFIED BRILLIANT**
 Measurements **9.77 X 7.43 X 4.92 MM**

GRADING RESULTS

Carat Weight **3.07 CARATS**
 Color Grade **H**
 Clarity Grade **SI 1**

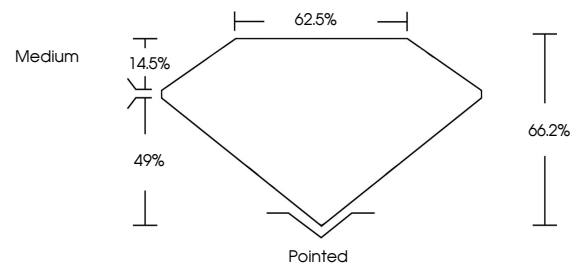
ADDITIONAL GRADING INFORMATION

Polish **EXCELLENT**
 Symmetry **EXCELLENT**
 Fluorescence **NONE**
 Inscription(s) **LABGROWN IGI LG533209320**

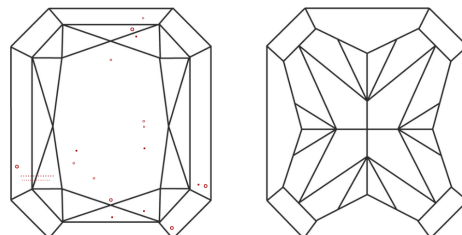
Comments: This Laboratory Grown Diamond was created by Chemical Vapor Deposition (CVD) growth process and may include post-growth treatment. Type IIa

LG533209320

PROPORTIONS



CLARITY CHARACTERISTICS



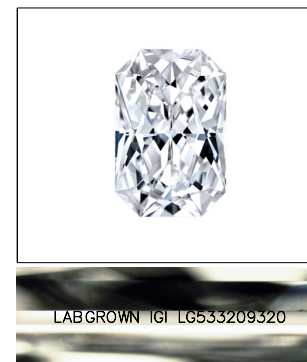
KEY TO SYMBOLS

Red symbols indicate internal characteristics.
 Green symbols indicate external characteristics.

**LABORATORY GROWN
DIAMOND REPORT**

GRADING SCALES

COLOR GRADING SCALE	CL	NC	FT	VL	LT	
	COLORLESS D-F	NEAR COLORLESS G-J	FAINT K-M	VERY LIGHT N-R	LIGHT S-Z	
CLARITY (10x) GRADING SCALE	FL	IF	VVS	VS	SI	I
	FLAWLESS INTERNALLY FLAWLESS	VERY VERY SLIGHTLY INCLUDED	VERY SLIGHTLY INCLUDED	SLIGHTLY INCLUDED	INCLUDED	



LASERSCRIBESM

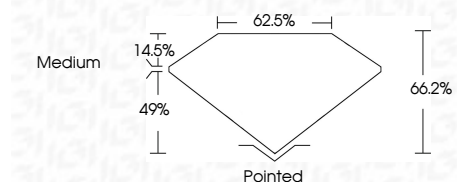
Sample Image Used

LABORATORY GROWN DIAMOND REPORT

July 21, 2022
 IGI Report Number **LG533209320**
 Description **LABORATORY GROWN
DIAMOND**
 Shape and Cutting Style **CUT CORNERED
RECTANGULAR MODIFIED
BRILLIANT**
 Measurements **9.77 X 7.43 X 4.92 MM**

GRADING RESULTS

Carat Weight **3.07 CARATS**
 Color Grade **H**
 Clarity Grade **SI 1**



ADDITIONAL GRADING INFORMATION

Polish **EXCELLENT**
 Symmetry **EXCELLENT**
 Fluorescence **NONE**
 Inscription(s) **LABGROWN IGI LG533209320**

Comments: This Laboratory Grown Diamond was created by Chemical Vapor Deposition (CVD) growth process and may include post-growth treatment. Type IIa



IGI



July 21, 2022	IGI Report No LG533209320	3.07 CARATS	H	SI 1	Pointed	EXCELLENT	EXCELLENT	NONE	LABGROWN IGI LG533209320	The Laboratory Grown Diamond was created by Chemical Vapor Deposition (CVD) growth process and may include post-growth treatment. Type IIa
CUT CORNERED RECT. MODIFIED	9.77 X 7.43 X 4.92 MM	Color Grade	Depth	Table	Grade	Culet	Polish	Symmetry	Fluorescence	