



**ELECTRONIC COPY**

**LABORATORY GROWN DIAMOND REPORT**

June 15, 2022  
 IGI Report Number **LG533218093**  
 Description **LABORATORY GROWN  
DIAMOND**  
 Shape and Cutting Style **OVAL BRILLIANT**  
 Measurements **9.01 X 6.52 X 4.04 MM**

**GRADING RESULTS**

Carat Weight **1.51 CARAT**  
 Color Grade **F**  
 Clarity Grade **SI 1**

**ADDITIONAL GRADING INFORMATION**

Polish **EXCELLENT**  
 Symmetry **EXCELLENT**  
 Fluorescence **NONE**

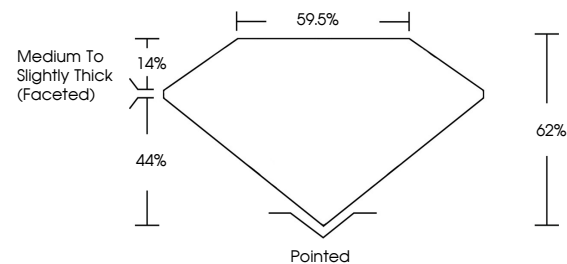
Inscription(s) **LABGROWN IGI LG533218093**

Comments: As Grown - No indication of post-growth treatment.

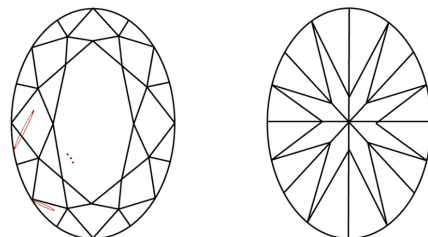
This Laboratory Grown Diamond was created by High Pressure High Temperature (HPHT) growth process. Type II

LG533218093

**PROPORTIONS**



**CLARITY CHARACTERISTICS**

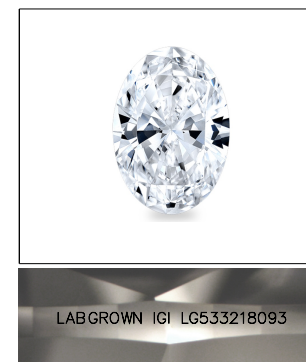


**KEY TO SYMBOLS**

Red symbols indicate internal characteristics.  
 Green symbols indicate external characteristics.

**GRADING SCALES**

COLOR GRADING SCALE	CL	NC	FT	VLT	LT	
	COLORLESS D-F	NEAR COLORLESS G-J	FAINT K-M	VERY LIGHT N-R	LIGHT S-Z	
CLARITY (10x) GRADING SCALE	FL	IF	VVS	VS	SI	I
	FLAWLESS INTERNALLY FLAWLESS	VERY VERY SLIGHTLY INCLUDED	VERY SLIGHTLY INCLUDED	SLIGHTLY INCLUDED	INCLUDED	

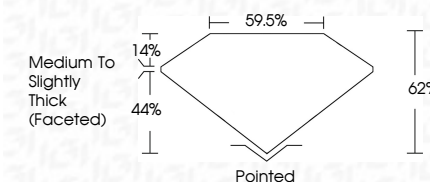


LABGROWN IGI LG533218093

**LASERSCRIBE<sup>SM</sup>**

Sample Image Used

June 15, 2022  
 IGI Report Number **LG533218093**  
 Description **LABORATORY GROWN  
DIAMOND**  
 Shape and Cutting Style **OVAL BRILLIANT**  
 Measurements **9.01 X 6.52 X 4.04 MM**  
**GRADING RESULTS**  
 Carat Weight **1.51 CARAT**  
 Color Grade **F**  
 Clarity Grade **SI 1**



**ADDITIONAL GRADING INFORMATION**

Polish **EXCELLENT**  
 Symmetry **EXCELLENT**  
 Fluorescence **NONE**

Inscription(s) **LABGROWN IGI LG533218093**

Comments: As Grown - No indication of post-growth treatment. This Laboratory Grown Diamond was created by High Pressure High Temperature (HPHT) growth process. Type II



**IGI**

June 15, 2022	IGI Report No LG533218093	1.51 CARAT	F
OVAL BRILLIANT	9.01 X 6.52 X 4.04 MM	SI 1	62%
Carat Weight	Color Grade	Medium To Slightly Thick (Faceted)	59.5%
Carat Weight	Color Grade	Pointed	EXCELLENT
Clarity Grade	Depth	Symmetry	EXCELLENT
Table	Table	Fluorescence	NONE
Grade	Grade	Inscription(s)	LABGROWN IGI LG533218093
Culet	Polish	Comments:	As Grown - No indication of post-growth treatment. This Laboratory Grown Diamond was created by High Pressure High Temperature (HPHT) growth process. Type II
Symmetry	Symmetry		
Fluorescence	Fluorescence		
Inscription(s)	Inscription(s)		
Comments:	Comments:		