



**INTERNATIONAL
GEMOLOGICAL
INSTITUTE**

ELECTRONIC COPY

**LABORATORY GROWN
DIAMOND REPORT**

**IGI LABORATORY GROWN
DIAMOND ID REPORT**

June 22, 2022
IGI Report Number **LG533221589**

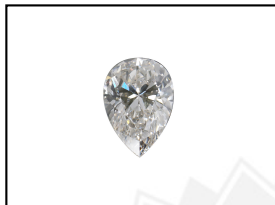
LABORATORY GROWN DIAMOND REPORT

LG533221589

PEAR BRILLIANT
7.71 X 4.61 X 2.94 MM
Carat Weight 0.63 CARAT
Color Grade G
Clarity Grade VS 1
Polish VERY GOOD
Symmetry VERY GOOD
Fluorescence NONE
Inscription(s) LABGROWN IGI
LG533221589

IGI LABORATORY GROWN DIAMOND IDENTIFICATION REPORT

June 22, 2022
IGI Report Number LG533221589
Description LABORATORY GROWN DIAMOND
Shape and Cutting Style PEAR BRILLIANT
Measurements 7.71 X 4.61 X 2.94 MM



Comments: This Laboratory Grown Diamond was created by Chemical Vapor Deposition (CVD) growth process and may include post-growth treatment. Type IIa

GRADING RESULTS

Carat Weight 0.63 CARAT
Color Grade G
Clarity Grade VS 1



ADDITIONAL GRADING INFORMATION

Polish VERY GOOD
Symmetry VERY GOOD
Fluorescence NONE
Inscription(s) LABGROWN IGI LG533221589

LASERSCRIBESM
Sample Images Used



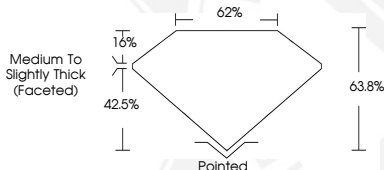
Comments: This Laboratory Grown Diamond was created by Chemical Vapor Deposition (CVD) growth process and may include post-growth treatment. Type IIa

**IGI LABORATORY GROWN
DIAMOND ID REPORT**

June 22, 2022
IGI Report Number **LG533221589**

PEAR BRILLIANT
7.71 X 4.61 X 2.94 MM
Carat Weight 0.63 CARAT
Color Grade G
Clarity Grade VS 1
Polish VERY GOOD
Symmetry VERY GOOD
Fluorescence NONE
Inscription(s) LABGROWN IGI
LG533221589

Comments: This Laboratory Grown Diamond was created by Chemical Vapor Deposition (CVD) growth process and may include post-growth treatment. Type IIa



THIS DOCUMENT WAS PRODUCED WITH THE FOLLOWING SECURITY MEASURES: SPECIAL DOCUMENT PAPER, INK SCREENS, WATERMARK, BACKGROUND DESIGN, HOLOGRAM AND OTHER SECURITY FEATURES NOT LISTED AND DO EXCEED DOCUMENT SECURITY INDUSTRY GUIDELINES.

For terms & conditions and to verify this report, please visit www.igi.org