



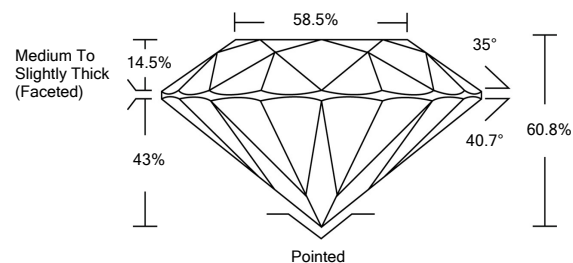
ELECTRONIC COPY

LG533283717

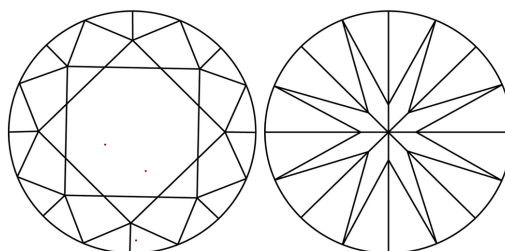
GRADING SCALES

COLOR GRADING SCALE	CL	NC	FT	VLT	LT	
	COLORLESS D-F	NEAR COLORLESS G-J	FAINT K-M	VERY LIGHT N-R	LIGHT S-Z	
CLARITY (10x) GRADING SCALE	FL	IF	VVS	VS	SI	I
	FLAWLESS INTERNALLY FLAWLESS	VERY VERY SLIGHTLY INCLUDED	VERY SLIGHTLY INCLUDED	SLIGHTLY INCLUDED	INCLUDED	

PROPORTIONS

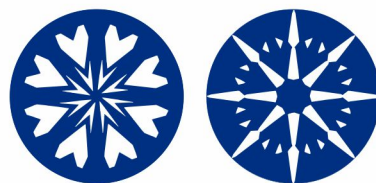


CLARITY CHARACTERISTICS

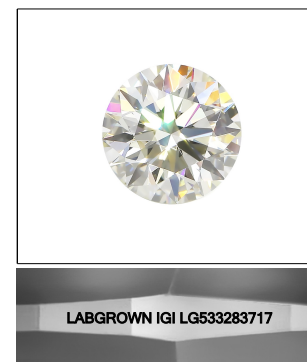


KEY TO SYMBOLS

Red symbols indicate internal characteristics. Green symbols indicate external characteristics.



www.igi.org



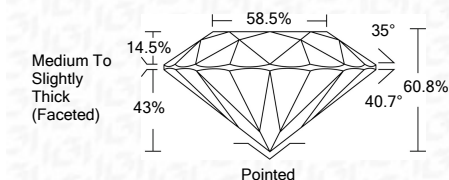
LASERSCRIBE<sup>SM</sup> Sample Image Used

June 9, 2022

IGI Report Number: LG533283717  
Description: LABORATORY GROWN DIAMOND  
Shape and Cutting Style: ROUND BRILLIANT  
Measurements: 6.67 - 6.74 X 4.07 MM

GRADING RESULTS

Carat Weight: 1.13 CARAT  
Color Grade: F  
Clarity Grade: VVS 2  
Cut Grade: IDEAL



ADDITIONAL GRADING INFORMATION

Polish: EXCELLENT  
Symmetry: EXCELLENT  
Fluorescence: NONE

Inscription(s): LABGROWN IGI LG533283717

Comments: HEARTS & ARROWS  
This Laboratory Grown Diamond was created by Chemical Vapor Deposition (CVD) growth process and may include post-growth treatment. Type IIa



IGI

IGI Report No. LG533283717	1.13 CARAT	F	VVS 2	IDEAL	60.8%	58.5%	Medium To Slightly Thick (Faceted)	Pointed	EXCELLENT	EXCELLENT	NONE	LABGROWN IGI LG533283717
ROUND BRILLIANT	6.67 - 6.74 X 4.07 MM											
Color Grade	Clarity Grade	Cut Grade	Depth	Table	Girdle	Culet	Polish	Symmetry	Fluorescence	Inscriptions(s)	Comments:	HEARTS & ARROWS This Laboratory Grown Diamond was created by Chemical Vapor Deposition (CVD) growth process and may include post-growth treatment. Type IIa

