



**ELECTRONIC COPY**

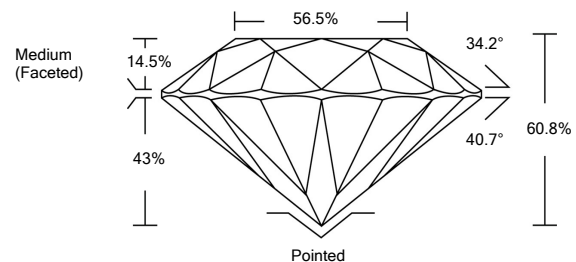
LG533284990

**LABORATORY GROWN DIAMOND REPORT**

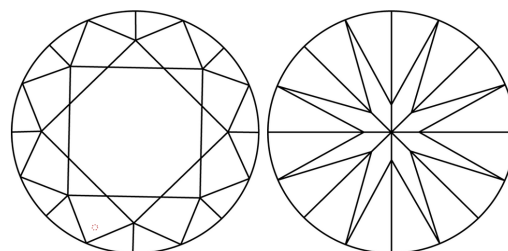
**GRADING SCALES**

COLOR GRADING SCALE	CL	NC	FT	VL	LT	
	COLORLESS D-F	NEAR COLORLESS G-J	FAINT K-M	VERY LIGHT N-R	LIGHT S-Z	
CLARITY (10x) GRADING SCALE	FL	IF	VVS	VS	SI	I
	FLAWLESS INTERNALLY FLAWLESS	VERY VERY SLIGHTLY INCLUDED	VERY SLIGHTLY INCLUDED	SLIGHTLY INCLUDED	INCLUDED	

**PROPORTIONS**

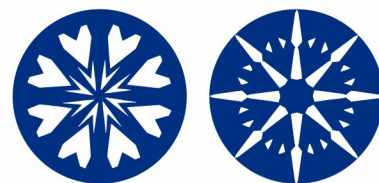


**CLARITY CHARACTERISTICS**



**KEY TO SYMBOLS**

Red symbols indicate internal characteristics.  
Green symbols indicate external characteristics.



www.igi.org

June 9, 2022

IGI Report Number **LG533284990**

Description **LABORATORY GROWN DIAMOND**

Shape and Cutting Style **ROUND BRILLIANT**

Measurements **6.71 - 6.74 X 4.09 MM**

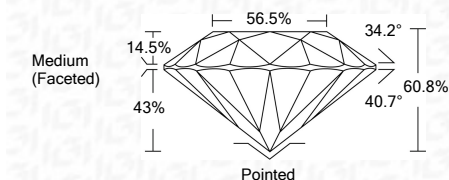
**GRADING RESULTS**

Carat Weight **1.13 CARAT**

Color Grade **D**

Clarity Grade **VVS 2**

Cut Grade **IDEAL**



**ADDITIONAL GRADING INFORMATION**

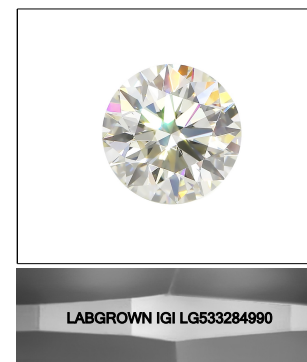
Polish **EXCELLENT**

Symmetry **EXCELLENT**

Fluorescence **NONE**

Inscription(s) **LABGROWN IGI LG533284990**

Comments: HEARTS & ARROWS  
As Grown - No indication of post-growth treatment.  
This Laboratory Grown Diamond was created by High Pressure High Temperature (HPHT) growth process.  
Type II



**LASERSCRIBE<sup>SM</sup>**  
Sample Image Used



© IGI 2020, International Gemological Institute

FD - 10 20

THIS DOCUMENT WAS PRODUCED WITH THE FOLLOWING SECURITY MEASURES: SPECIAL DOCUMENT PAPER, INK SCREENS, WATERMARK BACKGROUND DESIGNS, HOLOGRAM AND OTHER SECURITY FEATURES NOT LISTED AND DO EXCEED DOCUMENT SECURITY INDUSTRY GUIDELINES.



**IGI**

IGI Report No. LG533284990	1.13 CARAT	D	Pointed
ROUND BRILLIANT	VVS 2	EXCELLENT	EXCELLENT
6.71 - 6.74 X 4.09 MM	IDEAL	EXCELLENT	EXCELLENT
Carat Weight	60.8%	NONE	NONE
Color Grade	56.5%	LABGROWN IGI	LABGROWN IGI
Clarity Grade	Medium (Faceted)	LG533284990	LG533284990
Cut Grade			
Depth			
Table			
Girdle			
Culet			
Polish			
Symmetry			
Fluorescence			
Inscriptions(s)			
Comments:			
HEARTS & ARROWS			
As Grown - No indication of post-growth treatment.			
This Laboratory Grown Diamond was created by High Pressure High Temperature (HPHT) growth process.			
Type II			