



**ELECTRONIC COPY**

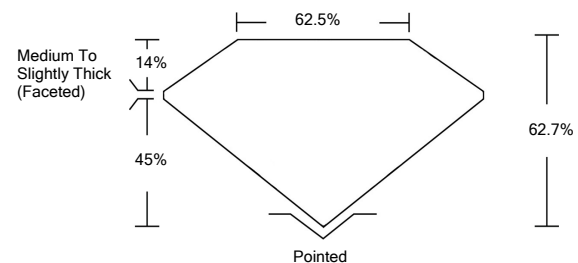
**LABORATORY GROWN DIAMOND REPORT**

LG533286893

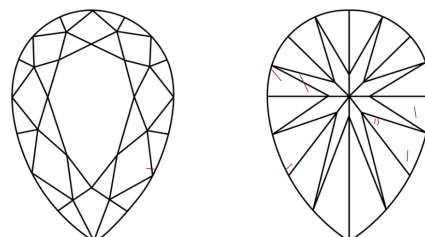
**GRADING SCALES**

| COLOR GRADING SCALE         | CL                           | NC                          | FT                     | VLT               | LT        |   |
|-----------------------------|------------------------------|-----------------------------|------------------------|-------------------|-----------|---|
|                             | COLORLESS D-F                | NEAR COLORLESS G-J          | FAINT K-M              | VERY LIGHT N-R    | LIGHT S-Z |   |
| CLARITY (10x) GRADING SCALE | FL                           | IF                          | VVS                    | VS                | SI        | I |
|                             | FLAWLESS INTERNALLY FLAWLESS | VERY VERY SLIGHTLY INCLUDED | VERY SLIGHTLY INCLUDED | SLIGHTLY INCLUDED | INCLUDED  |   |

**PROPORTIONS**

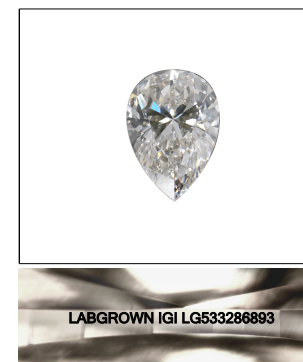


**CLARITY CHARACTERISTICS**



**KEY TO SYMBOLS**

Red symbols indicate internal characteristics.  
Green symbols indicate external characteristics.



**LASERSCRIBE<sup>SM</sup>**  
Sample Image Used

June 14, 2022

IGI Report Number

**LG533286893**

Description

**LABORATORY GROWN  
DIAMOND**

Shape and Cutting Style

**PEAR BRILLIANT**

Measurements

**8.55 X 5.69 X 3.57 MM**

**GRADING RESULTS**

Carat Weight

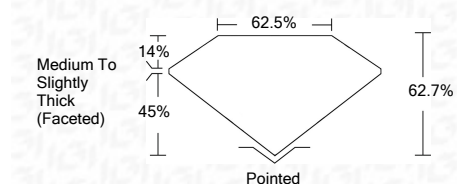
**1.01 CARAT**

Color Grade

**I**

Clarity Grade

**SI 1**



**ADDITIONAL GRADING INFORMATION**

Polish

**EXCELLENT**

Symmetry

**EXCELLENT**

Fluorescence

**NONE**

Inscription(s)

**LABGROWN IGI LG533286893**

Comments: This Laboratory Grown Diamond was created by Chemical Vapor Deposition (CVD) growth process and may include post-growth treatment.  
Type IIa

June 14, 2022

IGI Report Number

**LG533286893**

Description

**LABORATORY GROWN  
DIAMOND**

Shape and Cutting Style

**PEAR BRILLIANT**

Measurements

**8.55 X 5.69 X 3.57 MM**

**GRADING RESULTS**

Carat Weight

**1.01 CARAT**

Color Grade

**I**

Clarity Grade

**SI 1**

**ADDITIONAL GRADING INFORMATION**

Polish

**EXCELLENT**

Symmetry

**EXCELLENT**

Fluorescence

**NONE**

Inscription(s)

**LABGROWN IGI LG533286893**

Comments: This Laboratory Grown Diamond was created by Chemical Vapor Deposition (CVD) growth process and may include post-growth treatment.  
Type IIa



**IGI**

|                |                                    |            |       |                          |
|----------------|------------------------------------|------------|-------|--------------------------|
| June 14, 2022  | IGI Report No. LG533286893         | 1.01 CARAT | I     | Pointed                  |
| PEAR BRILLIANT | 8.55 X 5.69 X 3.57 MM              | 1.01 CARAT | SI 1  | EXCELLENT                |
| Color Grade    | 8.55 X 5.69 X 3.57 MM              | 1.01 CARAT | 62.7% | EXCELLENT                |
| Clarity Grade  | Medium To Slightly Thick (Faceted) | 1.01 CARAT | 62.5% | NONE                     |
| Depth          | Medium To Slightly Thick (Faceted) | 1.01 CARAT | 62.5% | LABGROWN IGI LG533286893 |
| Table          | Medium To Slightly Thick (Faceted) | 1.01 CARAT | 62.5% |                          |
| Grade          | Medium To Slightly Thick (Faceted) | 1.01 CARAT | 62.5% |                          |
| Culet          | Medium To Slightly Thick (Faceted) | 1.01 CARAT | 62.5% |                          |
| Polish         | Medium To Slightly Thick (Faceted) | 1.01 CARAT | 62.5% |                          |
| Symmetry       | Medium To Slightly Thick (Faceted) | 1.01 CARAT | 62.5% |                          |
| Fluorescence   | Medium To Slightly Thick (Faceted) | 1.01 CARAT | 62.5% |                          |
| Inscription(s) | Medium To Slightly Thick (Faceted) | 1.01 CARAT | 62.5% |                          |
| Comments:      | Medium To Slightly Thick (Faceted) | 1.01 CARAT | 62.5% |                          |

This Laboratory Grown Diamond was created by Chemical Vapor Deposition (CVD) growth process and may include post-growth treatment.  
Type IIa