



**INTERNATIONAL
GEMOLOGICAL
INSTITUTE**

LABORATORY GROWN DIAMOND REPORT

IGI LABORATORY GROWN DIAMOND IDENTIFICATION REPORT

June 15, 2022
 IGI Report Number LG534223075
 Description LABORATORY GROWN DIAMOND
 Shape and Cutting Style ROUND BRILLIANT
 Measurements 4.96 - 5.02 X 3.22 MM

GRADING RESULTS

Carat Weight 0.50 CARAT
 Color Grade D
 Clarity Grade VVS 2
 Cut Grade VERY GOOD

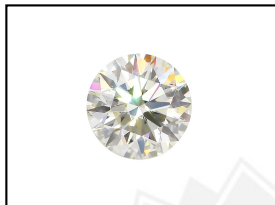
ADDITIONAL GRADING INFORMATION

Polish EXCELLENT
 Symmetry EXCELLENT
 Fluorescence NONE
 Inscription(s) LABGROWN IGI LG534223075

Comments: As Grown - No indication of post-growth treatment.
 This Laboratory Grown Diamond was created by High Pressure High Temperature (HPHT) growth process.
 Type II

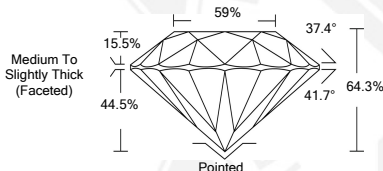
**ELECTRONIC COPY LABORATORY GROWN
DIAMOND REPORT**

LG534223075



LABGROWN IGI LG534223075

LASERSCRIBESM
Sample Images Used



**IGI LABORATORY GROWN
DIAMOND ID REPORT**

June 15, 2022
 IGI Report Number **LG534223075**
ROUND BRILLIANT
4.96 - 5.02 X 3.22 MM
 Carat Weight 0.50 CARAT
 Color Grade D
 Clarity Grade VVS 2
 Cut Grade VERY GOOD
 Polish EXCELLENT
 Symmetry EXCELLENT
 Fluorescence NONE
 Inscription(s) LABGROWN IGI
 LG534223075

Comments: As Grown - No indication of post-growth treatment.
 This Laboratory Grown Diamond was created by High Pressure High Temperature (HPHT) growth process.
 Type II

**IGI LABORATORY GROWN
DIAMOND ID REPORT**

June 15, 2022
 IGI Report Number **LG534223075**
ROUND BRILLIANT
4.96 - 5.02 X 3.22 MM
 Carat Weight 0.50 CARAT
 Color Grade D
 Clarity Grade VVS 2
 Cut Grade VERY GOOD
 Polish EXCELLENT
 Symmetry EXCELLENT
 Fluorescence NONE
 Inscription(s) LABGROWN IGI
 LG534223075

Comments: As Grown - No indication of post-growth treatment.
 This Laboratory Grown Diamond was created by High Pressure High Temperature (HPHT) growth process.
 Type II

THIS DOCUMENT WAS PRODUCED WITH THE FOLLOWING SECURITY MEASURES: SPECIAL DOCUMENT PAPER, INK SCREENS, WATERMARK, BACKGROUND DESIGN, HOLOGRAM AND OTHER SECURITY FEATURES NOT LISTED AND DO EXCEED DOCUMENT SECURITY INDUSTRY GUIDELINES.

For terms & conditions and to verify this report, please visit www.igi.org