

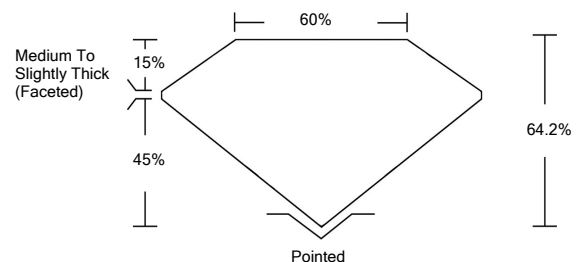


ELECTRONIC COPY

LABORATORY GROWN DIAMOND REPORT

LG534224448

PROPORTIONS



GRADING SCALES

COLOR GRADING SCALE	CL	NC	FT	VLT	LT	
	COLORLESS D-F	NEAR COLORLESS G-J	FAINT K-M	VERY LIGHT N-R	LIGHT S-Z	
CLARITY (10x) GRADING SCALE	FL	IF	VVS	VS	SI	I
	FLAWLESS INTERNALLY FLAWLESS	VERY VERY SLIGHTLY INCLUDED	VERY SLIGHTLY INCLUDED	SLIGHTLY INCLUDED	INCLUDED	

June 21, 2022

IGI Report Number

LG534224448

Description

**LABORATORY GROWN
DIAMOND**

Shape and Cutting Style

PEAR BRILLIANT

Measurements

10.87 X 6.90 X 4.43 MM

GRADING RESULTS

Carat Weight

2.01 CARATS

Color Grade

F

Clarity Grade

VS 2

June 21, 2022

IGI Report Number

LG534224448

Description

**LABORATORY GROWN
DIAMOND**

Shape and Cutting Style

PEAR BRILLIANT

Measurements

10.87 X 6.90 X 4.43 MM

GRADING RESULTS

Carat Weight

2.01 CARATS

Color Grade

F

Clarity Grade

VS 2

ADDITIONAL GRADING INFORMATION

Polish

EXCELLENT

Symmetry

EXCELLENT

Fluorescence

NONE

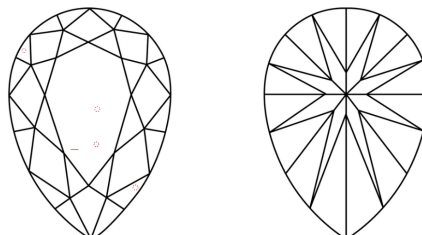
Inscription(s)

LABGROWN IGI LG534224448

Comments: This Laboratory Grown Diamond was created by Chemical Vapor Deposition (CVD) growth process and may include post-growth treatment.

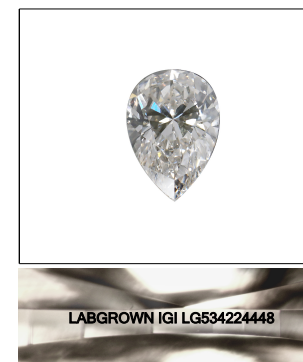
Type IIa

CLARITY CHARACTERISTICS

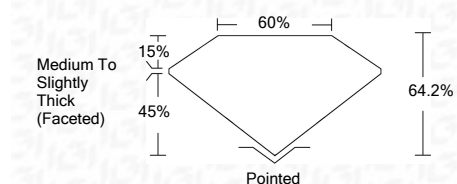


KEY TO SYMBOLS

Red symbols indicate internal characteristics.
Green symbols indicate external characteristics.



LASERSCRIBESM
Sample Image Used



ADDITIONAL GRADING INFORMATION

Polish

EXCELLENT

Symmetry

EXCELLENT

Fluorescence

NONE

Inscription(s)

LABGROWN IGI LG534224448

Comments: This Laboratory Grown Diamond was created by Chemical Vapor Deposition (CVD) growth process and may include post-growth treatment.

Type IIa



IGI

IGI Report No. LG534224448	PEAR BRILLIANT	2.01 CARATS	F
10.87 X 6.90 X 4.43 MM		VS 2	64.2%
Carat Weight		60%	Medium To Slightly Thick (Faceted)
Color Grade		Pointed	EXCELLENT
Clarity Grade		EXCELLENT	EXCELLENT
Depth		NONE	NONE
Table		LABGROWN IGI	LG534224448
Girdle		Comments:	This Laboratory Grown Diamond was created by Chemical Vapor Deposition (CVD) growth process and may include post-growth treatment. Type IIa