



**ELECTRONIC COPY**

## LABORATORY GROWN DIAMOND REPORT

July 12, 2022

IGI Report Number **LG534233213**

Description	LABORATORY GROWN DIAMOND
-------------	-----------------------------

Shape and Cutting Style **OVAL BRILLIANT**

Measurements 9.46 X 6.72 X 4.21 MM

## GRADING RESULTS

Carat Weight 1.65 CARAT

Color Grade F

Clarity Grade WS 1

### ADDITIONAL GRADING INFORMATION

Polish **EXCELLENT**

Symmetry **VERY GOOD**

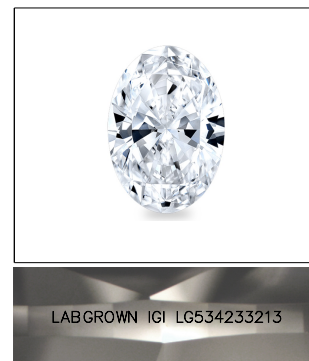
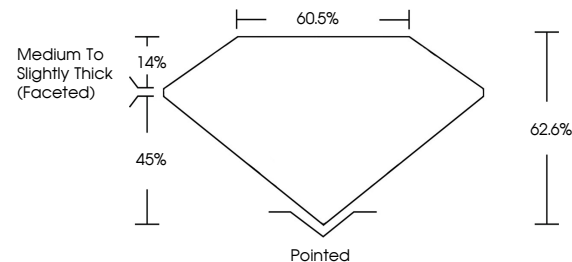
Fluorescence **NONE**

Inscription(s) LABGROWN IGI LG534233213

Comments: This Laboratory Grown Diamond was created by Chemical Vapor Deposition (CVD) growth process and may include post-growth treatment.  
Type IIa

LG534233213

## PROPORTIONS

LASERSCRIBE<sup>SM</sup>

Sample Image Used



© IGI 2020, International Gemological Institute

FD - 10 20



THIS DOCUMENT WAS PRODUCED WITH THE FOLLOWING SECURITY MEASURES: SPECIAL DOCUMENT PAPER, INK SCREENS, WATERMARK BACKGROUND DESIGNS, HOLOGRAM, AND OTHER SECURITY FEATURES NOT LISTED AND DO EXCEED DOCUMENT SECURITY INDUSTRY GUIDELINES

LABORATORY GROWN  
DIAMOND REPORT

## GRADING SCALES

COLOR GRADING SCALE	CL		NC		FT		VLT		LT	
	COLORLESS D-F		NEAR COLORLESS G-J		FAINT K-M		VERY LIGHT N-R		LIGHT S-Z	
CLARITY (10x) GRADING SCALE	FL IF		VVS		VS		SI		I	
	FLAWLESS INTERNALLY FLAWLESS		VERY VERY SLIGHTLY INCLUDED		VERY SLIGHTLY INCLUDED		SLIGHTLY INCLUDED		INCLUDED	

LABORATORY GROWN DIAMOND REPORT

July 12, 2022	
IGI Report Number	LG534233213
Description	LABORATORY GROWN

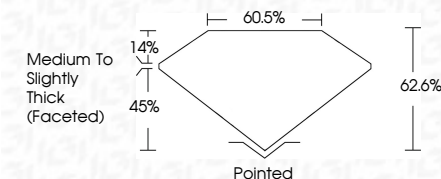
Shape and Cutting Style **OVAL BRILLIANT**

Measurements **9.46 X 6.72 X 4.21 MM**

## GRADING RESULTS

Carat Weight 1.65 CARAT

Color Grade

Clarity Grade WS 1

### ADDITIONAL GRADING INFORMATION

Polish **EXCELLENT**

Symmetry VERY GOOD

Fluorescence **NONE**

Inscription(s) LABGROWN IGI LG534233213

Comments: This Laboratory Grown Diamond was created by Chemical Vapor Deposition (CVD) growth process and may include post-growth treatment.  
Type IIa

[illegible]

**www.igi.org**