

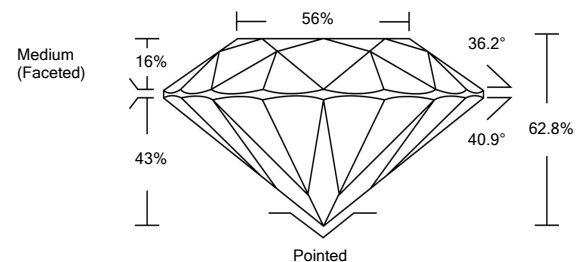


**ELECTRONIC COPY**

**LABORATORY GROWN DIAMOND REPORT**

LG534236236

**PROPORTIONS**



**GRADING SCALES**

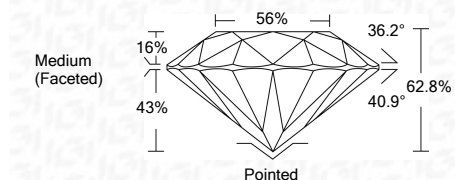
COLOR GRADING SCALE	CL	NC	FT	VL	LT	
	COLORLESS D-F	NEAR COLORLESS G-J	FAINT K-M	VERY LIGHT N-R	LIGHT S-Z	
CLARITY (10x) GRADING SCALE	FL	IF	VVS	VS	SI	I
	FLAWLESS INTERNALLY FLAWLESS	VERY VERY SLIGHTLY INCLUDED	VERY SLIGHTLY INCLUDED	SLIGHTLY INCLUDED	INCLUDED	

June 18, 2022  
 IGI Report Number **LG534236236**  
 Description **LABORATORY GROWN DIAMOND**  
 Shape and Cutting Style **ROUND BRILLIANT**  
 Measurements **10.58 - 10.62 X 6.66 MM**

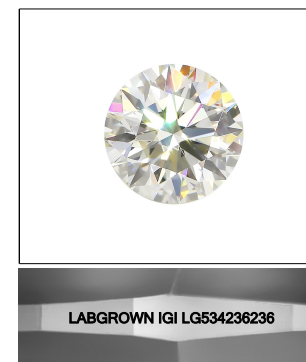
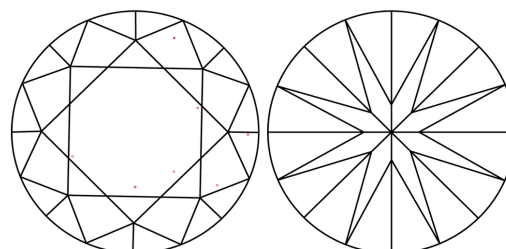
June 18, 2022  
 IGI Report Number **LG534236236**  
 Description **LABORATORY GROWN DIAMOND**  
 Shape and Cutting Style **ROUND BRILLIANT**  
 Measurements **10.58 - 10.62 X 6.66 MM**  
**GRADING RESULTS**  
 Carat Weight **4.62 CARATS**  
 Color Grade **J**  
 Clarity Grade **VS 1**  
 Cut Grade **EXCELLENT**

**GRADING RESULTS**

Carat Weight **4.62 CARATS**  
 Color Grade **J**  
 Clarity Grade **VS 1**  
 Cut Grade **EXCELLENT**



**CLARITY CHARACTERISTICS**



**LASERSCRIBE<sup>SM</sup>**  
 Sample Image Used

**ADDITIONAL GRADING INFORMATION**

Polish **EXCELLENT**  
 Symmetry **EXCELLENT**  
 Fluorescence **NONE**

**ADDITIONAL GRADING INFORMATION**  
 Polish **EXCELLENT**  
 Symmetry **EXCELLENT**  
 Fluorescence **NONE**  
 Inscription(s) **LABGROWN IGI LG534236236**  
 Comments: This Laboratory Grown Diamond was created by Chemical Vapor Deposition (CVD) growth process and may include post-growth treatment.  
 Type IIa

Inscription(s) **LABGROWN IGI LG534236236**  
 Comments: This Laboratory Grown Diamond was created by Chemical Vapor Deposition (CVD) growth process and may include post-growth treatment.  
 Type IIa

**KEY TO SYMBOLS**

Red symbols indicate internal characteristics.  
 Green symbols indicate external characteristics.



**IGI**

June 18, 2022  
 IGI Report No. **LG534236236**  
**ROUND BRILLIANT**  
 Carat Weight **4.62 CARATS**  
 Color Grade **J**  
 Clarity Grade **VS 1**  
 Depth **62.8%**  
 Table **56%**  
 Girdle **Medium (Faceted)**  
 Culet **Pointed**  
 Polish **EXCELLENT**  
 Symmetry **EXCELLENT**  
 Fluorescence **NONE**  
 Inscription(s) **LABGROWN IGI LG534236236**  
 Comments: This Laboratory Grown Diamond was created by Chemical Vapor Deposition (CVD) growth process and may include post-growth treatment.  
 Type IIa