



ELECTRONIC COPY

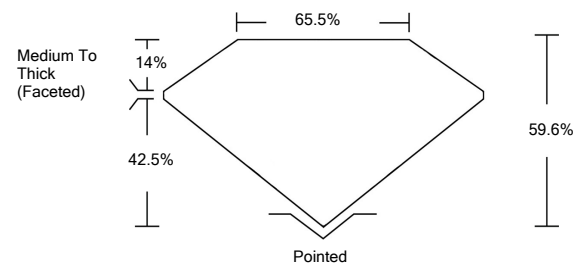
LG534237245

LABORATORY GROWN DIAMOND REPORT

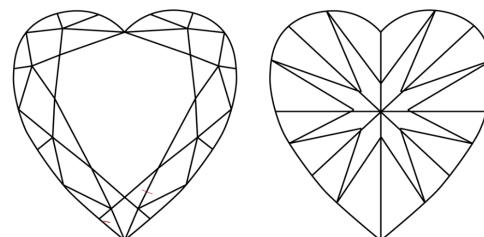
GRADING SCALES

COLOR GRADING SCALE	CL	NC	FT	VLT	LT	
	COLORLESS D-F	NEAR COLORLESS G-J	FAINT K-M	VERY LIGHT N-R	LIGHT S-Z	
CLARITY (10x) GRADING SCALE	FL	IF	VVS	VS	SI	I
	FLAWLESS INTERNALLY FLAWLESS	VERY VERY SLIGHTLY INCLUDED	VERY SLIGHTLY INCLUDED	SLIGHTLY INCLUDED	INCLUDED	

PROPORTIONS

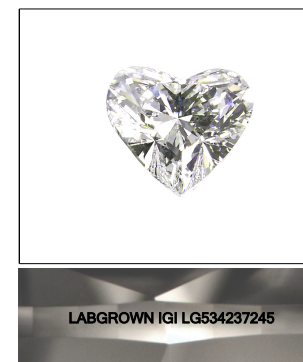


CLARITY CHARACTERISTICS



KEY TO SYMBOLS

Red symbols indicate internal characteristics.
Green symbols indicate external characteristics.



LABGROWN IGI LG534237245

LASERSCRIBESM

Sample Image Used

June 21, 2022

IGI Report Number

LG534237245

Description

LABORATORY GROWN
DIAMOND

Shape and Cutting Style

HEART BRILLIANT

Measurements

9.34 X 11.00 X 6.56 MM

GRADING RESULTS

Carat Weight

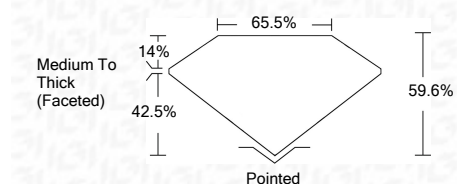
4.01 CARATS

Color Grade

G

Clarity Grade

VS 1



ADDITIONAL GRADING INFORMATION

Polish

EXCELLENT

Symmetry

EXCELLENT

Fluorescence

NONE

Inscription(s)

LABGROWN IGI LG534237245

Comments: As Grown - No indication of post-growth treatment.
This Laboratory Grown Diamond was created by High Pressure High Temperature (HPHT) growth process.
Type II

June 21, 2022

IGI Report Number

LG534237245

Description

LABORATORY GROWN
DIAMOND

Shape and Cutting Style

HEART BRILLIANT

Measurements

9.34 X 11.00 X 6.56 MM

GRADING RESULTS

Carat Weight

4.01 CARATS

Color Grade

G

Clarity Grade

VS 1

ADDITIONAL GRADING INFORMATION

Polish

EXCELLENT

Symmetry

EXCELLENT

Fluorescence

NONE

Inscription(s)

LABGROWN IGI LG534237245

Comments: As Grown - No indication of post-growth treatment.
This Laboratory Grown Diamond was created by High Pressure High Temperature (HPHT) growth process.
Type II



IGI

IGI Report No. LG534237245	HEART BRILLIANT	9.34 X 11.00 X 6.56 MM	4.01 CARATS	G	VS 1	65.5%	59.6%	14%	42.5%	Pointed	EXCELLENT	EXCELLENT	NONE	LABGROWN IGI LG534237245
June 21, 2022														

Comments: As Grown - No indication of post-growth treatment.
This Laboratory Grown Diamond was created by High Pressure High Temperature (HPHT) growth process.
Type II