



ELECTRONIC COPY

LABORATORY GROWN DIAMOND REPORT

July 1, 2022
IGI Report Number LG534239260
Description LABORATORY GROWN DIAMOND
Shape and Cutting Style HEART BRILLIANT
Measurements 7.77 X 8.60 X 5.16 MM

GRADING RESULTS

Carat Weight 2.01 CARATS
Color Grade FANCY INTENSE BROWN PINK
Clarity Grade SI 1

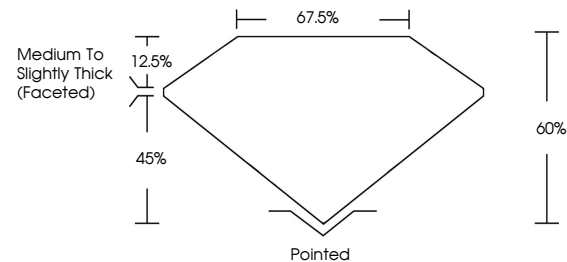
ADDITIONAL GRADING INFORMATION

Polish EXCELLENT
Symmetry EXCELLENT
Fluorescence SLIGHT

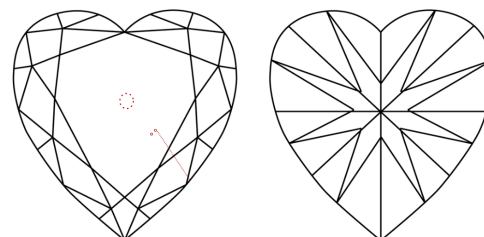
Inscription(s) LABGROWN IGI LG534239260
Comments: This Laboratory Grown Diamond was created by Chemical Vapor Deposition (CVD) growth process.
Indications of post-growth treatment.

LG534239260

PROPORTIONS



CLARITY CHARACTERISTICS



KEY TO SYMBOLS

Red symbols indicate internal characteristics.
Green symbols indicate external characteristics.

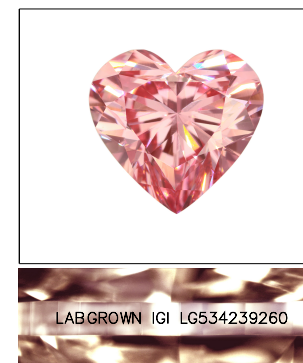
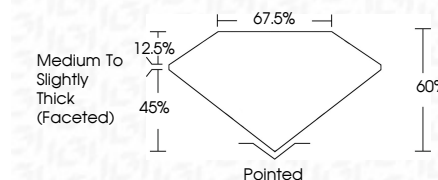
LABORATORY GROWN DIAMOND REPORT

LABORATORY GROWN DIAMOND REPORT

July 1, 2022
IGI Report Number LG534239260
Description LABORATORY GROWN DIAMOND
Shape and Cutting Style HEART BRILLIANT
Measurements 7.77 X 8.60 X 5.16 MM
GRADING RESULTS
Carat Weight 2.01 CARATS
Color Grade FANCY INTENSE BROWN PINK
Clarity Grade SI 1

GRADING SCALES

Table showing color grading scales (CL, NC, FT, VLT, LT) and clarity (10x) grading scales (FL, IF, VVS, VS, SI, I) with their corresponding descriptions.



LABGROWN IGI LG534239260

LASERSCRIBE SM

Sample Image Used

ADDITIONAL GRADING INFORMATION

Polish EXCELLENT
Symmetry EXCELLENT
Fluorescence SLIGHT

Inscription(s) LABGROWN IGI LG534239260

Comments: This Laboratory Grown Diamond was created by Chemical Vapor Deposition (CVD) growth process.
Indications of post-growth treatment.



IGI

July 1, 2022
IGI Report No LG534239260
HEART BRILLIANT
Carat Weight 2.01 CARATS
Color Grade FANCY INTENSE BROWN PINK
Clarity Grade SI 1
Depth 65%
Table 67.5%
Girdle Medium to Slightly Thick (Faceted)
Culet Pointed
Polish EXCELLENT
Symmetry EXCELLENT
Fluorescence SLIGHT
Inscription(s) LABGROWN IGI LG534239260
Comments: This Laboratory Grown Diamond was created by Chemical Vapor Deposition (CVD) growth process.
Indications of post-growth treatment.

