



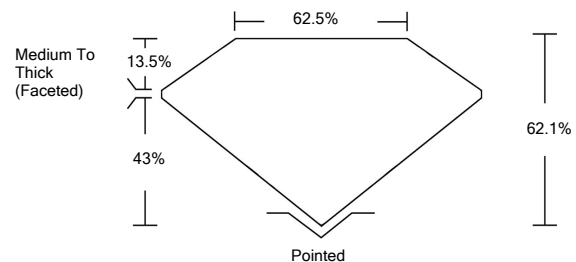
**ELECTRONIC COPY**

LG534247795

**GRADING SCALES**

COLOR GRADING SCALE	CL	NC	FT	VL	LT	
	COLORLESS D-F	NEAR COLORLESS G-J	FAINT K-M	VERY LIGHT N-R	LIGHT S-Z	
CLARITY (10x) GRADING SCALE	FL	IF	VVS	VS	SI	I
	FLAWLESS INTERNALLY FLAWLESS	VERY VERY SLIGHTLY INCLUDED	VERY SLIGHTLY INCLUDED	SLIGHTLY INCLUDED	INCLUDED	

**PROPORTIONS**

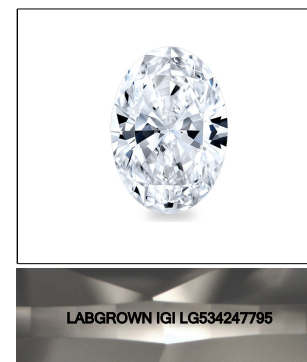


**CLARITY CHARACTERISTICS**



**KEY TO SYMBOLS**

Red symbols indicate internal characteristics.  
Green symbols indicate external characteristics.



**LASERSCRIBE<sup>SM</sup>**  
Sample Image Used

June 22, 2022

IGI Report Number **LG534247795**

Description **LABORATORY GROWN DIAMOND**

Shape and Cutting Style **OVAL BRILLIANT**

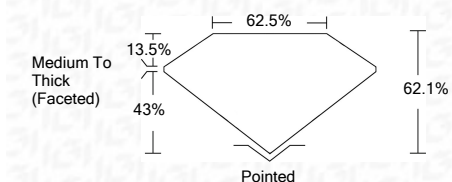
Measurements **8.94 X 6.68 X 4.15 MM**

**GRADING RESULTS**

Carat Weight **1.61 CARAT**

Color Grade **E**

Clarity Grade **SI 2**



**ADDITIONAL GRADING INFORMATION**

Polish **VERY GOOD**

Symmetry **EXCELLENT**

Fluorescence **NONE**

Inscription(s) **LABGROWN IGI LG534247795**

Comments: As Grown - No indication of post-growth treatment.  
This Laboratory Grown Diamond was created by High Pressure High Temperature (HPHT) growth process.  
Type II



**IGI**

IGI Report No. LG534247795	1.61 CARAT	E	SI 2	62.1%	62.5%	Medium To Thick (Faceted)	Pointed	VERY GOOD	EXCELLENT	NONE	LABGROWN IGI LG534247795
June 22, 2022	8.94 X 6.68 X 4.15 MM										
IGI Report No. LG534247795	8.94 X 6.68 X 4.15 MM	1.61 CARAT	SI 2	62.1%	62.5%	Medium To Thick (Faceted)	Pointed	VERY GOOD	EXCELLENT	NONE	LABGROWN IGI LG534247795
IGI Report No. LG534247795	8.94 X 6.68 X 4.15 MM	1.61 CARAT	SI 2	62.1%	62.5%	Medium To Thick (Faceted)	Pointed	VERY GOOD	EXCELLENT	NONE	LABGROWN IGI LG534247795