

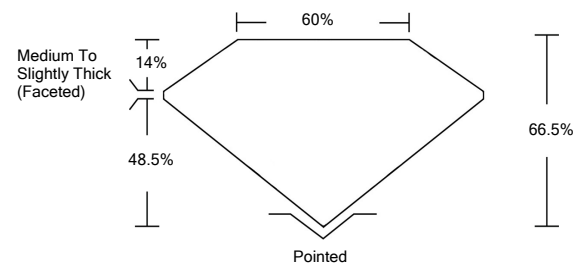


ELECTRONIC COPY

LABORATORY GROWN DIAMOND REPORT

LG534248103

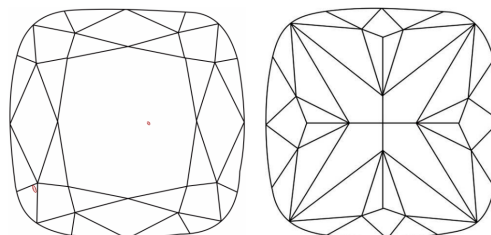
PROPORTIONS



GRADING SCALES

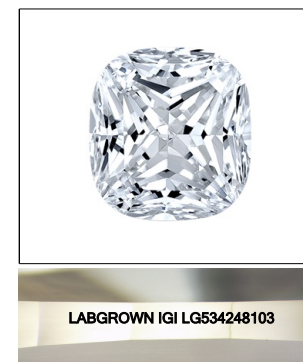
COLOR GRADING SCALE	CL	NC	FT	VL	LT	
	COLORLESS D-F	NEAR COLORLESS G-J	FAINT K-M	VERY LIGHT N-R	LIGHT S-Z	
CLARITY (10x) GRADING SCALE	FL	IF	VVS	VS	SI	I
	FLAWLESS INTERNALLY FLAWLESS	VERY VERY SLIGHTLY INCLUDED	VERY SLIGHTLY INCLUDED	SLIGHTLY INCLUDED	INCLUDED	INCLUDED

CLARITY CHARACTERISTICS



KEY TO SYMBOLS

Red symbols indicate internal characteristics.
Green symbols indicate external characteristics.



LASERSCRIBESM
Sample Image Used

June 22, 2022

IGI Report Number **LG534248103**

Description **LABORATORY GROWN DIAMOND**

Shape and Cutting Style **SQUARE CUSHION BRILLIANT**

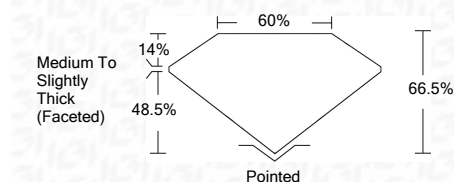
Measurements **6.79 X 6.60 X 4.39 MM**

GRADING RESULTS

Carat Weight **1.57 CARAT**

Color Grade **E**

Clarity Grade **VS 1**



ADDITIONAL GRADING INFORMATION

Polish **VERY GOOD**

Symmetry **VERY GOOD**

Fluorescence **NONE**

Inscription(s) **LABGROWN IGI LG534248103**

Comments: As Grown - No indication of post-growth treatment.
This Laboratory Grown Diamond was created by High Pressure High Temperature (HPHT) growth process.
Type II



IGI

IGI Report No. LG534248103	1.57 CARAT	E
SQUARE CUSHION BRILLIANT	VS 1	66.5%
6.79 X 6.60 X 4.39 MM	60%	60%
Carat Weight	Medium To Slightly Thick (Faceted)	Pointed
Color Grade	VERY GOOD	VERY GOOD
Clarity Grade	VERY GOOD	VERY GOOD
Depth	NONE	NONE
Table	LABGROWN IGI	LABGROWN IGI
Girdle	LG534248103	LG534248103
Culet		
Polish		
Symmetry		
Fluorescence		
Inscription(s)		
Comments:		

As Grown - No indication of post-growth treatment.
This Laboratory Grown Diamond was created by High Pressure High Temperature (HPHT) growth process.
Type II

