



# INTERNATIONAL GEMOLOGICAL INSTITUTE

ELECTRONIC COPY

## LABORATORY GROWN DIAMOND REPORT

LG534251087

### LABORATORY GROWN DIAMOND REPORT

#### IGI LABORATORY GROWN DIAMOND IDENTIFICATION REPORT

June 29, 2022  
IGI Report Number LG534251087  
Description LABORATORY GROWN DIAMOND  
Shape and Cutting Style ROUND BRILLIANT  
Measurements 4.40 - 4.43 X 2.73 MM

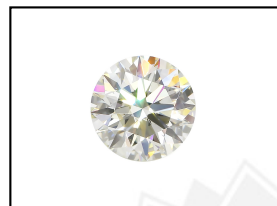
#### GRADING RESULTS

Carat Weight 0.33 CARAT  
Color Grade E  
Clarity Grade VS 1  
Cut Grade EXCELLENT

#### ADDITIONAL GRADING INFORMATION

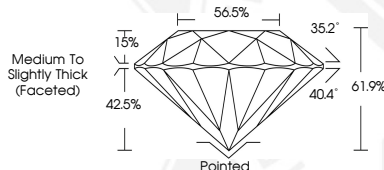
Polish EXCELLENT  
Symmetry EXCELLENT  
Fluorescence NONE  
Inscription(s) LABGROWN IGI LG534251087

Comments: As Grown - No indication of post-growth treatment.  
This Laboratory Grown Diamond was created by High Pressure High Temperature (HPHT) growth process.  
Type II



LABGROWN IGI LG534251087

LASERSCRIBE<sup>SM</sup>  
Sample Images Used



#### IGI LABORATORY GROWN DIAMOND ID REPORT

June 29, 2022  
IGI Report Number LG534251087  
ROUND BRILLIANT  
4.40 - 4.43 X 2.73 MM  
Carat Weight 0.33 CARAT  
Color Grade E  
Clarity Grade VS 1  
Cut Grade EXCELLENT  
Polish EXCELLENT  
Symmetry EXCELLENT  
Fluorescence NONE  
Inscription(s) LABGROWN IGI LG534251087

Comments: As Grown - No indication of post-growth treatment.  
This Laboratory Grown Diamond was created by High Pressure High Temperature (HPHT) growth process.  
Type II

#### IGI LABORATORY GROWN DIAMOND ID REPORT

June 29, 2022  
IGI Report Number LG534251087  
ROUND BRILLIANT  
4.40 - 4.43 X 2.73 MM  
Carat Weight 0.33 CARAT  
Color Grade E  
Clarity Grade VS 1  
Cut Grade EXCELLENT  
Polish EXCELLENT  
Symmetry EXCELLENT  
Fluorescence NONE  
Inscription(s) LABGROWN IGI LG534251087

Comments: As Grown - No indication of post-growth treatment.  
This Laboratory Grown Diamond was created by High Pressure High Temperature (HPHT) growth process.  
Type II



THIS DOCUMENT WAS PRODUCED WITH THE FOLLOWING SECURITY MEASURES: SPECIAL DOCUMENT PAPER, INK SCREENS, WATERMARK, BACKGROUND DESIGN, HOLOGRAM AND OTHER SECURITY FEATURES NOT LISTED AND DO EXCEED DOCUMENT SECURITY INDUSTRY GUIDELINES.

For terms & conditions and to verify this report, please visit [www.igi.org](http://www.igi.org)