



ELECTRONIC COPY

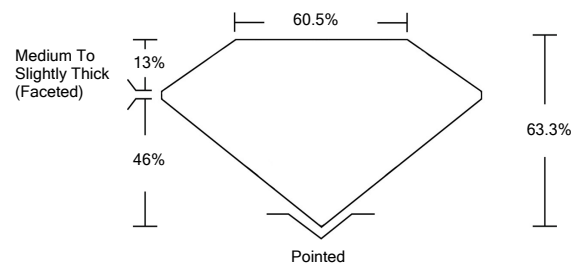
LABORATORY GROWN DIAMOND REPORT

LG534252867

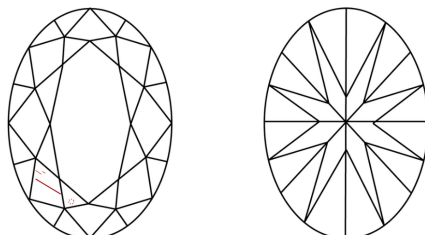
GRADING SCALES

COLOR GRADING SCALE	CL	NC	FT	VL	LT	
	COLORLESS D-F	NEAR COLORLESS G-J	FAINT K-M	VERY LIGHT N-R	LIGHT S-Z	
CLARITY (10x) GRADING SCALE	FL	IF	VVS	VS	SI	I
	FLAWLESS INTERNALLY FLAWLESS	VERY VERY SLIGHTLY INCLUDED	VERY SLIGHTLY INCLUDED	SLIGHTLY INCLUDED	INCLUDED	

PROPORTIONS

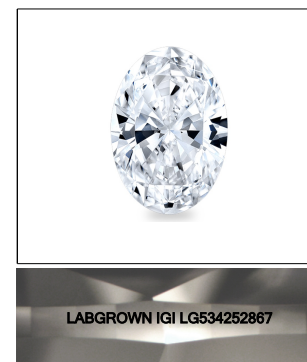


CLARITY CHARACTERISTICS



KEY TO SYMBOLS

Red symbols indicate internal characteristics.
Green symbols indicate external characteristics.



LASERSCRIBESM
Sample Image Used

June 23, 2022

IGI Report Number **LG534252867**

Description **LABORATORY GROWN DIAMOND**

Shape and Cutting Style **OVAL BRILLIANT**

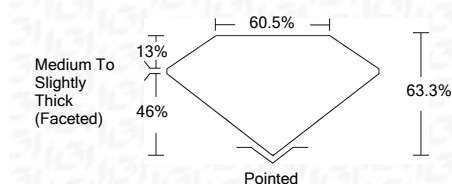
Measurements **9.95 X 6.73 X 4.26 MM**

GRADING RESULTS

Carat Weight **1.80 CARAT**

Color Grade **D**

Clarity Grade **SI 1**



ADDITIONAL GRADING INFORMATION

Polish **EXCELLENT**

Symmetry **EXCELLENT**

Fluorescence **NONE**

Inscription(s) **LABGROWN IGI LG534252867**

Comments: As Grown - No indication of post-growth treatment.
This Laboratory Grown Diamond was created by High Pressure High Temperature (HPHT) growth process.
Type II

June 23, 2022

IGI Report Number **LG534252867**

Description **LABORATORY GROWN DIAMOND**

Shape and Cutting Style **OVAL BRILLIANT**

Measurements **9.95 X 6.73 X 4.26 MM**

GRADING RESULTS

Carat Weight **1.80 CARAT**

Color Grade **D**

Clarity Grade **SI 1**

ADDITIONAL GRADING INFORMATION

Polish **EXCELLENT**

Symmetry **EXCELLENT**

Fluorescence **NONE**

Inscription(s) **LABGROWN IGI LG534252867**

Comments: As Grown - No indication of post-growth treatment.
This Laboratory Grown Diamond was created by High Pressure High Temperature (HPHT) growth process.
Type II



IGI



IGI Report No. LG534252867	1.80 CARAT	D	SI 1	60.5%	63.3%	Pointed	EXCELLENT	EXCELLENT	NONE	LABGROWN IGI LG534252867	Comments: As Grown - No indication of post-growth treatment. This Laboratory Grown Diamond was created by High Pressure High Temperature (HPHT) growth process. Type II
June 23, 2022	9.95 X 6.73 X 4.26 MM					Medium To Slightly Thick (Faceted)					
IGI Report No. LG534252867	9.95 X 6.73 X 4.26 MM	1.80 CARAT	D	SI 1	60.5%	63.3%	Pointed	EXCELLENT	EXCELLENT	NONE	LABGROWN IGI LG534252867
June 23, 2022	9.95 X 6.73 X 4.26 MM	1.80 CARAT	D	SI 1	60.5%	63.3%	Pointed	EXCELLENT	EXCELLENT	NONE	LABGROWN IGI LG534252867