



ELECTRONIC COPY

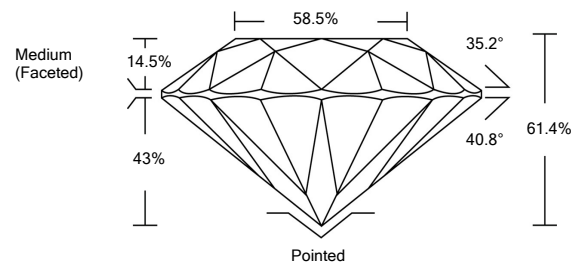
LG534252986

LABORATORY GROWN DIAMOND REPORT

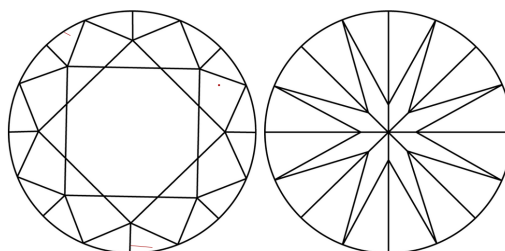
GRADING SCALES

| COLOR GRADING SCALE | CL | NC | FT | VL | LT | |
|-----------------------------|------------------------------|-----------------------------|------------------------|-------------------|-----------|---|
| | COLORLESS D-F | NEAR COLORLESS G-J | FAINT K-M | VERY LIGHT N-R | LIGHT S-Z | |
| CLARITY (10x) GRADING SCALE | FL | IF | VVS | VS | SI | I |
| | FLAWLESS INTERNALLY FLAWLESS | VERY VERY SLIGHTLY INCLUDED | VERY SLIGHTLY INCLUDED | SLIGHTLY INCLUDED | INCLUDED | |

PROPORTIONS

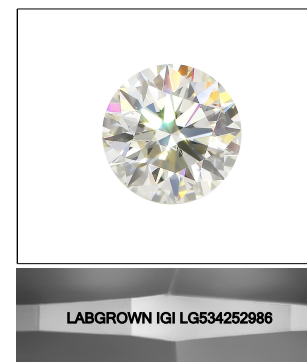


CLARITY CHARACTERISTICS



KEY TO SYMBOLS

Red symbols indicate internal characteristics.
Green symbols indicate external characteristics.



LASERSCRIBESM

Sample Image Used

June 23, 2022

IGI Report Number

LG534252986

Description

**LABORATORY GROWN
DIAMOND**

Shape and Cutting Style

ROUND BRILLIANT

Measurements

9.55 - 9.58 X 5.88 MM

GRADING RESULTS

Carat Weight

3.34 CARATS

Color Grade

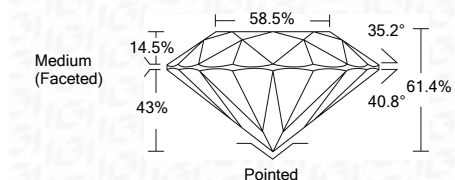
F

Clarity Grade

VS 1

Cut Grade

IDEAL



ADDITIONAL GRADING INFORMATION

Polish

EXCELLENT

Symmetry

EXCELLENT

Fluorescence

NONE

Inscription(s)

LABGROWN IGI LG534252986

Comments: As Grown - No indication of post-growth treatment.
This Laboratory Grown Diamond was created by High Pressure High Temperature (HPHT) growth process.
Type II

June 23, 2022

IGI Report Number

LG534252986

Description

**LABORATORY GROWN
DIAMOND**

Shape and Cutting Style

ROUND BRILLIANT

Measurements

9.55 - 9.58 X 5.88 MM

GRADING RESULTS

Carat Weight

3.34 CARATS

Color Grade

F

Clarity Grade

VS 1

Cut Grade

IDEAL

ADDITIONAL GRADING INFORMATION

Polish

EXCELLENT

Symmetry

EXCELLENT

Fluorescence

NONE

Inscription(s)

LABGROWN IGI LG534252986

Comments: As Grown - No indication of post-growth treatment.
This Laboratory Grown Diamond was created by High Pressure High Temperature (HPHT) growth process.
Type II



IGI

| | | | |
|----------------------------|---|--------------|--------------|
| IGI Report No. LG534252986 | 3.34 CARATS | F | Pointed |
| ROUND BRILLIANT | VS 1 | EXCELLENT | EXCELLENT |
| 9.55 - 9.58 X 5.88 MM | IDEAL | EXCELLENT | EXCELLENT |
| Carat Weight | 61.4% | NONE | NONE |
| Color Grade | 58.5% | LABGROWN IGI | LABGROWN IGI |
| Clarity Grade | Medium (Faceted) | LG534252986 | LG534252986 |
| Cut Grade | | | |
| Depth | | | |
| Table | | | |
| Girdle | | | |
| Culet | | | |
| Polish | | | |
| Symmetry | | | |
| Fluorescence | | | |
| Inscription(s) | | | |
| Comments: | As Grown - No indication of post-growth treatment. This Laboratory Grown Diamond was created by High Pressure High Temperature (HPHT) growth process. Type II | | |