



**ELECTRONIC COPY**

**LABORATORY GROWN DIAMOND REPORT**

July 1, 2022  
 IGI Report Number **LG534264633**  
 Description **LABORATORY GROWN  
DIAMOND**  
 Shape and Cutting Style **CUSHION BRILLIANT**  
 Measurements **6.64 X 5.29 X 3.36 MM**

**GRADING RESULTS**

Carat Weight **1.00 CARAT**  
 Color Grade **D**  
 Clarity Grade **VS 1**

**ADDITIONAL GRADING INFORMATION**

Polish **EXCELLENT**  
 Symmetry **VERY GOOD**  
 Fluorescence **NONE**

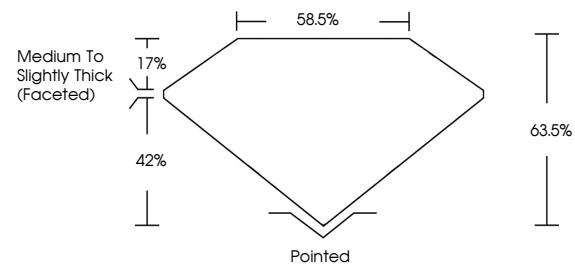
Inscription(s) **LABGROWN IGI LG534264633**

Comments: As Grown - No indication of post-growth treatment.

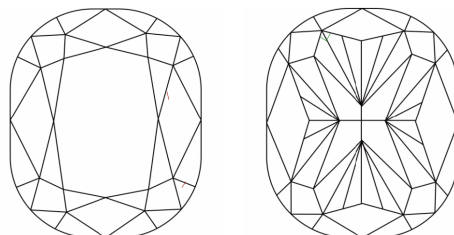
This Laboratory Grown Diamond was created by High Pressure High Temperature (HPHT) growth process. Type II

LG534264633

**PROPORTIONS**



**CLARITY CHARACTERISTICS**

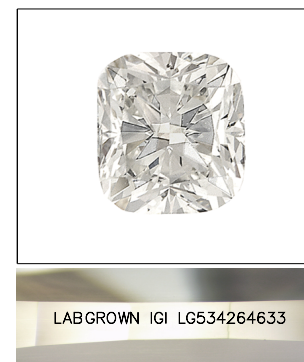


**KEY TO SYMBOLS**

Red symbols indicate internal characteristics.  
 Green symbols indicate external characteristics.

**GRADING SCALES**

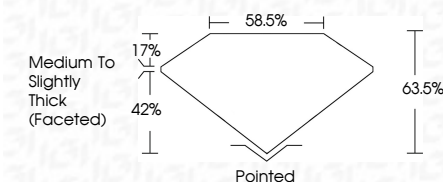
|                             |                              |                             |                        |                   |           |          |
|-----------------------------|------------------------------|-----------------------------|------------------------|-------------------|-----------|----------|
| COLOR GRADING SCALE         | CL                           | NC                          | FT                     | VLT               | LT        |          |
|                             | COLORLESS D-F                | NEAR COLORLESS G-J          | FAINT K-M              | VERY LIGHT N-R    | LIGHT S-Z |          |
| CLARITY (10x) GRADING SCALE | FL                           | IF                          | VVS                    | VS                | SI        | I        |
|                             | FLAWLESS INTERNALLY FLAWLESS | VERY VERY SLIGHTLY INCLUDED | VERY SLIGHTLY INCLUDED | SLIGHTLY INCLUDED | INCLUDED  | INCLUDED |



**LASERSCRIBE<sup>SM</sup>**

Sample Image Used

July 1, 2022  
 IGI Report Number **LG534264633**  
 Description **LABORATORY GROWN  
DIAMOND**  
 Shape and Cutting Style **CUSHION BRILLIANT**  
 Measurements **6.64 X 5.29 X 3.36 MM**  
**GRADING RESULTS**  
 Carat Weight **1.00 CARAT**  
 Color Grade **D**  
 Clarity Grade **VS 1**



**ADDITIONAL GRADING INFORMATION**

Polish **EXCELLENT**  
 Symmetry **VERY GOOD**  
 Fluorescence **NONE**  
 Inscription(s) **LABGROWN IGI LG534264633**

Comments: As Grown - No indication of post-growth treatment.  
 This Laboratory Grown Diamond was created by High Pressure High Temperature (HPHT) growth process. Type II



**IGI**

|                   |                           |               |                                    |              |  |                |                          |
|-------------------|---------------------------|---------------|------------------------------------|--------------|--|----------------|--------------------------|
| July 1, 2022      | IGI Report No LG534264633 | Carat Weight  | 1.00 CARAT                         | Color Grade  | D  | Culet          | Pointed                  |
| CUSHION BRILLIANT | 6.64 X 5.29 X 3.36 MM     | Clarity Grade | VS 1                               | Polish       | EXCELLENT  | Symmetry       | VERY GOOD                |
|                   |                           | Depth         | 63.5%                              | Fluorescence | NONE   | Inscription(s) | LABGROWN IGI LG534264633 |
|                   |                           | Table         | 58.5%                              | Comments:    | As Grown - No indication of post-growth treatment. The Laboratory Grown Diamond was created by High Pressure High Temperature (HPHT) growth process. Type II |                |                          |
|                   |                           | Grade         | Medium To Slightly Thick (Faceted) |              |  |                |                          |

