



**INTERNATIONAL  
GEMOLOGICAL  
INSTITUTE**

**ELECTRONIC COPY**

**LABORATORY GROWN  
DIAMOND REPORT**

**IGI LABORATORY GROWN  
DIAMOND ID REPORT**

**LABORATORY GROWN DIAMOND REPORT**

**IGI LABORATORY GROWN DIAMOND IDENTIFICATION REPORT**

July 5, 2022  
IGI Report Number LG536200180  
Description LABORATORY GROWN DIAMOND  
Shape and Cutting Style PRINCESS CUT  
Measurements 4.46 X 4.29 X 3.10 MM

**GRADING RESULTS**

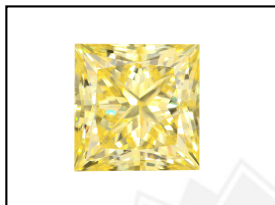
Carat Weight 0.53 CARAT  
Color Grade FANCY VIVID YELLOW  
Clarity Grade SI 1

**ADDITIONAL GRADING INFORMATION**

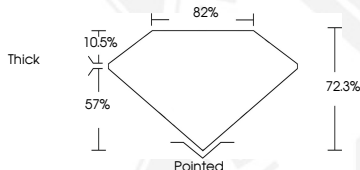
Polish VERY GOOD  
Symmetry VERY GOOD  
Fluorescence NONE  
Inscription(s) LABGROWN IGI LG536200180

Comments: As Grown - No indication of post-growth treatment.  
This Laboratory Grown Diamond was created by High Pressure High Temperature (HPHT) growth process.

**LG536200180**



**LASERSCRIBE<sup>SM</sup>**  
Sample Images Used



July 5, 2022  
IGI Report Number **LG536200180**  
**PRINCESS CUT**  
**4.46 X 4.29 X 3.10 MM**  
Carat Weight 0.53 CARAT  
Color Grade FANCY VIVID YELLOW  
Clarity Grade SI 1  
Polish VERY GOOD  
Symmetry VERY GOOD  
Fluorescence NONE  
Inscription(s) LABGROWN IGI LG536200180

Comments: As Grown - No indication of post-growth treatment.  
This Laboratory Grown Diamond was created by High Pressure High Temperature (HPHT) growth process.

**IGI LABORATORY GROWN  
DIAMOND ID REPORT**

July 5, 2022  
IGI Report Number **LG536200180**  
**PRINCESS CUT**  
**4.46 X 4.29 X 3.10 MM**  
Carat Weight 0.53 CARAT  
Color Grade FANCY VIVID YELLOW  
Clarity Grade SI 1  
Polish VERY GOOD  
Symmetry VERY GOOD  
Fluorescence NONE  
Inscription(s) LABGROWN IGI LG536200180

Comments: As Grown - No indication of post-growth treatment.  
This Laboratory Grown Diamond was created by High Pressure High Temperature (HPHT) growth process.

THIS DOCUMENT WAS PRODUCED WITH THE FOLLOWING SECURITY MEASURES: SPECIAL DOCUMENT PAPER, INK SCREENS, WATERMARK, BACKGROUND DESIGN, HOLOGRAM AND OTHER SECURITY FEATURES NOT LISTED AND DO EXCEED DOCUMENT SECURITY INDUSTRY GUIDELINES.

For terms & conditions and to verify this report, please visit [www.igi.org](http://www.igi.org)