



ELECTRONIC COPY

LABORATORY GROWN DIAMOND REPORT

July 12, 2022
IGI Report Number **LG536203238**
Description **LABORATORY GROWN
DIAMOND**
Shape and Cutting Style **HEART BRILLIANT**
Measurements **7.48 X 8.77 X 5.02 MM**

GRADING RESULTS

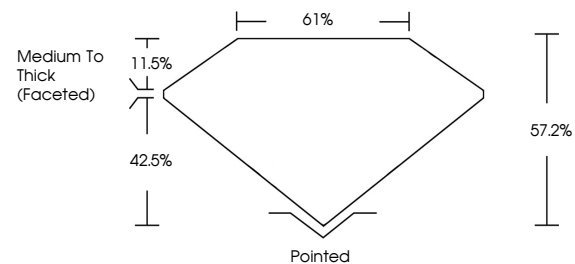
Carat Weight **1.86 CARAT**
Color Grade **F**
Clarity Grade **VS 1**

ADDITIONAL GRADING INFORMATION

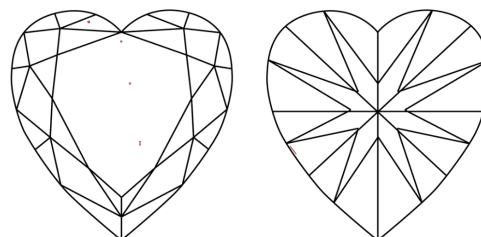
Polish **EXCELLENT**
Symmetry **EXCELLENT**
Fluorescence **NONE**
Inscription(s) **LABGROWN IGI LG536203238**
Comments: This Laboratory Grown Diamond was created by Chemical Vapor Deposition (CVD) growth process and may include post-growth treatment. Type IIa

LG536203238

PROPORTIONS



CLARITY CHARACTERISTICS



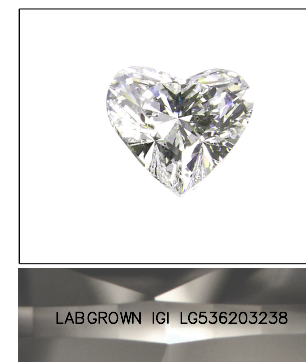
KEY TO SYMBOLS

Red symbols indicate internal characteristics.
Green symbols indicate external characteristics.

**LABORATORY GROWN
DIAMOND REPORT**

GRADING SCALES

| COLOR GRADING SCALE | CL | NC | FT | VLT | LT | |
|-----------------------------|------------------------------|-----------------------------|------------------------|-------------------|-----------|---|
| | COLORLESS D-F | NEAR COLORLESS G-J | FAINT K-M | VERY LIGHT N-R | LIGHT S-Z | |
| CLARITY (10x) GRADING SCALE | FL | IF | VVS | VS | SI | I |
| | FLAWLESS INTERNALLY FLAWLESS | VERY VERY SLIGHTLY INCLUDED | VERY SLIGHTLY INCLUDED | SLIGHTLY INCLUDED | INCLUDED | |



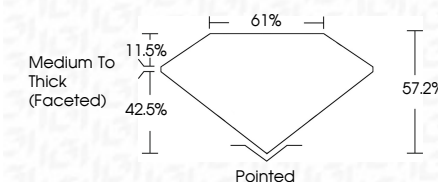
LABGROWN IGI LG536203238

LASERSCRIBESM

Sample Image Used

LABORATORY GROWN DIAMOND REPORT

July 12, 2022
IGI Report Number **LG536203238**
Description **LABORATORY GROWN
DIAMOND**
Shape and Cutting Style **HEART BRILLIANT**
Measurements **7.48 X 8.77 X 5.02 MM**
GRADING RESULTS
Carat Weight **1.86 CARAT**
Color Grade **F**
Clarity Grade **VS 1**



ADDITIONAL GRADING INFORMATION

Polish **EXCELLENT**
Symmetry **EXCELLENT**
Fluorescence **NONE**
Inscription(s) **LABGROWN IGI LG536203238**
Comments: This Laboratory Grown Diamond was created by Chemical Vapor Deposition (CVD) growth process and may include post-growth treatment. Type IIa



IGI

July 12, 2022
IGI Report No **LG536203238**
HEART BRILLIANT
7.48 X 8.77 X 5.02 MM

Carat Weight **1.86 CARAT**
Color Grade **F**
Clarity Grade **VS 1**
Depth **57.2%**
Table **61%**
Girdle **Medium To Thick (Faceted)**

Culet **Pointed**
Polish **EXCELLENT**
Symmetry **EXCELLENT**
Fluorescence **NONE**
Inscription(s) **LASERSCRIBE IGI LG536203238**
Comments: **LABGROWN IGI LG536203238**

The Laboratory Grown Diamond was created by Chemical Vapor Deposition (CVD) growth process and may include post-growth treatment. Type IIa