



**INTERNATIONAL
GEMOLOGICAL
INSTITUTE**

ELECTRONIC COPY

**LABORATORY GROWN
DIAMOND REPORT**

**IGI LABORATORY GROWN
DIAMOND ID REPORT**

July 14, 2022
IGI Report Number **LG536203883**

LABORATORY GROWN DIAMOND REPORT

LG536203883

IGI LABORATORY GROWN DIAMOND IDENTIFICATION REPORT

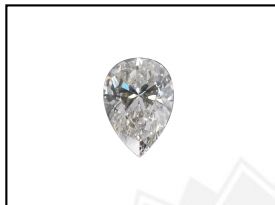
July 14, 2022
IGI Report Number **LG536203883**
Description **LABORATORY GROWN DIAMOND**
Shape and Cutting Style **PEAR BRILLIANT**
Measurements **8.29 X 4.98 X 2.84 MM**

PEAR BRILLIANT
8.29 X 4.98 X 2.84 MM
Carat Weight 0.71 CARAT
Color Grade H
Clarity Grade VS 1
Polish EXCELLENT
Symmetry VERY GOOD
Fluorescence NONE
Inscription(s) **LABGROWN IGI
LG536203883**

Comments: This Laboratory Grown Diamond was created by Chemical Vapor Deposition (CVD) growth process and may include post-growth treatment. Type Ila

GRADING RESULTS

Carat Weight 0.71 CARAT
Color Grade H
Clarity Grade VS 1



ADDITIONAL GRADING INFORMATION

Polish EXCELLENT
Symmetry VERY GOOD
Fluorescence NONE
Inscription(s) **LABGROWN IGI LG536203883**

LASERSCRIBESM
Sample Images Used



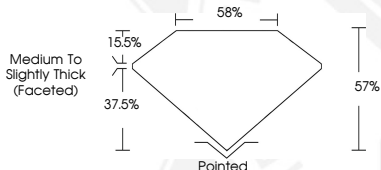
Comments: This Laboratory Grown Diamond was created by Chemical Vapor Deposition (CVD) growth process and may include post-growth treatment. Type Ila

**IGI LABORATORY GROWN
DIAMOND ID REPORT**

July 14, 2022
IGI Report Number **LG536203883**

PEAR BRILLIANT
8.29 X 4.98 X 2.84 MM
Carat Weight 0.71 CARAT
Color Grade H
Clarity Grade VS 1
Polish EXCELLENT
Symmetry VERY GOOD
Fluorescence NONE
Inscription(s) **LABGROWN IGI
LG536203883**

Comments: This Laboratory Grown Diamond was created by Chemical Vapor Deposition (CVD) growth process and may include post-growth treatment. Type Ila



THIS DOCUMENT WAS PRODUCED WITH THE FOLLOWING SECURITY MEASURES: SPECIAL DOCUMENT PAPER, INK SCREENS, WATERMARK, BACKGROUND DESIGN, HOLOGRAM AND OTHER SECURITY FEATURES NOT LISTED AND DO EXCEED DOCUMENT SECURITY INDUSTRY GUIDELINES.

For terms & conditions and to verify this report, please visit www.igi.org