



ELECTRONIC COPY

LABORATORY GROWN DIAMOND REPORT

August 24, 2022
IGI Report Number **LG536207055**
Description **LABORATORY GROWN
DIAMOND**
Shape and Cutting Style **ROUND BRILLIANT**
Measurements **8.58 - 8.62 X 5.26 MM**

GRADING RESULTS

Carat Weight **2.42 CARATS**
Color Grade **G**
Clarity Grade **VS 1**
Cut Grade **IDEAL**

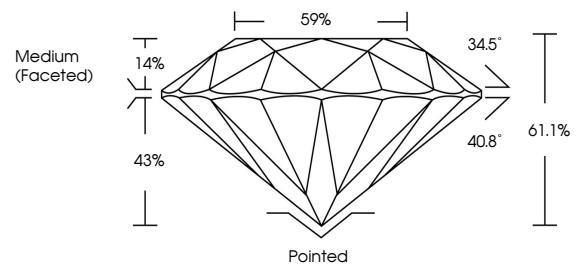
ADDITIONAL GRADING INFORMATION

Polish **EXCELLENT**
Symmetry **EXCELLENT**
Fluorescence **NONE**
Inscription(s) **LABGROWN IGI LG536207055**

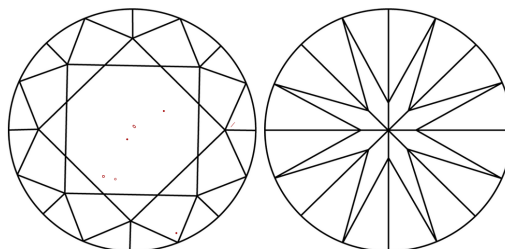
Comments: HEARTS & ARROWS
This Laboratory Grown Diamond was created by Chemical Vapor Deposition (CVD) growth process and may include post-growth treatment.
Type IIa

LG536207055

PROPORTIONS

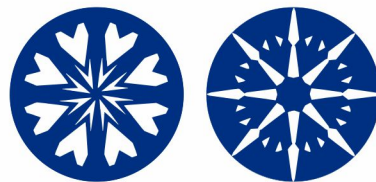


CLARITY CHARACTERISTICS



KEY TO SYMBOLS

Red symbols indicate internal characteristics.
Green symbols indicate external characteristics.

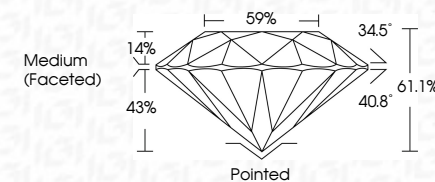


www.igi.org

**LABORATORY GROWN
DIAMOND REPORT**

LABORATORY GROWN DIAMOND REPORT

August 24, 2022
IGI Report Number **LG536207055**
Description **LABORATORY GROWN
DIAMOND**
Shape and Cutting Style **ROUND BRILLIANT**
Measurements **8.58 - 8.62 X 5.26 MM**
GRADING RESULTS
Carat Weight **2.42 CARATS**
Color Grade **G**
Clarity Grade **VS 1**
Cut Grade **IDEAL**

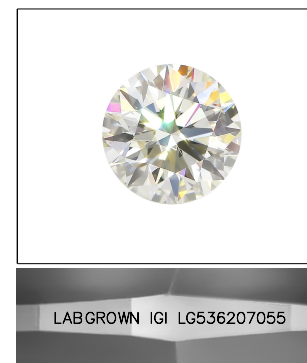


ADDITIONAL GRADING INFORMATION

Polish **EXCELLENT**
Symmetry **EXCELLENT**
Fluorescence **NONE**
Inscription(s) **LABGROWN IGI LG536207055**
Comments: HEARTS & ARROWS
This Laboratory Grown Diamond was created by Chemical Vapor Deposition (CVD) growth process and may include post-growth treatment.
Type IIa

GRADING SCALES

COLOR GRADING SCALE	CL	NC	FT	VLT	LT	
	COLORLESS D-F	NEAR COLORLESS G-J	FAINT K-M	VERY LIGHT N-R	LIGHT S-Z	
CLARITY (10x) GRADING SCALE	FL	IF	VVS	VS	SI	I
	FLAWLESS INTERNALLY FLAWLESS	VERY VERY SLIGHTLY INCLUDED	VERY SLIGHTLY INCLUDED	SLIGHTLY INCLUDED		INCLUDED



LASERSCRIBESM

Sample Image Used



IGI

August 24, 2022
IGI Report No LG536207055
ROUND BRILLIANT
Carat Weight **2.42 CARATS**
Color Grade **G**
Clarity Grade **VS 1**
Cut Grade **IDEAL**
Depth **61.1%**
Table **59%**
Girdle **Medium (Faceted)**
Culet **Pointed**
Polish **EXCELLENT**
Symmetry **EXCELLENT**
Fluorescence **NONE**
Inscription(s) **LABGROWN IGI LG536207055**
Comments: **HEARTS & ARROWS**
This Laboratory Grown Diamond was created by Chemical Vapor Deposition (CVD) growth process and may include post-growth treatment.
Type IIa