



**ELECTRONIC COPY**

**LABORATORY GROWN DIAMOND REPORT**

August 24, 2022  
 IGI Report Number **LG536207056**  
 Description **LABORATORY GROWN  
DIAMOND**  
 Shape and Cutting Style **ROUND BRILLIANT**  
 Measurements **8.51 - 8.55 X 5.22 MM**

**GRADING RESULTS**

Carat Weight **2.36 CARATS**  
 Color Grade **G**  
 Clarity Grade **VS 1**  
 Cut Grade **IDEAL**

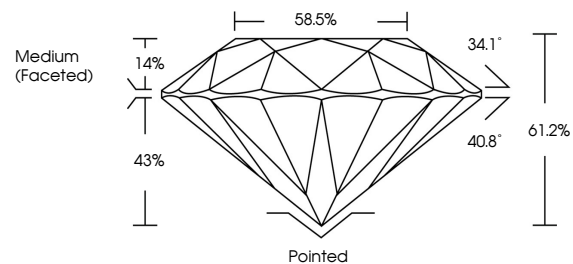
**ADDITIONAL GRADING INFORMATION**

Polish **EXCELLENT**  
 Symmetry **EXCELLENT**  
 Fluorescence **NONE**  
 Inscription(s) **LABGROWN IGI LG536207056**

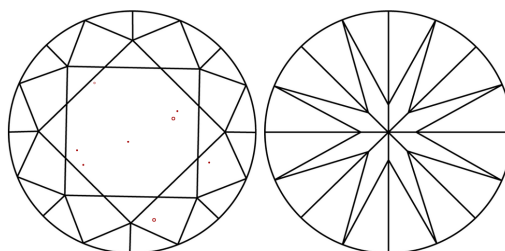
Comments: HEARTS & ARROWS  
 This Laboratory Grown Diamond was created by  
 Chemical Vapor Deposition (CVD) growth process and  
 may include post-growth treatment.  
 Type IIa

LG536207056

**PROPORTIONS**



**CLARITY CHARACTERISTICS**



**KEY TO SYMBOLS**

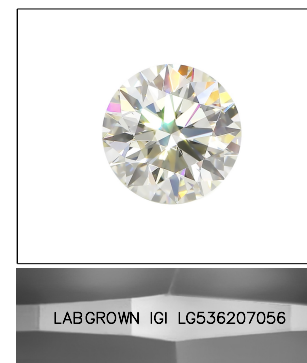
Red symbols indicate internal characteristics.  
 Green symbols indicate external characteristics.



www.igi.org

**GRADING SCALES**

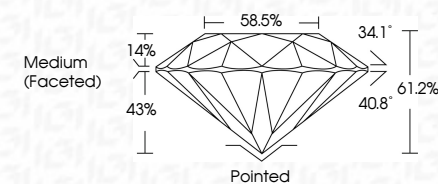
|                             |                              |                             |                        |                   |           |   |
|-----------------------------|------------------------------|-----------------------------|------------------------|-------------------|-----------|---|
| COLOR GRADING SCALE         | CL                           | NC                          | FT                     | VLT               | LT        |   |
|                             | COLORLESS D-F                | NEAR COLORLESS G-J          | FAINT K-M              | VERY LIGHT N-R    | LIGHT S-Z |   |
| CLARITY (10x) GRADING SCALE | FL                           | IF                          | VVS                    | VS                | SI        | I |
|                             | FLAWLESS INTERNALLY FLAWLESS | VERY VERY SLIGHTLY INCLUDED | VERY SLIGHTLY INCLUDED | SLIGHTLY INCLUDED | INCLUDED  |   |



LASERSCRIBE<sup>SM</sup>

Sample Image Used

August 24, 2022  
 IGI Report Number **LG536207056**  
 Description **LABORATORY GROWN  
DIAMOND**  
 Shape and Cutting Style **ROUND BRILLIANT**  
 Measurements **8.51 - 8.55 X 5.22 MM**  
**GRADING RESULTS**  
 Carat Weight **2.36 CARATS**  
 Color Grade **G**  
 Clarity Grade **VS 1**  
 Cut Grade **IDEAL**



**ADDITIONAL GRADING INFORMATION**

Polish **EXCELLENT**  
 Symmetry **EXCELLENT**  
 Fluorescence **NONE**  
 Inscription(s) **LABGROWN IGI LG536207056**

Comments: HEARTS & ARROWS  
 This Laboratory Grown Diamond was created by  
 Chemical Vapor Deposition (CVD) growth process and  
 may include post-growth treatment.  
 Type IIa



**IGI**



August 24, 2022  
 IGI Report No LG536207056  
**ROUND BRILLIANT**  
 8.51 - 8.55 X 5.22 MM  
 Carat Weight **2.36 CARATS**  
 Color Grade **G**  
 Clarity Grade **VS 1**  
 Cut Grade **IDEAL**  
 Depth **61.2%**  
 Table **58.5%**  
 Girdle **Medium (Faceted)**  
 Culet **Pointed**  
 Polish **EXCELLENT**  
 Symmetry **EXCELLENT**  
 Fluorescence **NONE**  
 Inscription(s) **LABGROWN IGI LG536207056**  
 Comments: **HEARTS & ARROWS**  
 This Laboratory Grown Diamond was created by Chemical Vapor Deposition (CVD) growth process and may include post-growth treatment.  
 Type IIa