



ELECTRONIC COPY

LABORATORY GROWN DIAMOND REPORT

August 24, 2022
 IGI Report Number **LG536207058**
 Description **LABORATORY GROWN
DIAMOND**
 Shape and Cutting Style **ROUND BRILLIANT**
 Measurements **8.38 - 8.43 X 5.12 MM**

GRADING RESULTS

Carat Weight **2.22 CARATS**
 Color Grade **G**
 Clarity Grade **VS 1**
 Cut Grade **IDEAL**

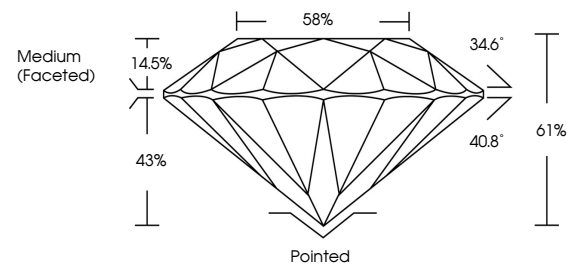
ADDITIONAL GRADING INFORMATION

Polish **EXCELLENT**
 Symmetry **EXCELLENT**
 Fluorescence **NONE**
 Inscription(s) **LABGROWN IGI LG536207058**

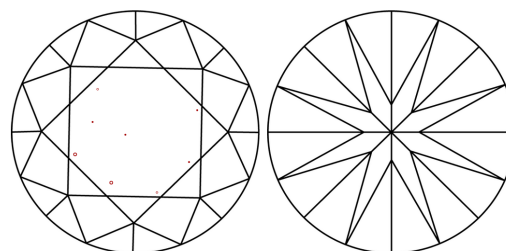
Comments: HEARTS & ARROWS
 This Laboratory Grown Diamond was created by
 Chemical Vapor Deposition (CVD) growth process and
 may include post-growth treatment.
 Type IIa

LG536207058

PROPORTIONS

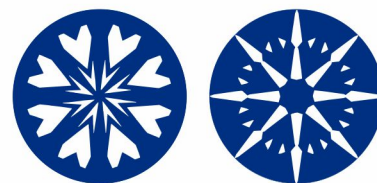


CLARITY CHARACTERISTICS



KEY TO SYMBOLS

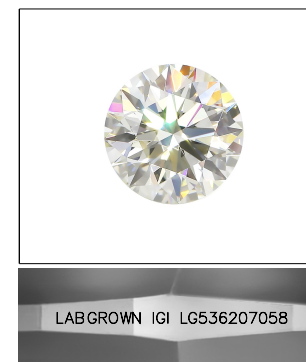
Red symbols indicate internal characteristics.
 Green symbols indicate external characteristics.



www.igi.org

GRADING SCALES

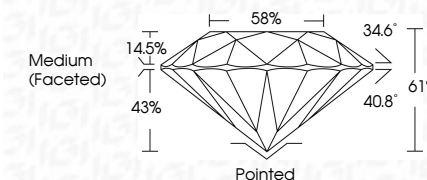
COLOR GRADING SCALE	CL	NC	FT	VLT	LT	
	COLORLESS D-F	NEAR COLORLESS G-J	FAINT K-M	VERY LIGHT N-R	LIGHT S-Z	
CLARITY (10x) GRADING SCALE	FL	IF	VVS	VS	SI	I
	FLAWLESS INTERNALLY FLAWLESS	VERY VERY SLIGHTLY INCLUDED	VERY SLIGHTLY INCLUDED	SLIGHTLY INCLUDED		INCLUDED



LASERSCRIBESM

Sample Image Used

August 24, 2022
 IGI Report Number **LG536207058**
 Description **LABORATORY GROWN
DIAMOND**
 Shape and Cutting Style **ROUND BRILLIANT**
 Measurements **8.38 - 8.43 X 5.12 MM**
GRADING RESULTS
 Carat Weight **2.22 CARATS**
 Color Grade **G**
 Clarity Grade **VS 1**
 Cut Grade **IDEAL**



ADDITIONAL GRADING INFORMATION

Polish **EXCELLENT**
 Symmetry **EXCELLENT**
 Fluorescence **NONE**
 Inscription(s) **LABGROWN IGI LG536207058**

Comments: HEARTS & ARROWS
 This Laboratory Grown Diamond was created by
 Chemical Vapor Deposition (CVD) growth process and
 may include post-growth treatment.
 Type IIa



IGI

August 24, 2022
 IGI Report No **LG536207058**
ROUND BRILLIANT
8.38 - 8.43 X 5.12 MM
 Carat Weight **2.22 CARATS**
 Color Grade **G**
 Clarity Grade **VS 1**
 Cut Grade **IDEAL**
 Depth **61%**
 Table **58%**
 Girdle **Medium (Faceted)**
 Culet **Pointed**
 Polish **EXCELLENT**
 Symmetry **EXCELLENT**
 Fluorescence **NONE**
 Inscription(s) **LABGROWN IGI LG536207058**
Comments:
HEARTS & ARROWS
 This Laboratory Grown Diamond was
 created by Chemical Vapor Deposition
 (CVD) growth process and may include
 post-growth treatment.
 Type IIa

