



ELECTRONIC COPY

LABORATORY GROWN DIAMOND REPORT

September 1, 2022
IGI Report Number LG536207131
Description LABORATORY GROWN DIAMOND
Shape and Cutting Style ROUND BRILLIANT
Measurements 9.27 - 9.33 X 5.68 MM

GRADING RESULTS

Carat Weight 3.05 CARATS
Color Grade G
Clarity Grade VVS 2
Cut Grade IDEAL

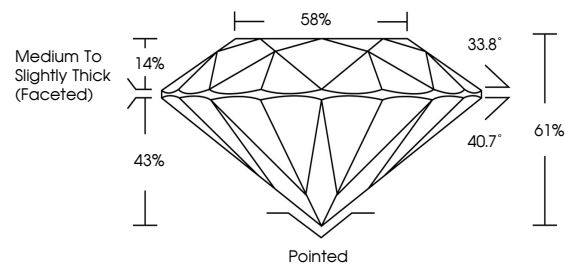
ADDITIONAL GRADING INFORMATION

Polish EXCELLENT
Symmetry EXCELLENT
Fluorescence NONE
Inscription(s) LABGROWN IGI LG536207131

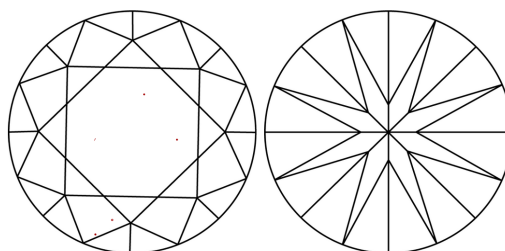
Comments: HEARTS & ARROWS
This Laboratory Grown Diamond was created by Chemical Vapor Deposition (CVD) growth process and may include post-growth treatment. Type IIa

LG536207131

PROPORTIONS



CLARITY CHARACTERISTICS



KEY TO SYMBOLS

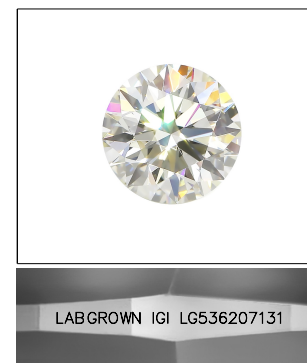
Red symbols indicate internal characteristics.
Green symbols indicate external characteristics.



www.igi.org

GRADING SCALES

Table with 2 rows and 5 columns showing color and clarity grading scales. Color scale: CL (Colorless D-F), NC (Near Colorless G-J), FT (Faint K-M), VLT (Very Light N-R), LT (Light S-Z). Clarity scale: FL (Flawless Internally Flawless), IF (Internally Flawless), VVS (Very Very Slightly Included), VS (Very Slightly Included), SI (Slightly Included), I (Included).

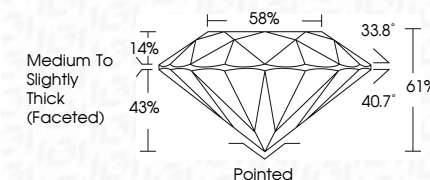


LABGROWN IGI LG536207131

LASERSCRIBE SM

Sample Image Used

September 1, 2022
IGI Report Number LG536207131
Description LABORATORY GROWN DIAMOND
Shape and Cutting Style ROUND BRILLIANT
Measurements 9.27 - 9.33 X 5.68 MM
GRADING RESULTS
Carat Weight 3.05 CARATS
Color Grade G
Clarity Grade VVS 2
Cut Grade IDEAL



ADDITIONAL GRADING INFORMATION

Polish EXCELLENT
Symmetry EXCELLENT
Fluorescence NONE
Inscription(s) LABGROWN IGI LG536207131

Comments: HEARTS & ARROWS
This Laboratory Grown Diamond was created by Chemical Vapor Deposition (CVD) growth process and may include post-growth treatment. Type IIa



Summary table of diamond specifications: September 1, 2022, IGI Report No. LG536207131, ROUND BRILLIANT, 9.27 - 9.33 X 5.68 MM, 3.05 CARATS, G, VVS 2, IDEAL, 61%, 58%, Medium To Slightly Thick (Faceted), Pointed, EXCELLENT, EXCELLENT, NONE, LABGROWN IGI LG536207131, HEARTS & ARROWS, The Laboratory Grown Diamond was created by Chemical Vapor Deposition (CVD) growth process and may include post-growth treatment. Type IIa