



**ELECTRONIC COPY**

**LABORATORY GROWN DIAMOND REPORT**

September 1, 2022  
 IGI Report Number **LG536207183**  
 Description **LABORATORY GROWN  
DIAMOND**  
 Shape and Cutting Style **ROUND BRILLIANT**  
 Measurements **8.47 - 8.50 X 5.27 MM**

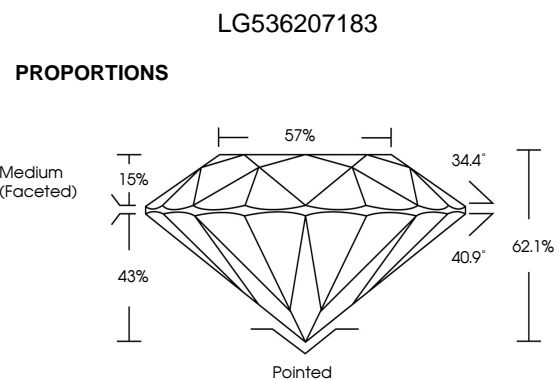
**GRADING RESULTS**

Carat Weight **2.35 CARATS**  
 Color Grade **G**  
 Clarity Grade **VS 1**  
 Cut Grade **IDEAL**

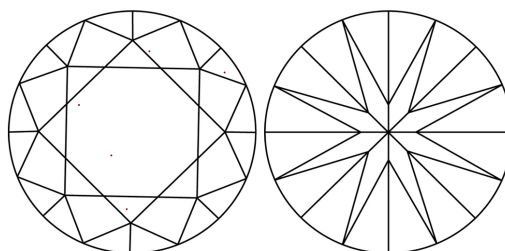
**ADDITIONAL GRADING INFORMATION**

Polish **EXCELLENT**  
 Symmetry **EXCELLENT**  
 Fluorescence **NONE**  
 Inscription(s) **LABGROWN IGI LG536207183**

Comments: HEARTS & ARROWS  
 This Laboratory Grown Diamond was created by  
 Chemical Vapor Deposition (CVD) growth process and  
 may include post-growth treatment.  
 Type IIa

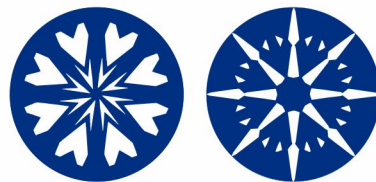


**CLARITY CHARACTERISTICS**



**KEY TO SYMBOLS**

Red symbols indicate internal characteristics.  
 Green symbols indicate external characteristics.

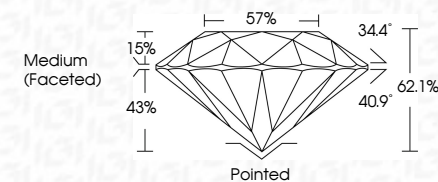


[www.igi.org](http://www.igi.org)

**GRADING SCALES**

COLOR GRADING SCALE	CL	NC	FT	VLT	LT	
	COLORLESS D-F	NEAR COLORLESS G-J	FAINT K-M	VERY LIGHT N-R	LIGHT S-Z	
CLARITY (10x) GRADING SCALE	FL	IF	VVS	VS	SI	I
	FLAWLESS INTERNALLY FLAWLESS	VERY VERY SLIGHTLY INCLUDED	VERY SLIGHTLY INCLUDED	SLIGHTLY INCLUDED		INCLUDED

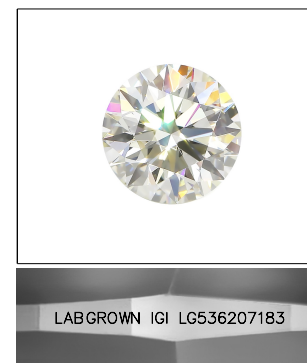
September 1, 2022  
 IGI Report Number **LG536207183**  
 Description **LABORATORY GROWN  
DIAMOND**  
 Shape and Cutting Style **ROUND BRILLIANT**  
 Measurements **8.47 - 8.50 X 5.27 MM**  
**GRADING RESULTS**  
 Carat Weight **2.35 CARATS**  
 Color Grade **G**  
 Clarity Grade **VS 1**  
 Cut Grade **IDEAL**



**ADDITIONAL GRADING INFORMATION**

Polish **EXCELLENT**  
 Symmetry **EXCELLENT**  
 Fluorescence **NONE**  
 Inscription(s) **LABGROWN IGI LG536207183**

Comments: HEARTS & ARROWS  
 This Laboratory Grown Diamond was created by  
 Chemical Vapor Deposition (CVD) growth process and  
 may include post-growth treatment.  
 Type IIa



**LASERSCRIBE<sup>SM</sup>**

Sample Image Used



**IGI**

September 1, 2022  
 IGI Report No **LG536207183**  
**ROUND BRILLIANT**  
 8.47 - 8.50 X 5.27 MM  
 Carat Weight **2.35 CARATS**  
 Color Grade **G**  
 Clarity Grade **VS 1**  
 Cut Grade **IDEAL**  
 Depth **62.1%**  
 Table **57%**  
 Girdle **Medium (Faceted)**  
 Culet **Pointed**  
 Polish **EXCELLENT**  
 Symmetry **EXCELLENT**  
 Fluorescence **NONE**  
 Inscription(s) **LABGROWN IGI LG536207183**  
 Comments: **HEARTS & ARROWS**  
 This Laboratory Grown Diamond was created by Chemical Vapor Deposition (CVD) growth process and may include post-growth treatment.  
 Type IIa