



ELECTRONIC COPY

LABORATORY GROWN DIAMOND REPORT

August 8, 2022
IGI Report Number LG536209809
Description LABORATORY GROWN DIAMOND
Shape and Cutting Style ROUND BRILLIANT
Measurements 8.46 - 8.51 X 5.29 MM

GRADING RESULTS

Carat Weight 2.37 CARATS
Color Grade FANCY VIVID PINK
Clarity Grade VS 1
Cut Grade EXCELLENT

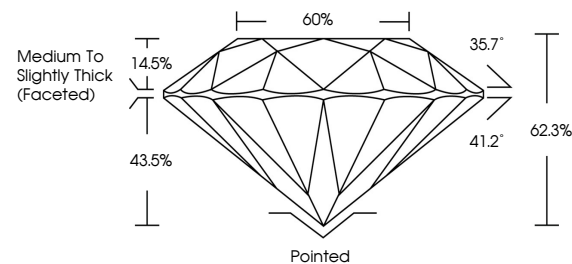
ADDITIONAL GRADING INFORMATION

Polish EXCELLENT
Symmetry EXCELLENT
Fluorescence STRONG
Inscription(s) LABGROWN IGI LG536209809

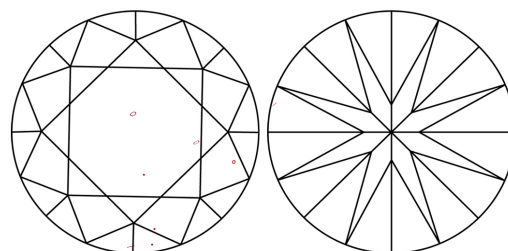
Comments: This Laboratory Grown Diamond was created by Chemical Vapor Deposition (CVD) growth process.
Indications of post-growth treatment.

LG536209809

PROPORTIONS



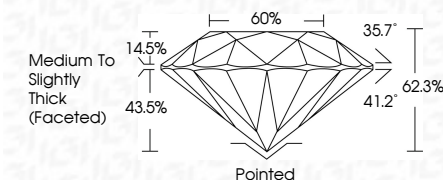
CLARITY CHARACTERISTICS



KEY TO SYMBOLS

Red symbols indicate internal characteristics.
Green symbols indicate external characteristics.

August 8, 2022
IGI Report Number LG536209809
Description LABORATORY GROWN DIAMOND
Shape and Cutting Style ROUND BRILLIANT
Measurements 8.46 - 8.51 X 5.29 MM
GRADING RESULTS
Carat Weight 2.37 CARATS
Color Grade FANCY VIVID PINK
Clarity Grade VS 1
Cut Grade EXCELLENT

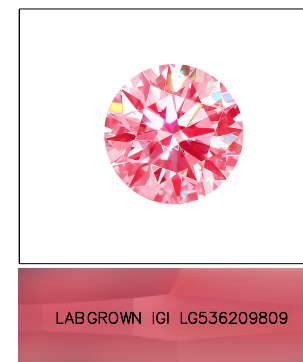


ADDITIONAL GRADING INFORMATION

Polish EXCELLENT
Symmetry EXCELLENT
Fluorescence STRONG
Inscription(s) LABGROWN IGI LG536209809
Comments: This Laboratory Grown Diamond was created by Chemical Vapor Deposition (CVD) growth process.
Indications of post-growth treatment.

GRADING SCALES

Table with 2 columns: COLOR GRADING SCALE and CLARITY (10x) GRADING SCALE. Rows include color grades (CL, NC, FT, VLT, LT) and clarity grades (FL, IF, VVS, VS, SI, I).



LABGROWN IGI LG536209809

LASERSCRIBE SM

Sample Image Used



August 8, 2022
IGI Report No LG536209809
ROUND BRILLIANT
8.46 - 8.51 X 5.29 MM
Carat Weight 2.37 CARATS
Color Grade FANCY VIVID PINK
Clarity Grade VS 1
Cut Grade EXCELLENT
Depth 62.3%
Table 60%
Girdle Medium To Slightly Thick (Faceted)
Culet Pointed
Polish EXCELLENT
Symmetry EXCELLENT
Fluorescence STRONG
Inscription(s) LABGROWN IGI LG536209809
Comments: This Laboratory Grown Diamond was created by Chemical Vapor Deposition (CVD) growth process.
Indications of post-growth treatment.