



ELECTRONIC COPY

LABORATORY GROWN DIAMOND REPORT

August 26, 2022
IGI Report Number LG536210015
Description LABORATORY GROWN DIAMOND
Shape and Cutting Style ROUND BRILLIANT
Measurements 8.11 - 8.19 X 4.80 MM

GRADING RESULTS

Carat Weight 1.98 CARAT
Color Grade FANCY LIGHT PINK
Clarity Grade SI 1
Cut Grade EXCELLENT

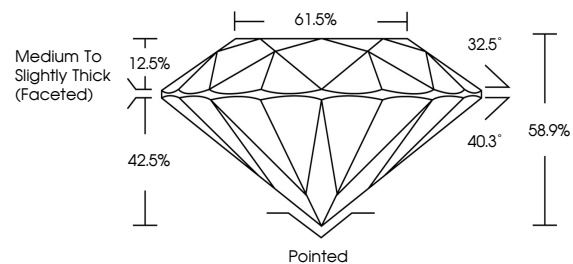
ADDITIONAL GRADING INFORMATION

Polish EXCELLENT
Symmetry EXCELLENT
Fluorescence SLIGHT
Inscription(s) LABGROWN IGI LG536210015

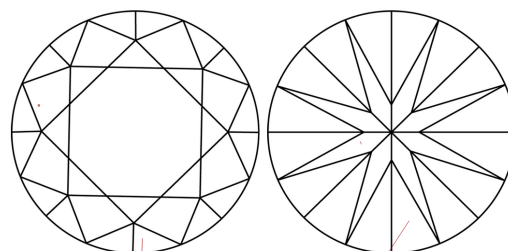
Comments: This Laboratory Grown Diamond was created by Chemical Vapor Deposition (CVD) growth process.
Indications of post-growth treatment.

LG536210015

PROPORTIONS



CLARITY CHARACTERISTICS



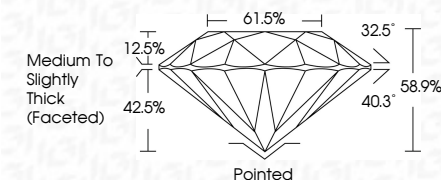
KEY TO SYMBOLS

Red symbols indicate internal characteristics.
Green symbols indicate external characteristics.

GRADING SCALES

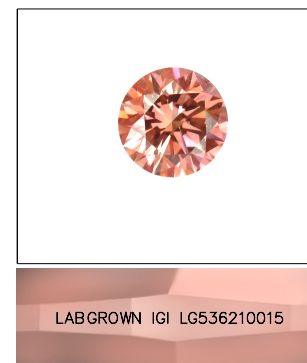
Table with 5 columns for Color Grading Scale (CL, NC, FT, VLT, LT) and 5 columns for Clarity (10x) Grading Scale (FL, IF, VVS, VS, SI, I).

August 26, 2022
IGI Report Number LG536210015
Description LABORATORY GROWN DIAMOND
Shape and Cutting Style ROUND BRILLIANT
Measurements 8.11 - 8.19 X 4.80 MM
GRADING RESULTS
Carat Weight 1.98 CARAT
Color Grade FANCY LIGHT PINK
Clarity Grade SI 1
Cut Grade EXCELLENT



ADDITIONAL GRADING INFORMATION

Polish EXCELLENT
Symmetry EXCELLENT
Fluorescence SLIGHT
Inscription(s) LABGROWN IGI LG536210015
Comments: This Laboratory Grown Diamond was created by Chemical Vapor Deposition (CVD) growth process.
Indications of post-growth treatment.



LASERSCRIBE SM
Sample Image Used



Summary of report details including date, report number, measurements, grading results, and additional information.