



**INTERNATIONAL  
GEMOLOGICAL  
INSTITUTE**

**ELECTRONIC COPY**

**LABORATORY GROWN  
DIAMOND REPORT**

**IGI LABORATORY GROWN  
DIAMOND ID REPORT**

August 29, 2022  
IGI Report Number **LG536210062**

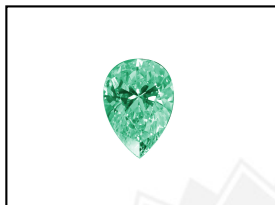
**LABORATORY GROWN DIAMOND REPORT**

**LG536210062**

**PEAR BRILLIANT**  
**8.61 X 5.40 X 3.29 MM**  
Carat Weight 0.90 CARAT  
Color Grade FANCY INTENSE GREENISH  
Clarity Grade VS 2  
Polish EXCELLENT  
Symmetry EXCELLENT  
Fluorescence NONE  
Inscription(s) LABGROWN IGI LG536210062

**IGI LABORATORY GROWN DIAMOND IDENTIFICATION REPORT**

August 29, 2022  
IGI Report Number LG536210062  
Description LABORATORY GROWN DIAMOND  
Shape and Cutting Style PEAR BRILLIANT  
Measurements 8.61 X 5.40 X 3.29 MM



Comments: This Laboratory Grown Diamond was created by Chemical Vapor Deposition (CVD) growth process. Indications of post-growth treatment.

**GRADING RESULTS**

Carat Weight 0.90 CARAT  
Color Grade FANCY INTENSE GREENISH  
Clarity Grade VS 2

**LASERSCRIBE<sup>SM</sup>**  
Sample Images Used



**ADDITIONAL GRADING INFORMATION**

Polish EXCELLENT  
Symmetry EXCELLENT  
Fluorescence NONE  
Inscription(s) LABGROWN IGI LG536210062

Comments: This Laboratory Grown Diamond was created by Chemical Vapor Deposition (CVD) growth process. Indications of post-growth treatment.

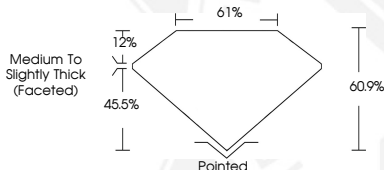
**IGI LABORATORY GROWN  
DIAMOND ID REPORT**

August 29, 2022  
IGI Report Number **LG536210062**

**PEAR BRILLIANT**  
**8.61 X 5.40 X 3.29 MM**

Carat Weight 0.90 CARAT  
Color Grade FANCY INTENSE GREENISH  
Clarity Grade VS 2  
Polish EXCELLENT  
Symmetry EXCELLENT  
Fluorescence NONE  
Inscription(s) LABGROWN IGI LG536210062

Comments: This Laboratory Grown Diamond was created by Chemical Vapor Deposition (CVD) growth process. Indications of post-growth treatment.



THIS DOCUMENT WAS PRODUCED WITH THE FOLLOWING SECURITY MEASURES: SPECIAL DOCUMENT PAPER, INK SCREENS, WATERMARK, BACKGROUND DESIGN, HOLOGRAM AND OTHER SECURITY FEATURES NOT LISTED AND DO EXCEED DOCUMENT SECURITY INDUSTRY GUIDELINES.

For terms & conditions and to verify this report, please visit [www.igi.org](http://www.igi.org)