



**INTERNATIONAL  
GEMOLOGICAL  
INSTITUTE**

**LABORATORY GROWN DIAMOND REPORT**

**IGI LABORATORY GROWN DIAMOND IDENTIFICATION REPORT**

July 21, 2022  
 IGI Report Number LG536211694  
 Description LABORATORY GROWN DIAMOND  
 Shape and Cutting Style PEAR BRILLIANT  
 Measurements 5.97 X 3.62 X 2.26 MM

**GRADING RESULTS**

Carat Weight 0.30 CARAT  
 Color Grade D  
 Clarity Grade VVS 1

**ADDITIONAL GRADING INFORMATION**

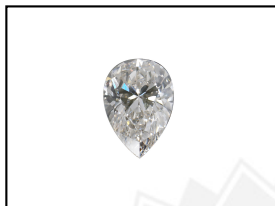
Polish VERY GOOD  
 Symmetry VERY GOOD  
 Fluorescence NONE  
 Inscription(s) LABGROWN IGI LG536211694

Comments: As Grown - No indication of post-growth treatment.  
 This Laboratory Grown Diamond was created by High Pressure High Temperature (HPHT) growth process.  
 Type II

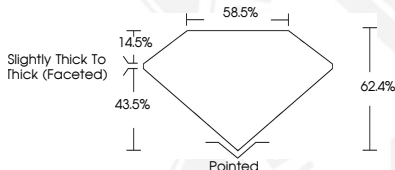
**ELECTRONIC COPY**

**LABORATORY GROWN  
DIAMOND REPORT**

**LG536211694**



**LASERSCRIBE<sup>SM</sup>**  
Sample Images Used



**IGI LABORATORY GROWN  
DIAMOND ID REPORT**

July 21, 2022  
 IGI Report Number **LG536211694**  
**PEAR BRILLIANT**  
**5.97 X 3.62 X 2.26 MM**  
 Carat Weight 0.30 CARAT  
 Color Grade D  
 Clarity Grade VVS 1  
 Polish VERY GOOD  
 Symmetry VERY GOOD  
 Fluorescence NONE  
 Inscription(s) LABGROWN IGI  
 LG536211694

Comments: As Grown - No indication of post-growth treatment.  
 This Laboratory Grown Diamond was created by High Pressure High Temperature (HPHT) growth process.  
 Type II

**IGI LABORATORY GROWN  
DIAMOND ID REPORT**

July 21, 2022  
 IGI Report Number **LG536211694**  
**PEAR BRILLIANT**  
**5.97 X 3.62 X 2.26 MM**  
 Carat Weight 0.30 CARAT  
 Color Grade D  
 Clarity Grade VVS 1  
 Polish VERY GOOD  
 Symmetry VERY GOOD  
 Fluorescence NONE  
 Inscription(s) LABGROWN IGI  
 LG536211694

Comments: As Grown - No indication of post-growth treatment.  
 This Laboratory Grown Diamond was created by High Pressure High Temperature (HPHT) growth process.  
 Type II

THIS DOCUMENT WAS PRODUCED WITH THE FOLLOWING SECURITY MEASURES: SPECIAL DOCUMENT PAPER, INK SCREENS, WATERMARK, BACKGROUND DESIGN, HOLOGRAM AND OTHER SECURITY FEATURES NOT LISTED AND DO EXCEED DOCUMENT SECURITY INDUSTRY GUIDELINES.

For terms & conditions and to verify this report, please visit [www.igi.org](http://www.igi.org)