



ELECTRONIC COPY

LABORATORY GROWN DIAMOND REPORT

June 28, 2022
 IGI Report Number **LG536268156**
 Description **LABORATORY GROWN
DIAMOND**
 Shape and Cutting Style **PEAR BRILLIANT**
 Measurements **9.09 X 5.62 X 3.56 MM**

GRADING RESULTS

Carat Weight **1.06 CARAT**
 Color Grade **G**
 Clarity Grade **VVS 1**

ADDITIONAL GRADING INFORMATION

Polish **EXCELLENT**
 Symmetry **EXCELLENT**
 Fluorescence **NONE**

Inscription(s) **LABGROWN IGI LG536268156**

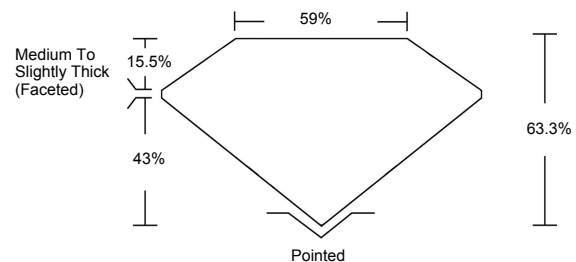
Comments: As Grown - No indication of post-growth treatment.

This Laboratory Grown Diamond was created by High Pressure High Temperature (HPHT) growth process.

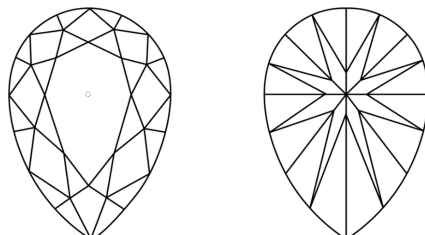
Type II
 Faint Blue

LG536268156

PROPORTIONS



CLARITY CHARACTERISTICS

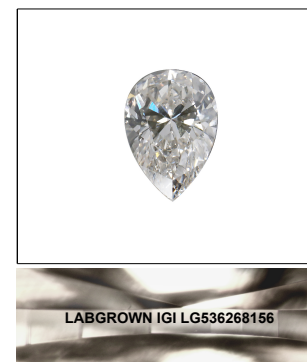


KEY TO SYMBOLS

Red symbols indicate internal characteristics.
 Green symbols indicate external characteristics.

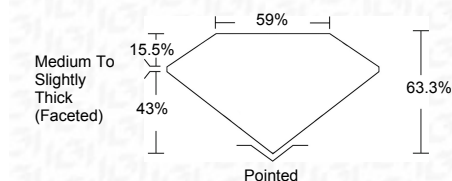
GRADING SCALES

COLOR GRADING SCALE	CL	NC	FT	VL	LT	
	COLORLESS D-F	NEAR COLORLESS G-J	FAINT K-M	VERY LIGHT N-R	LIGHT S-Z	
CLARITY (10x) GRADING SCALE	FL	IF	VVS	VS	SI	I
	FLAWLESS INTERNALLY FLAWLESS	VERY VERY SLIGHTLY INCLUDED	VERY SLIGHTLY INCLUDED	SLIGHTLY INCLUDED	INCLUDED	



LASERSCRIBESM
 Sample Image Used

June 28, 2022
 IGI Report Number **LG536268156**
 Description **LABORATORY GROWN
DIAMOND**
 Shape and Cutting Style **PEAR BRILLIANT**
 Measurements **9.09 X 5.62 X 3.56 MM**
GRADING RESULTS
 Carat Weight **1.06 CARAT**
 Color Grade **G**
 Clarity Grade **VVS 1**



ADDITIONAL GRADING INFORMATION

Polish **EXCELLENT**
 Symmetry **EXCELLENT**
 Fluorescence **NONE**

Inscription(s) **LABGROWN IGI LG536268156**

Comments: As Grown - No indication of post-growth treatment.
 This Laboratory Grown Diamond was created by High Pressure High Temperature (HPHT) growth process.
 Type II
 Faint Blue



IGI



June 28, 2022
 IGI Report No. **LG536268156**
PEAR BRILLIANT
 9.09 X 5.62 X 3.56 MM
 Carat Weight **1.06 CARAT**
 Color Grade **G**
 Clarity Grade **VVS 1**
 Depth **63.3%**
 Table **59%**
 Girdle **Medium To Slightly Thick (Faceted)**
 Culet **Pointed**
 Polish **EXCELLENT**
 Symmetry **EXCELLENT**
 Fluorescence **NONE**
 Inscription(s) **LABGROWN IGI LG536268156**
 Comments: **As Grown - No indication of post-growth treatment. This Laboratory Grown Diamond was created by High Pressure High Temperature (HPHT) growth process. Type II Faint Blue**