



**INTERNATIONAL
GEMOLOGICAL
INSTITUTE**

ELECTRONIC COPY

**LABORATORY GROWN
DIAMOND REPORT**

**IGI LABORATORY GROWN
DIAMOND ID REPORT**

July 7, 2022
IGI Report Number **LG536277906**
**CUT CORNERED RECTANGULAR
MODIFIED BRILLIANT**
6.45 X 4.78 X 3.23 MM
Carat Weight 0.88 CARAT
Color Grade F
Clarity Grade VS 1
Polish EXCELLENT
Symmetry EXCELLENT
Fluorescence NONE
Inscription(s) LABGROWN IGI
LG536277906

LABORATORY GROWN DIAMOND REPORT

IGI LABORATORY GROWN DIAMOND IDENTIFICATION REPORT

July 7, 2022
IGI Report Number LG536277906
Description LABORATORY GROWN DIAMOND
Shape and Cutting Style CUT CORNERED RECTANGULAR MODIFIED
BRILLIANT
Measurements 6.45 X 4.78 X 3.23 MM

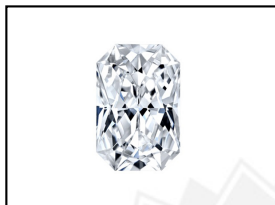
GRADING RESULTS

Carat Weight 0.88 CARAT
Color Grade F
Clarity Grade VS 1

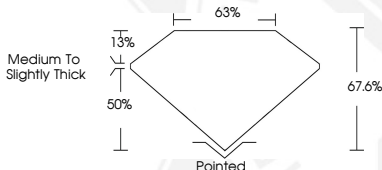
ADDITIONAL GRADING INFORMATION

Polish EXCELLENT
Symmetry EXCELLENT
Fluorescence NONE
Inscription(s) LABGROWN IGI LG536277906

Comments: This Laboratory Grown Diamond was created by
Chemical Vapor Deposition (CVD) growth process and may include
post-growth treatment.
Type IIa



LASERSCRIBESM
Sample Images Used



Comments: This Laboratory Grown
Diamond was created by
Chemical Vapor Deposition (CVD)
growth process and may include
post-growth treatment.
Type IIa

**IGI LABORATORY GROWN
DIAMOND ID REPORT**

July 7, 2022
IGI Report Number **LG536277906**
**CUT CORNERED RECTANGULAR
MODIFIED BRILLIANT**
6.45 X 4.78 X 3.23 MM
Carat Weight 0.88 CARAT
Color Grade F
Clarity Grade VS 1
Polish EXCELLENT
Symmetry EXCELLENT
Fluorescence NONE
Inscription(s) LABGROWN IGI
LG536277906

Comments: This Laboratory Grown
Diamond was created by
Chemical Vapor Deposition (CVD)
growth process and may include
post-growth treatment.
Type IIa

THIS DOCUMENT WAS PRODUCED WITH THE FOLLOWING SECURITY MEASURES: SPECIAL DOCUMENT PAPER, INK SCREENS, WATERMARK, BACKGROUND DESIGN, HOLOGRAM AND OTHER SECURITY FEATURES NOT LISTED AND DO EXCEED DOCUMENT SECURITY INDUSTRY GUIDELINES.

For terms & conditions and to verify this report, please visit www.igi.org