



**ELECTRONIC COPY**

## LABORATORY GROWN DIAMOND REPORT

July 2, 2022	
IGI Report Number	LG536288279
Description	LABORATORY GROWN DIAMOND
Shape and Cutting Style	ROUND BRILLIANT
Measurements	9.21 - 9.27 X 5.77 MM

## GRADING RESULTS

Carat Weight	3.06 CARATS
Color Grade	E
Clarity Grade	VS 2
Cut Grade	IDEAL

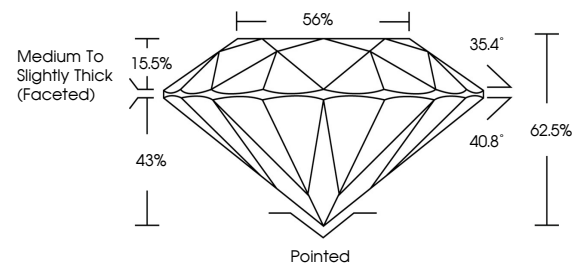
### ADDITIONAL GRADING INFORMATION

Polish	EXCELLENT
Symmetry	EXCELLENT
Fluorescence	NONE
Inscription(s)	LABGROWN IG LG536288279

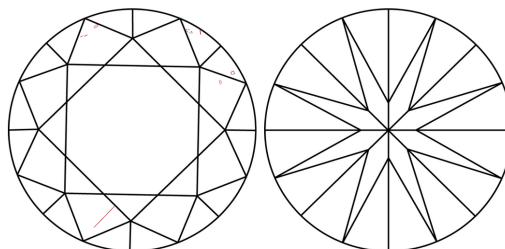
Inscription(s)	<b>LABGROWN IGI LG536288279</b>
Comments:	As Grown - No indication of post-growth treatment.
	This Laboratory Grown Diamond was created by High Pressure High Temperature (HPHT) growth process.
Type II	

LG536288279

## PROPORTIONS



## CLARITY CHARACTERISTICS



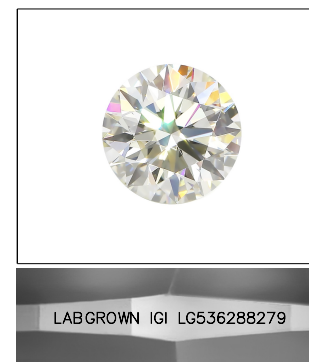
### KEY TO SYMBOLS

Red symbols indicate internal characteristics.  
Green symbols indicate external characteristics.

LABORATORY GROWN  
DIAMOND REPORT

## GRADING SCALES

COLOR GRADING SCALE	CL		NC	FT	VL	LT
	COLORLESS D-F		NEAR COLORLESS G-J	FAINT K-M	VERY LIGHT N-R	LIGHT S-Z
CLARITY (10x) GRADING SCALE	FL	IF	VVS	VS	SI	I
	FLAWLESS INTERNALLY FLAWLESS		VERY VERY SLIGHTLY INCLUDED	VERY SLIGHTLY INCLUDED	SLIGHTLY INCLUDED	INCLUDED

LASERSCRIBE<sup>SM</sup>

Sample Image Used



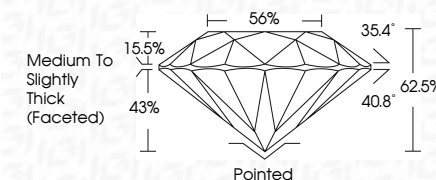
© IGI 2020, International Gemological Institute

FD - 10 20

**www.igi.org**

## LABORATORY GROWN DIAMOND REPORT

July 2, 2022	
IGI Report Number	LG536288279
Description	LABORATORY GROWN DIAMOND
Shape and Cutting Style	ROUND BRILLIANT
Measurements	9.21 - 9.27 X 5.77 MM
<b>GRADING RESULTS</b>	
Carat Weight	3.06 CARATS
Color Grade	E
Clarity Grade	VS 2
Cut Grade	IDEAL



### ADDITIONAL GRADING INFORMATION

Polish	EXCELLENT
Symmetry	EXCELLENT
Fluorescence	NONE
Inscription(s)	LABGROWN IGI LG536288279
Comments: As Grown - No indication of post-growth treatment.	
This Laboratory Grown Diamond was created by High Pressure High Temperature (HPHT) growth process.	
Type II	



July 2, 2022	GI Report No. LG53028279	
	ROUND BRILLIANT	
	1.21 - 1.21 X 5.77 MM	
	Carat Weight	3.06 CARATS
	Color Grade	E
	Clarity Grade	VS 2
	Cut Grade	IDEAL
	Depth	62.5%
	Table	55%
	Girdle	Medium to slightly Thick (Faceted)
	Culet	Pointed
	Polish	EXCELLENT
	Symmetry	EXCELLENT
	Fluorescence	NONE
	Inscription(s)	LABGROWN IG1 LG53028279
	Comments:	As Group - No indication of post-growth treatment. This Laboratory Grown Diamond was created by High Pressure High Temperature (HPHT) growth process.