



ELECTRONIC COPY

LABORATORY GROWN DIAMOND REPORT

July 1, 2022	
IGI Report Number	LG536288346
Description	LABORATORY GROWN DIAMOND
Shape and Cutting Style	ROUND BRILLIANT
Measurements	8.99 - 9.05 X 5.54 MM

GRADING RESULTS

Carat Weight	2.76 CARATS
Color Grade	D
Clarity Grade	VS 2
Cut Grade	IDEAL

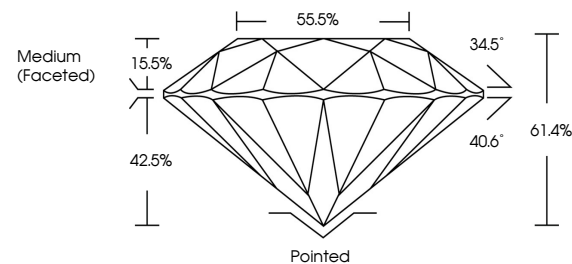
ADDITIONAL GRADING INFORMATION

Polish	EXCELLENT
Symmetry	EXCELLENT
Fluorescence	NONE
Inscription(s)	LABGROWN IG LG536288346

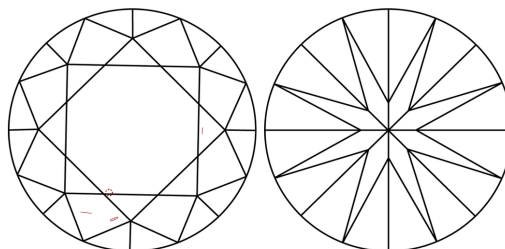
Comments: HEARTS & ARROWS
As Grown - No indication of post-growth treatment.
This Laboratory Grown Diamond was created by High
Pressure High Temperature (HPHT) growth process.
Type II

LG536288346

PROPORTIONS



CLARITY CHARACTERISTICS



KEY TO SYMBOLS

Red symbols indicate internal characteristics.
Green symbols indicate external characteristics.

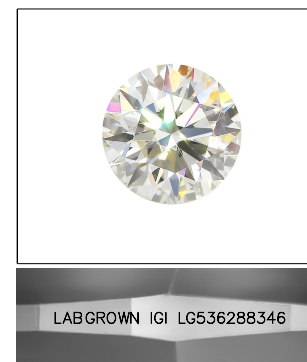


www.igi.org

LABORATORY GROWN
DIAMOND REPORT

GRADING SCALES

COLOR GRADING SCALE	CL		NC	FT	VLT	LT
	COLORLESS D-F		NEAR COLORLESS G-J	FAINT K-M	VERY LIGHT N-R	LIGHT S-Z
CLARITY (10x) GRADING SCALE	FL	IF	VVS	VS	SI	I
	FLAWLESS INTERNALLY FLAWLESS		VERY VERY SLIGHTLY INCLUDED	VERY SLIGHTLY INCLUDED	SLIGHTLY INCLUDED	INCLUDED

LASERSCRIBESM

Sample Image Used

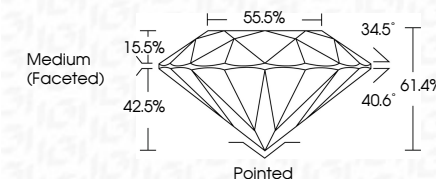


© IGI 2020, International Gemological Institute

FD - 10 20

LABORATORY GROWN DIAMOND REPORT

July 1, 2022	
IGI Report Number	LG536288346
Description	LABORATORY GROWN DIAMOND
Shape and Cutting Style	ROUND BRILLIANT
Measurements	8.99 - 9.05 X 5.54 MM
GRADING RESULTS	
Carat Weight	2.76 CARATS
Color Grade	D
Clarity Grade	VS 2
Cut Grade	IDEAL



ADDITIONAL GRADING INFORMATION

Polish	EXCELLENT
Symmetry	EXCELLENT
Fluorescence	NONE
Inscription(s)	LABGROWN IGI LG536288346

Comments: HEARTS & ARROWS
As Grown - No indication of post-growth treatment.
This Laboratory Grown Diamond was created by High
Pressure High Temperature (HPHT) growth process.
Type II



<p> JULY 1, 2022 GI Report No. LG53289346 ROUND BRILLIANT 9.99 - 9.05 X 5.54 MM </p>	<p> 2.76 CARATS D </p>	<p> VS 2 IDEAL 61.4% 55.5% Medium Faceted </p>	<p> Polished EXCELLENT EXCELLENT NONE LAB-GROWN 1st LG53289346 </p>	<p> Comments: HEARTS & ARROWS As Grown - No indication of post-growth treatment. The Last Party Given Diamond was the Last Party Given. Review High Temperature (HPH) growth process. Type II </p>
---	---	---	--	---