



ELECTRONIC COPY

LABORATORY GROWN DIAMOND REPORT

July 14, 2022
IGI Report Number LG536294574
Description LABORATORY GROWN DIAMOND
Shape and Cutting Style ROUND BRILLIANT
Measurements 8.76 - 8.78 X 5.44 MM

GRADING RESULTS

Carat Weight 2.57 CARATS
Color Grade G
Clarity Grade VS 1
Cut Grade IDEAL

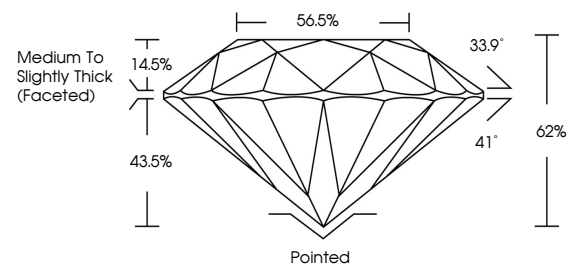
ADDITIONAL GRADING INFORMATION

Polish EXCELLENT
Symmetry EXCELLENT
Fluorescence NONE
Inscription(s) LABGROWN IGI LG536294574

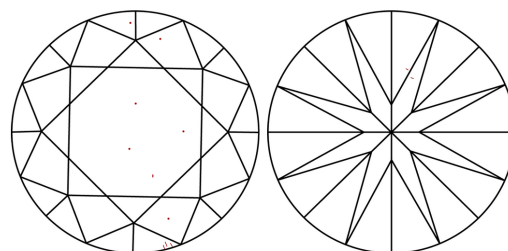
Comments: This Laboratory Grown Diamond was created by Chemical Vapor Deposition (CVD) growth process and may include post-growth treatment. Type IIa

LG536294574

PROPORTIONS



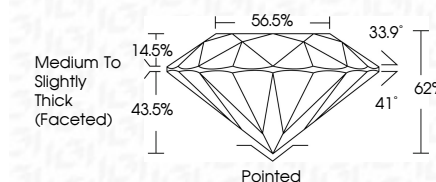
CLARITY CHARACTERISTICS



KEY TO SYMBOLS

Red symbols indicate internal characteristics.
Green symbols indicate external characteristics.

July 14, 2022
IGI Report Number LG536294574
Description LABORATORY GROWN DIAMOND
Shape and Cutting Style ROUND BRILLIANT
Measurements 8.76 - 8.78 X 5.44 MM
GRADING RESULTS
Carat Weight 2.57 CARATS
Color Grade G
Clarity Grade VS 1
Cut Grade IDEAL



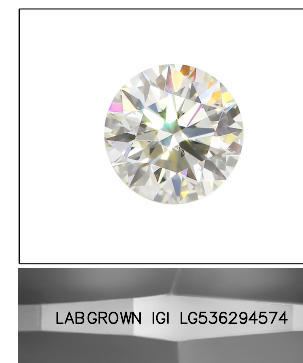
ADDITIONAL GRADING INFORMATION

Polish EXCELLENT
Symmetry EXCELLENT
Fluorescence NONE
Inscription(s) LABGROWN IGI LG536294574

Comments: This Laboratory Grown Diamond was created by Chemical Vapor Deposition (CVD) growth process and may include post-growth treatment. Type IIa

GRADING SCALES

Table showing color grading scale (CL to LT) and clarity (10x) grading scale (FL to I).



LABGROWN IGI LG536294574

LASERSCRIBE SM

Sample Image Used



Summary of report details including date, report number, measurements, and grading results.

Comments: This Laboratory Grown Diamond was created by Chemical Vapor Deposition (CVD) growth process and may include post-growth treatment. Type IIa