



ELECTRONIC COPY

LABORATORY GROWN DIAMOND REPORT

July 25, 2022
 IGI Report Number **LG536296802**
 Description **LABORATORY GROWN
DIAMOND**
 Shape and Cutting Style **CUT CORNERED RECTANGULAR
MODIFIED BRILLIANT**
 Measurements **8.12 X 5.51 X 3.80 MM**

GRADING RESULTS

Carat Weight **1.51 CARAT**
 Color Grade **H**
 Clarity Grade **VS 1**

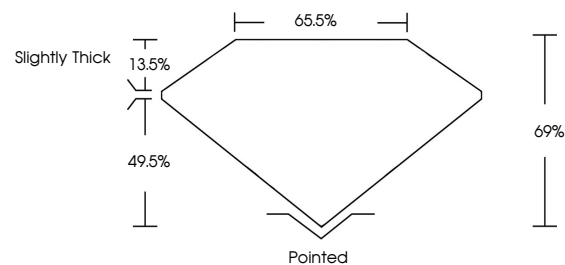
ADDITIONAL GRADING INFORMATION

Polish **EXCELLENT**
 Symmetry **EXCELLENT**
 Fluorescence **NONE**
 Inscription(s) **LABGROWN IGI LG536296802**

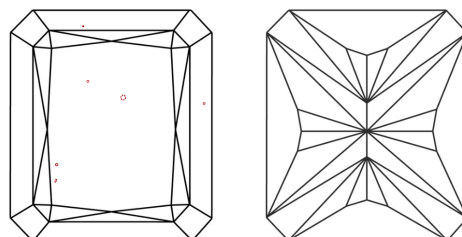
Comments: This Laboratory Grown Diamond was created by Chemical Vapor Deposition (CVD) growth process and may include post-growth treatment. Type IIa

LG536296802

PROPORTIONS



CLARITY CHARACTERISTICS



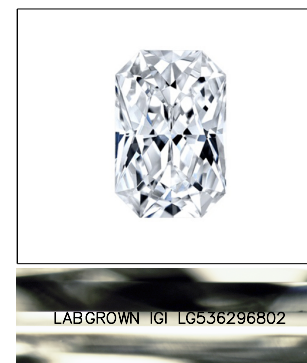
KEY TO SYMBOLS

Red symbols indicate internal characteristics.
 Green symbols indicate external characteristics.

**LABORATORY GROWN
DIAMOND REPORT**

GRADING SCALES

COLOR GRADING SCALE	CL	NC	FT	VLT	LT	
	COLORLESS D-F	NEAR COLORLESS G-J	FAINT K-M	VERY LIGHT N-R	LIGHT S-Z	
CLARITY (10x) GRADING SCALE	FL	IF	VVS	VS	SI	I
	FLAWLESS INTERNALLY FLAWLESS	VERY VERY SLIGHTLY INCLUDED	VERY SLIGHTLY INCLUDED	SLIGHTLY INCLUDED	INCLUDED	



LASERSCRIBESM

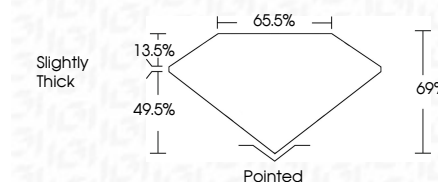
Sample Image Used

LABORATORY GROWN DIAMOND REPORT

July 25, 2022
 IGI Report Number **LG536296802**
 Description **LABORATORY GROWN
DIAMOND**
 Shape and Cutting Style **CUT CORNERED
RECTANGULAR MODIFIED
BRILLIANT**
 Measurements **8.12 X 5.51 X 3.80 MM**

GRADING RESULTS

Carat Weight **1.51 CARAT**
 Color Grade **H**
 Clarity Grade **VS 1**



ADDITIONAL GRADING INFORMATION

Polish **EXCELLENT**
 Symmetry **EXCELLENT**
 Fluorescence **NONE**
 Inscription(s) **LABGROWN IGI LG536296802**

Comments: This Laboratory Grown Diamond was created by Chemical Vapor Deposition (CVD) growth process and may include post-growth treatment. Type IIa



IGI

July 25, 2022	IGI Report No LG536296802	1.51 CARAT	H	Pointed
CUT CORNERED RECT. MODIFIED	8.12 X 5.51 X 3.80 MM	VS 1	69%	EXCELLENT
Carat Weight	Color Grade	Depth	65.5%	EXCELLENT
1.51 CARAT	Color Grade	Table	Slightly Thick	NONE
VS 1	Clarity Grade	Grade		LABGROWN IGI
69%	Color Grade			LG536296802
65.5%	Clarity Grade			Comments:
Slightly Thick	Culet			The Laboratory Grown Diamond was
Pointed	Polish			created by Chemical Vapor Deposition
EXCELLENT	Symmetry			(CVD) growth process and may include
EXCELLENT	Fluorescence			post-growth treatment.
NONE	Inscription(s)			Type IIa
LABGROWN IGI				
LG536296802				