



ELECTRONIC COPY

LABORATORY GROWN DIAMOND REPORT

July 16, 2022
IGI Report Number LG537214685
Description LABORATORY GROWN DIAMOND
Shape and Cutting Style ROUND BRILLIANT
Measurements 7.76 - 7.79 X 4.74 MM

GRADING RESULTS

Carat Weight 1.77 CARAT
Color Grade E
Clarity Grade VS 1
Cut Grade IDEAL

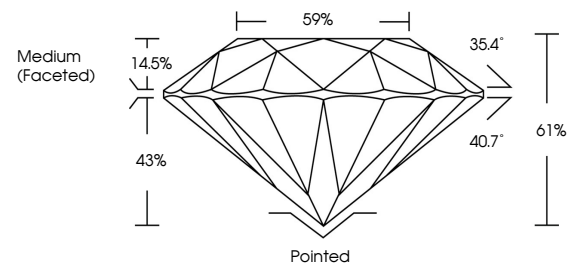
ADDITIONAL GRADING INFORMATION

Polish EXCELLENT
Symmetry EXCELLENT
Fluorescence NONE
Inscription(s) LABGROWN IGI LG537214685

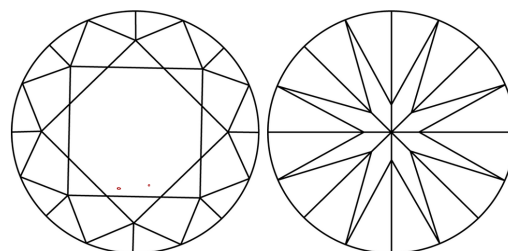
Comments: As Grown - No indication of post-growth treatment. This Laboratory Grown Diamond was created by High Pressure High Temperature (HPHT) growth process. Type II

LG537214685

PROPORTIONS



CLARITY CHARACTERISTICS



KEY TO SYMBOLS

Red symbols indicate internal characteristics. Green symbols indicate external characteristics.

July 16, 2022
IGI Report Number LG537214685
Description LABORATORY GROWN DIAMOND
Shape and Cutting Style ROUND BRILLIANT
Measurements 7.76 - 7.79 X 4.74 MM

GRADING RESULTS

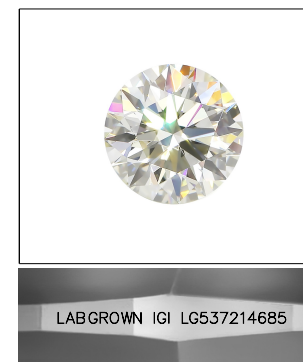
Carat Weight 1.77 CARAT
Color Grade E
Clarity Grade VS 1
Cut Grade IDEAL

ADDITIONAL GRADING INFORMATION

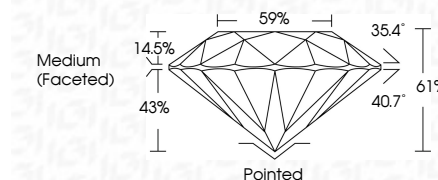
Polish EXCELLENT
Symmetry EXCELLENT
Fluorescence NONE
Inscription(s) LABGROWN IGI LG537214685
Comments: As Grown - No indication of post-growth treatment. This Laboratory Grown Diamond was created by High Pressure High Temperature (HPHT) growth process. Type II

GRADING SCALES

Table with 2 rows and 5 columns showing color and clarity grading scales from CL to LT and FL to I.



LASERSCRIBE SM Sample Image Used



July 16, 2022
IGI Report No LG537214685
ROUND BRILLIANT
7.76 - 7.79 X 4.74 MM
Carat Weight 1.77 CARAT
Color Grade E
Clarity Grade VS 1
Cut Grade IDEAL
Depth 61%
Table 59%
Girdle Medium (Faceted)
Culet Pointed
Polish EXCELLENT
Symmetry EXCELLENT
Fluorescence NONE
Inscription(s) LABGROWN IGI LG537214685
Comments: As Grown - No indication of post-growth treatment. This Laboratory Grown Diamond was created by High Pressure High Temperature (HPHT) growth process. Type II