



ELECTRONIC COPY

LABORATORY GROWN DIAMOND REPORT

July 7, 2022	
IGI Report Number	LG537215993
Description	LABORATORY GROWN DIAMOND
Shape and Cutting Style	CUT CORNERED RECTANGULAR MODIFIED BRILLIANT
Measurements	8.39 X 5.66 X 3.80 MM

GRADING RESULTS

Carat Weight	1.56 CARAT
Color Grade	E
Clarity Grade	SI 1

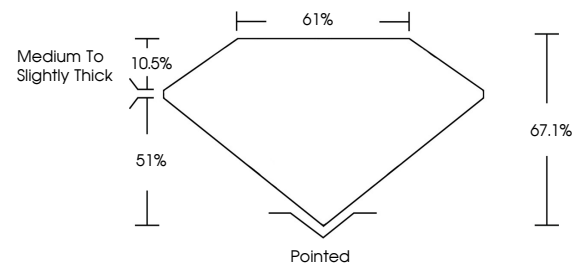
ADDITIONAL GRADING INFORMATION

Polish	EXCELLENT
Symmetry	EXCELLENT
Fluorescence	NONE
Inscription(s)	LABGROWN IGI LG537215993

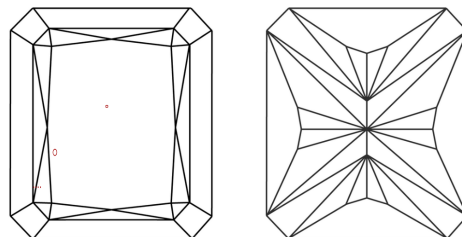
Comments: This Laboratory Grown Diamond was created by Chemical Vapor Deposition (CVD) growth process and may include post-growth treatment.
Type IIa

LG537215993

PROPORTIONS



CLARITY CHARACTERISTICS

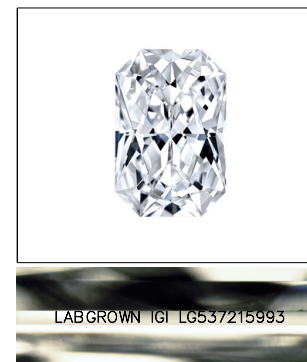


KEY TO SYMBOLS

Red symbols indicate internal characteristics.
Green symbols indicate external characteristics.

GRADING SCALES

COLOR GRADING SCALE	CL		NC		FT		VLT		LT	
	COLORLESS D-F		NEAR COLORLESS G-J		FAINT K-M		VERY LIGHT N-R		LIGHT S-Z	
CLARITY (10x) GRADING SCALE	FL IF		VVS		VS		SI		I	
	FLAWLESS INTERNALLY FLAWLESS		VERY VERY SLIGHTLY INCLUDED		VERY SLIGHTLY INCLUDED		SLIGHTLY INCLUDED		INCLUDED	

LASERSCRIBESM

Sample Image Used



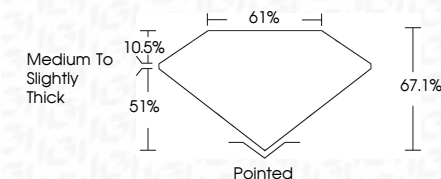
© IGI 2020, International Gemological Institute

FD - 10 20

www.igi.org

LABORATORY GROWN DIAMOND REPORT

July 7, 2022	
IGI Report Number	LG537215993
Description	LABORATORY GROWN DIAMOND
Shape and Cutting Style	CUT CORNERED RECTANGULAR MODIFIED BRILLIANT
Measurements	8.39 X 5.66 X 3.80 MM
GRADING RESULTS	
Carat Weight	1.56 CARAT
Color Grade	E
Clarity Grade	SI 1



ADDITIONAL GRADING INFORMATION

Polish	EXCELLENT
Symmetry	EXCELLENT
Fluorescence	NONE
Inscription(s)	LABGROWN IGI LG537215993

Comments: This Laboratory Grown Diamond was created by Chemical Vapor Deposition (CVD) growth process and may include post-growth treatment.
Type IIa



July 7, 2022	GI Report No. LG537219993	1.56 CARAT
CLUTTERED	CLUTTERED RECT. MODIFIED	E
13.59 X 5.64 X 3.80 MM		SI 1
		67.1%
		67.1%
		Medium To Slightly Thick
		Portined
		EXCELLENT
		EXCELLENT
		NONE
		LABGROWN IGI
		LG537219993
		Comments:
		This Laboratory Grown Diamond was produced using a high pressure high temperature (HPHT) growth process and may include post-growth treatment.
		Type IIA