



ELECTRONIC COPY

LABORATORY GROWN DIAMOND REPORT

July 9, 2022
IGI Report Number LG537224610
Description LABORATORY GROWN DIAMOND
Shape and Cutting Style ROUND BRILLIANT
Measurements 10.67 - 10.72 X 6.64 MM

GRADING RESULTS

Carat Weight 4.70 CARATS
Color Grade H
Clarity Grade VS 1
Cut Grade IDEAL

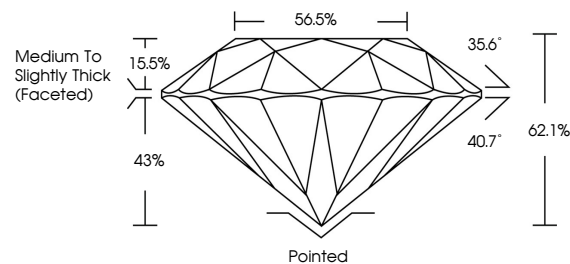
ADDITIONAL GRADING INFORMATION

Polish EXCELLENT
Symmetry EXCELLENT
Fluorescence NONE
Inscription(s) LABGROWN IGI LG537224610

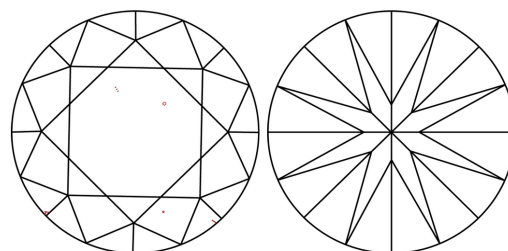
Comments: HEARTS & ARROWS
This Laboratory Grown Diamond was created by Chemical Vapor Deposition (CVD) growth process and may include post-growth treatment.
Type IIa

LG537224610

PROPORTIONS

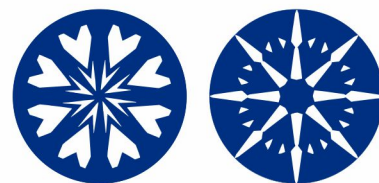


CLARITY CHARACTERISTICS



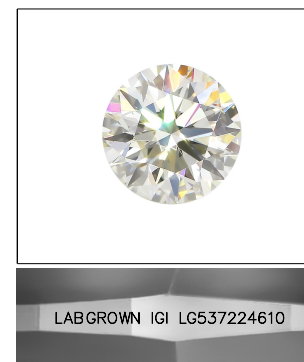
KEY TO SYMBOLS

Red symbols indicate internal characteristics.
Green symbols indicate external characteristics.



GRADING SCALES

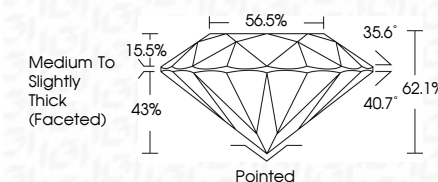
Table showing color grading scales (CL, NC, FT, VLT, LT) and clarity (10x) grading scales (FL, IF, VVS, VS, SI, I).



LASERSCRIBE SM

Sample Image Used

July 9, 2022
IGI Report Number LG537224610
Description LABORATORY GROWN DIAMOND
Shape and Cutting Style ROUND BRILLIANT
Measurements 10.67 - 10.72 X 6.64 MM
GRADING RESULTS
Carat Weight 4.70 CARATS
Color Grade H
Clarity Grade VS 1
Cut Grade IDEAL



ADDITIONAL GRADING INFORMATION

Polish EXCELLENT
Symmetry EXCELLENT
Fluorescence NONE
Inscription(s) LABGROWN IGI LG537224610

Comments: HEARTS & ARROWS
This Laboratory Grown Diamond was created by Chemical Vapor Deposition (CVD) growth process and may include post-growth treatment.
Type IIa



IGI

July 9, 2022
IGI Report No LG537224610
ROUND BRILLIANT
Carat Weight 4.70 CARATS
Color Grade H
Clarity Grade VS 1
Cut Grade IDEAL
Depth 62.1%
Table 56.5%
Grade Medium To Slightly Thick (Faceted)
Culet Pointed
Polish EXCELLENT
Symmetry EXCELLENT
Fluorescence NONE
Inscription(s) LABGROWN IGI LG537224610
Comments: HEARTS & ARROWS
This Laboratory Grown Diamond was created by Chemical Vapor Deposition (CVD) growth process and may include post-growth treatment.
Type IIa

