



**INTERNATIONAL
GEMOLOGICAL
INSTITUTE**

ELECTRONIC COPY

**LABORATORY GROWN
DIAMOND REPORT**

**IGI LABORATORY GROWN
DIAMOND ID REPORT**

July 11, 2022
IGI Report Number **LG537239450**

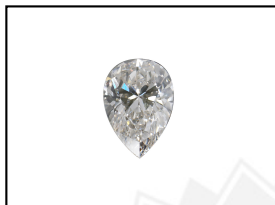
LABORATORY GROWN DIAMOND REPORT

LG537239450

PEAR BRILLIANT
7.57 X 4.79 X 2.91 MM
Carat Weight 0.63 CARAT
Color Grade E
Clarity Grade I.F.
Polish VERY GOOD
Symmetry VERY GOOD
Fluorescence NONE
Inscription(s) LABGROWN IGI
LG537239450

IGI LABORATORY GROWN DIAMOND IDENTIFICATION REPORT

July 11, 2022
IGI Report Number LG537239450
Description LABORATORY GROWN DIAMOND
Shape and Cutting Style PEAR BRILLIANT
Measurements 7.57 X 4.79 X 2.91 MM



Comments: This Laboratory Grown Diamond was created by Chemical Vapor Deposition (CVD) growth process and may include post-growth treatment. Type Ila

GRADING RESULTS

Carat Weight 0.63 CARAT
Color Grade E
Clarity Grade INTERNALLY FLAWLESS

LASERSCRIBESM
Sample Images Used



ADDITIONAL GRADING INFORMATION

Polish VERY GOOD
Symmetry VERY GOOD
Fluorescence NONE
Inscription(s) LABGROWN IGI LG537239450

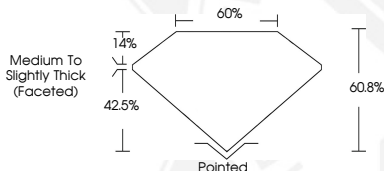
**IGI LABORATORY GROWN
DIAMOND ID REPORT**

July 11, 2022
IGI Report Number **LG537239450**

Comments: This Laboratory Grown Diamond was created by Chemical Vapor Deposition (CVD) growth process and may include post-growth treatment. Type Ila

PEAR BRILLIANT
7.57 X 4.79 X 2.91 MM
Carat Weight 0.63 CARAT
Color Grade E
Clarity Grade I.F.
Polish VERY GOOD
Symmetry VERY GOOD
Fluorescence NONE
Inscription(s) LABGROWN IGI
LG537239450

Comments: This Laboratory Grown Diamond was created by Chemical Vapor Deposition (CVD) growth process and may include post-growth treatment. Type Ila



THIS DOCUMENT WAS PRODUCED WITH THE FOLLOWING SECURITY MEASURES: SPECIAL DOCUMENT PAPER, INK SCREENS, WATERMARK, BACKGROUND DESIGN, HOLOGRAM AND OTHER SECURITY FEATURES NOT LISTED AND DO EXCEED DOCUMENT SECURITY INDUSTRY GUIDELINES.

For terms & conditions and to verify this report, please visit www.igi.org