



ELECTRONIC COPY

LABORATORY GROWN DIAMOND REPORT

July 11, 2022
 IGI Report Number **LG537240063**
 Description **LABORATORY GROWN
DIAMOND**
 Shape and Cutting Style **OVAL BRILLIANT**
 Measurements **11.05 X 7.85 X 4.89 MM**

GRADING RESULTS

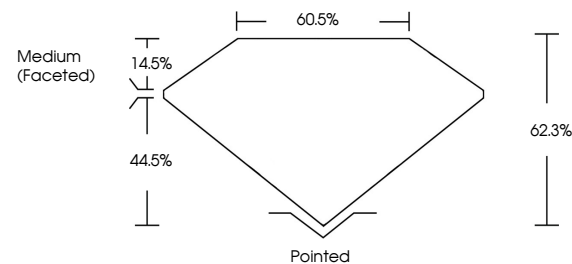
Carat Weight **2.62 CARATS**
 Color Grade **H**
 Clarity Grade **VVS 2**

ADDITIONAL GRADING INFORMATION

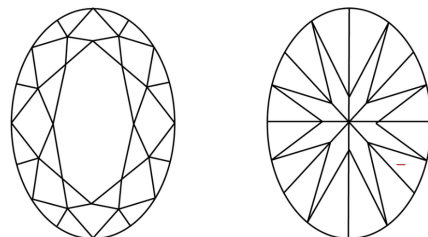
Polish **EXCELLENT**
 Symmetry **EXCELLENT**
 Fluorescence **NONE**
 Inscription(s) **LABGROWN IGI LG537240063**
 Comments: This Laboratory Grown Diamond was created by Chemical Vapor Deposition (CVD) growth process and may include post-growth treatment. Type IIa

LG537240063

PROPORTIONS



CLARITY CHARACTERISTICS

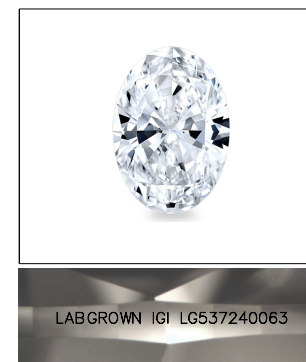


KEY TO SYMBOLS

Red symbols indicate internal characteristics.
 Green symbols indicate external characteristics.

GRADING SCALES

COLOR GRADING SCALE	CL	NC	FT	VLT	LT	
	COLORLESS D-F	NEAR COLORLESS G-J	FAINT K-M	VERY LIGHT N-R	LIGHT S-Z	
CLARITY (10x) GRADING SCALE	FL	IF	VVS	VS	SI	I
	FLAWLESS INTERNALLY FLAWLESS	VERY VERY SLIGHTLY INCLUDED	VERY SLIGHTLY INCLUDED	SLIGHTLY INCLUDED	INCLUDED	

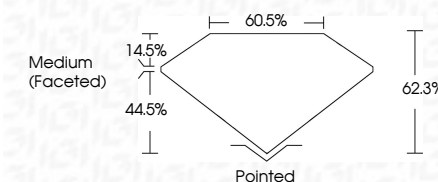


LABGROWN IGI LG537240063

LASERSCRIBESM

Sample Image Used

July 11, 2022
 IGI Report Number **LG537240063**
 Description **LABORATORY GROWN
DIAMOND**
 Shape and Cutting Style **OVAL BRILLIANT**
 Measurements **11.05 X 7.85 X 4.89 MM**
GRADING RESULTS
 Carat Weight **2.62 CARATS**
 Color Grade **H**
 Clarity Grade **VVS 2**



ADDITIONAL GRADING INFORMATION

Polish **EXCELLENT**
 Symmetry **EXCELLENT**
 Fluorescence **NONE**
 Inscription(s) **LABGROWN IGI LG537240063**
 Comments: This Laboratory Grown Diamond was created by Chemical Vapor Deposition (CVD) growth process and may include post-growth treatment. Type IIa



IGI

July 11, 2022	IGI Report No LG537240063	2.62 CARATS	H	Pointed
OVAL BRILLIANT	11.05 X 7.85 X 4.89 MM	VVS 2	62.3%	EXCELLENT
Carat Weight		60.5%		EXCELLENT
Color Grade		Medium (Faceted)		NONE
Clarity Grade		LABGROWN IGI		LG537240063
Depth		Comments:		
Table				
Grade				
Culet				
Polish				
Symmetry				
Fluorescence				
Inscription(s)				
Comments:				

The Laboratory Grown Diamond was created by Chemical Vapor Deposition (CVD) growth process and may include post-growth treatment. Type IIa