



ELECTRONIC COPY

LABORATORY GROWN DIAMOND REPORT

July 19, 2022
IGI Report Number LG537257560
Description LABORATORY GROWN DIAMOND
Shape and Cutting Style PRINCESS CUT
Measurements 6.17 X 6.02 X 4.51 MM

GRADING RESULTS

Carat Weight 1.51 CARAT
Color Grade F
Clarity Grade VS 2

ADDITIONAL GRADING INFORMATION

Polish EXCELLENT
Symmetry EXCELLENT
Fluorescence NONE

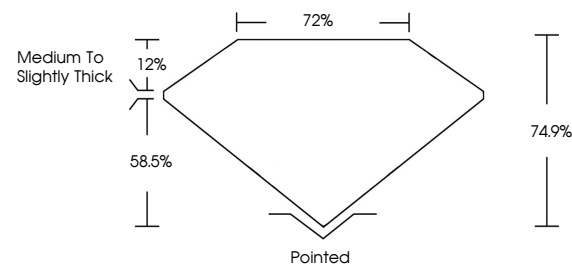
Inscription(s) LABGROWN IGI LG537257560

Comments: As Grown - No indication of post-growth treatment.

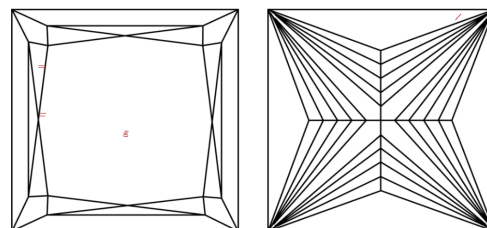
This Laboratory Grown Diamond was created by High Pressure High Temperature (HPHT) growth process. Type II

LG537257560

PROPORTIONS



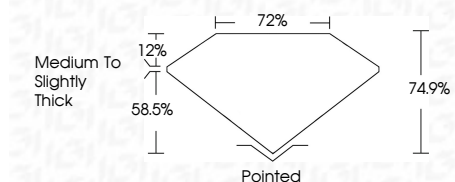
CLARITY CHARACTERISTICS



KEY TO SYMBOLS

Red symbols indicate internal characteristics.
Green symbols indicate external characteristics.

July 19, 2022
IGI Report Number LG537257560
Description LABORATORY GROWN DIAMOND
Shape and Cutting Style PRINCESS CUT
Measurements 6.17 X 6.02 X 4.51 MM
GRADING RESULTS
Carat Weight 1.51 CARAT
Color Grade F
Clarity Grade VS 2



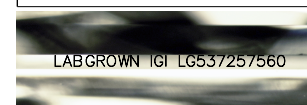
ADDITIONAL GRADING INFORMATION

Polish EXCELLENT
Symmetry EXCELLENT
Fluorescence NONE
Inscription(s) LABGROWN IGI LG537257560

Comments: As Grown - No indication of post-growth treatment. This Laboratory Grown Diamond was created by High Pressure High Temperature (HPHT) growth process. Type II

GRADING SCALES

Table with 2 rows: COLOR GRADING SCALE (CL, NC, FT, VLT, LT) and CLARITY (10x) GRADING SCALE (FL, IF, VVS, VS, SI, I).



LASERSCRIBE SM

Sample Image Used



Summary of report details including IGI logo, report number, measurements, grading results, and a detailed comment section.