



ELECTRONIC COPY

LABORATORY GROWN DIAMOND REPORT

July 18, 2022
IGI Report Number LG537257597
Description LABORATORY GROWN DIAMOND
Shape and Cutting Style OVAL BRILLIANT
Measurements 9.52 X 6.78 X 4.08 MM

GRADING RESULTS

Carat Weight 1.64 CARAT
Color Grade F
Clarity Grade VS 1

ADDITIONAL GRADING INFORMATION

Polish EXCELLENT
Symmetry EXCELLENT
Fluorescence NONE

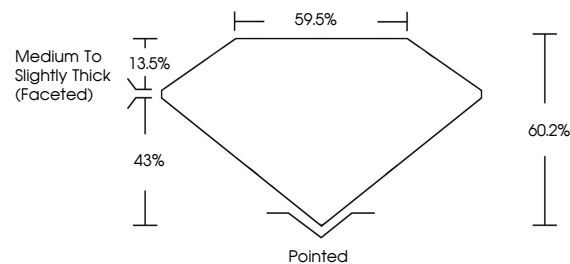
Inscription(s) LABGROWN IGI LG537257597

Comments: As Grown - No indication of post-growth treatment.

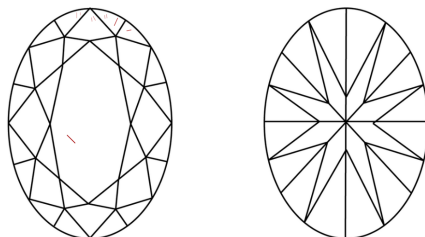
This Laboratory Grown Diamond was created by High Pressure High Temperature (HPHT) growth process. Type II

LG537257597

PROPORTIONS



CLARITY CHARACTERISTICS

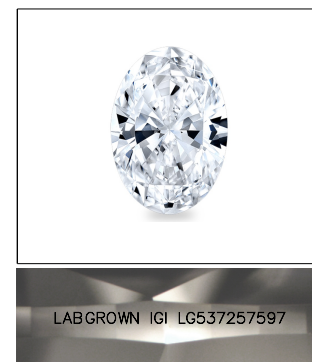


KEY TO SYMBOLS

Red symbols indicate internal characteristics.
Green symbols indicate external characteristics.

GRADING SCALES

Table with 2 rows and 5 columns showing color grading scales (CL, NC, FT, VLT, LT) and clarity (10x) grading scales (FL, IF, VVS, VS, SI, I).

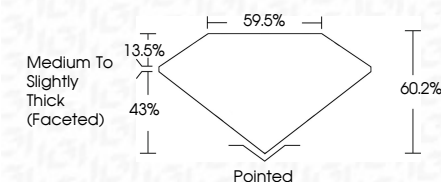


LABGROWN IGI LG537257597

LASERSCRIBE SM

Sample Image Used

July 18, 2022
IGI Report Number LG537257597
Description LABORATORY GROWN DIAMOND
Shape and Cutting Style OVAL BRILLIANT
Measurements 9.52 X 6.78 X 4.08 MM
GRADING RESULTS
Carat Weight 1.64 CARAT
Color Grade F
Clarity Grade VS 1



ADDITIONAL GRADING INFORMATION

Polish EXCELLENT
Symmetry EXCELLENT
Fluorescence NONE
Inscription(s) LABGROWN IGI LG537257597

Comments: As Grown - No indication of post-growth treatment. This Laboratory Grown Diamond was created by High Pressure High Temperature (HPHT) growth process. Type II



Summary of report details including IGI logo, report number, measurements, grading results, and a QR code.

As Grown - No indication of post-growth treatment. This Laboratory Grown Diamond was created by High Pressure High Temperature (HPHT) growth process. Type II