



ELECTRONIC COPY

LABORATORY GROWN DIAMOND REPORT

July 18, 2022
 IGI Report Number **LG538257960**
 Description **LABORATORY GROWN
DIAMOND**
 Shape and Cutting Style **CUSHION BRILLIANT**
 Measurements **6.90 X 6.39 X 4.07 MM**

GRADING RESULTS

Carat Weight **1.55 CARAT**
 Color Grade **F**
 Clarity Grade **VS 2**

ADDITIONAL GRADING INFORMATION

Polish **EXCELLENT**
 Symmetry **EXCELLENT**
 Fluorescence **NONE**

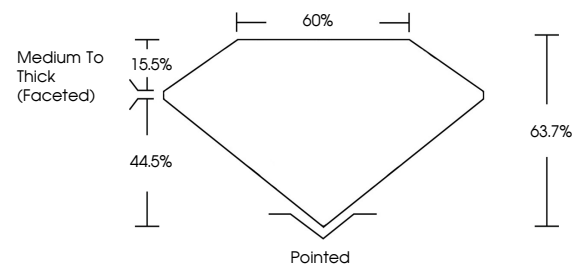
Inscription(s) **LABGROWN IGI LG538257960**

Comments: As Grown - No indication of post-growth treatment.

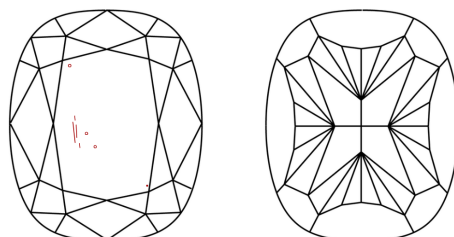
This Laboratory Grown Diamond was created by High Pressure High Temperature (HPHT) growth process. Type II

LG538257960

PROPORTIONS



CLARITY CHARACTERISTICS



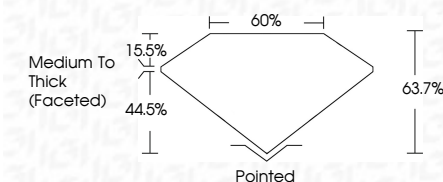
KEY TO SYMBOLS

Red symbols indicate internal characteristics.
 Green symbols indicate external characteristics.

GRADING SCALES

COLOR GRADING SCALE	CL	NC	FT	VLT	LT	
	COLORLESS D-F	NEAR COLORLESS G-J	FAINT K-M	VERY LIGHT N-R	LIGHT S-Z	
CLARITY (10x) GRADING SCALE	FL	IF	VVS	VS	SI	I
	FLAWLESS INTERNALLY FLAWLESS	VERY VERY SLIGHTLY INCLUDED	VERY SLIGHTLY INCLUDED	SLIGHTLY INCLUDED	INCLUDED	

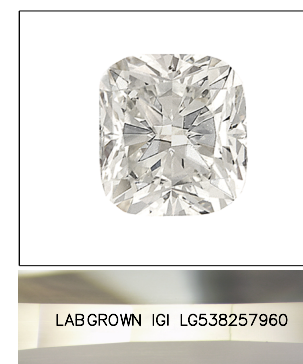
July 18, 2022
 IGI Report Number **LG538257960**
 Description **LABORATORY GROWN
DIAMOND**
 Shape and Cutting Style **CUSHION BRILLIANT**
 Measurements **6.90 X 6.39 X 4.07 MM**
GRADING RESULTS
 Carat Weight **1.55 CARAT**
 Color Grade **F**
 Clarity Grade **VS 2**



ADDITIONAL GRADING INFORMATION

Polish **EXCELLENT**
 Symmetry **EXCELLENT**
 Fluorescence **NONE**
 Inscription(s) **LABGROWN IGI LG538257960**

Comments: As Grown - No indication of post-growth treatment.
 This Laboratory Grown Diamond was created by High Pressure High Temperature (HPHT) growth process. Type II



LABGROWN IGI LG538257960

LASERSCRIBESM

Sample Image Used



July 18, 2022	IGI Report No LG538257960	1.55 CARAT	F	VS 2	63.7%	60%	Medium To Thick (Faceted)	Pointed	EXCELLENT	EXCELLENT	NONE	LABGROWN IGI LG538257960	Comments: As Grown - No indication of post-growth treatment. This Laboratory Grown Diamond was created by High Pressure High Temperature (HPHT) growth process. Type II
CUSHION BRILLIANT	6.90 X 6.39 X 4.07 MM	Color Grade	Clarity Grade	Depth	Table	Girdle	Culet	Polish	Symmetry	Fluorescence	Inscription(s)	Comments:	