



ELECTRONIC COPY

LABORATORY GROWN DIAMOND REPORT

July 18, 2022
IGI Report Number LG538257961
Description LABORATORY GROWN DIAMOND
Shape and Cutting Style OVAL BRILLIANT
Measurements 9.25 X 6.58 X 4.13 MM

GRADING RESULTS

Carat Weight 1.55 CARAT
Color Grade F
Clarity Grade VVS 2

ADDITIONAL GRADING INFORMATION

Polish VERY GOOD
Symmetry VERY GOOD
Fluorescence NONE

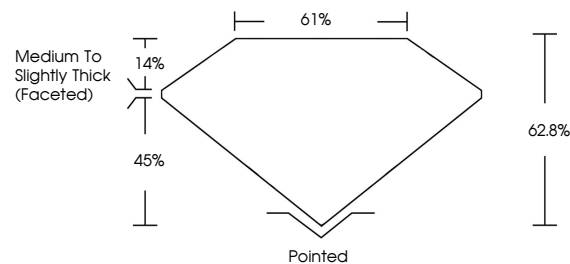
Inscription(s) LABGROWN IGI LG538257961

Comments: As Grown - No indication of post-growth treatment.

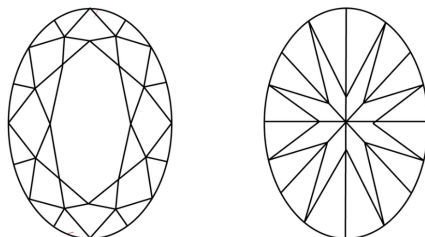
This Laboratory Grown Diamond was created by High Pressure High Temperature (HPHT) growth process. Type II

LG538257961

PROPORTIONS



CLARITY CHARACTERISTICS



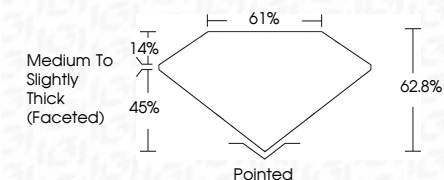
KEY TO SYMBOLS

Red symbols indicate internal characteristics.
Green symbols indicate external characteristics.

GRADING SCALES

Table showing grading scales for Color (CL), Clarity (10x), and other categories with their corresponding grades.

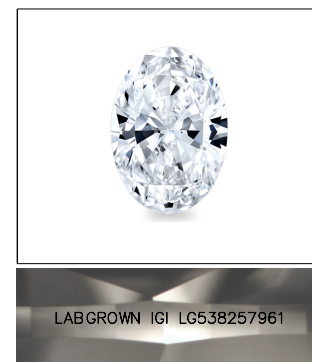
July 18, 2022
IGI Report Number LG538257961
Description LABORATORY GROWN DIAMOND
Shape and Cutting Style OVAL BRILLIANT
Measurements 9.25 X 6.58 X 4.13 MM
GRADING RESULTS
Carat Weight 1.55 CARAT
Color Grade F
Clarity Grade VVS 2



ADDITIONAL GRADING INFORMATION

Polish VERY GOOD
Symmetry VERY GOOD
Fluorescence NONE
Inscription(s) LABGROWN IGI LG538257961

Comments: As Grown - No indication of post-growth treatment. This Laboratory Grown Diamond was created by High Pressure High Temperature (HPHT) growth process. Type II



LASERSCRIBE SM
Sample Image Used



Summary table of report details including date, report number, measurements, grading results, and additional information.

As Grown - No indication of post-growth treatment. This Laboratory Grown Diamond was created by High Pressure High Temperature (HPHT) growth process. Type II