

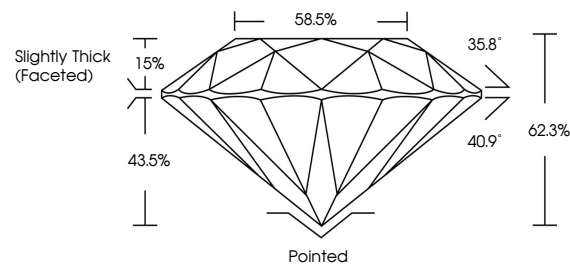


**ELECTRONIC COPY**

**LABORATORY GROWN DIAMOND REPORT**

LG538270045

**PROPORTIONS**



**GRADING SCALES**

COLOR GRADING SCALE	CL	NC	FT	VL	LT	
	COLORLESS D-F	NEAR COLORLESS G-J	FAINT K-M	VERY LIGHT N-R	LIGHT S-Z	
CLARITY (10x) GRADING SCALE	FL	IF	VVS	VS	SI	I
	FLAWLESS INTERNALLY FLAWLESS	VERY VERY SLIGHTLY INCLUDED	VERY SLIGHTLY INCLUDED	SLIGHTLY INCLUDED	INCLUDED	

September 6, 2022

IGI Report Number

LG538270045

Description

LABORATORY GROWN  
DIAMOND

Shape and Cutting Style

ROUND BRILLIANT

Measurements

6.65 - 6.70 X 4.16 MM

**GRADING RESULTS**

Carat Weight

1.15 CARAT

Color Grade

D

Clarity Grade

VVS 1

Cut Grade

IDEAL

September 6, 2022

IGI Report Number

LG538270045

Description

LABORATORY GROWN  
DIAMOND

Shape and Cutting Style

ROUND BRILLIANT

Measurements

6.65 - 6.70 X 4.16 MM

**GRADING RESULTS**

Carat Weight

1.15 CARAT

Color Grade

D

Clarity Grade

VVS 1

Cut Grade

IDEAL

**ADDITIONAL GRADING INFORMATION**

Polish

EXCELLENT

Symmetry

EXCELLENT

Fluorescence

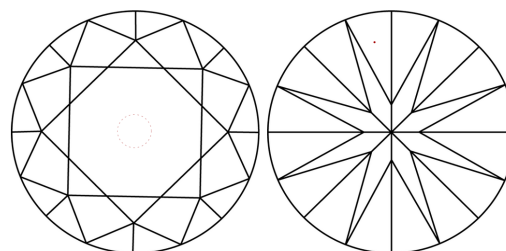
NONE

Inscription(s)

LABGROWN IGI LG538270045

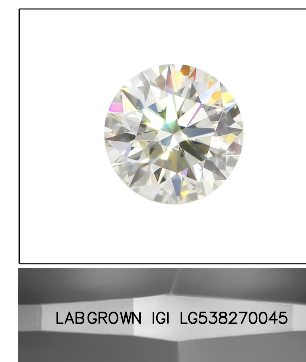
Comments: As Grown - No indication of post-growth treatment.  
This Laboratory Grown Diamond was created by High Pressure High Temperature (HPHT) growth process.  
Type II

**CLARITY CHARACTERISTICS**



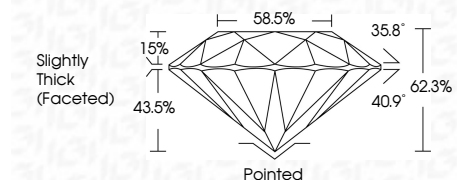
**KEY TO SYMBOLS**

Red symbols indicate internal characteristics.  
Green symbols indicate external characteristics.



LASERSCRIBE<sup>SM</sup>

Sample Image Used



**ADDITIONAL GRADING INFORMATION**

Polish

EXCELLENT

Symmetry

EXCELLENT

Fluorescence

NONE

Inscription(s)

LABGROWN IGI LG538270045

Comments: As Grown - No indication of post-growth treatment.  
This Laboratory Grown Diamond was created by High Pressure High Temperature (HPHT) growth process.  
Type II



**IGI**

September 6, 2022	IGI Report No LG538270045	ROUND BRILLIANT	6.65 - 6.70 X 4.16 MM	1.15 CARAT	D	VVS 1	IDEAL	62.3%	58.5%	Slightly Thick (Faceted)	Pointed	EXCELLENT	EXCELLENT	NONE	LABGROWN IGI LG538270045	As Grown - No indication of post-growth treatment. The Laboratory Grown Diamond was created by High Pressure High Temperature (HPHT) growth process. Type II
-------------------	---------------------------	-----------------	-----------------------	------------	---	-------	-------	-------	-------	--------------------------	---------	-----------	-----------	------	--------------------------	--