

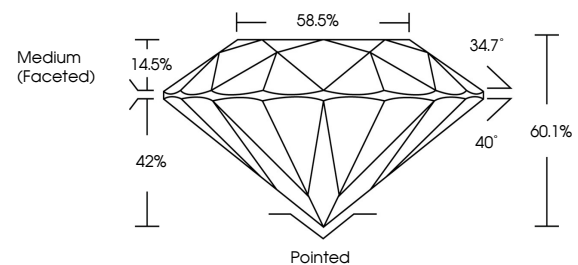


**ELECTRONIC COPY**

**LABORATORY GROWN DIAMOND REPORT**

LG538270067

**PROPORTIONS**



**GRADING SCALES**

| COLOR GRADING SCALE         | CL                           | NC                          | FT                     | VLT               | LT        |   |
|-----------------------------|------------------------------|-----------------------------|------------------------|-------------------|-----------|---|
|                             | COLORLESS D-F                | NEAR COLORLESS G-J          | FAINT K-M              | VERY LIGHT N-R    | LIGHT S-Z |   |
| CLARITY (10x) GRADING SCALE | FL                           | IF                          | VVS                    | VS                | SI        | I |
|                             | FLAWLESS INTERNALLY FLAWLESS | VERY VERY SLIGHTLY INCLUDED | VERY SLIGHTLY INCLUDED | SLIGHTLY INCLUDED | INCLUDED  |   |

September 2, 2022

IGI Report Number

LG538270067

Description

**LABORATORY GROWN  
DIAMOND**

Shape and Cutting Style

**ROUND BRILLIANT**

Measurements

**6.70 - 6.75 X 4.04 MM**

**GRADING RESULTS**

Carat Weight

**1.13 CARAT**

Color Grade

**D**

Clarity Grade

**VVS 1**

Cut Grade

**IDEAL**

September 2, 2022

IGI Report Number

LG538270067

Description

**LABORATORY GROWN  
DIAMOND**

Shape and Cutting Style

**ROUND BRILLIANT**

Measurements

**6.70 - 6.75 X 4.04 MM**

**GRADING RESULTS**

Carat Weight

**1.13 CARAT**

Color Grade

**D**

Clarity Grade

**VVS 1**

Cut Grade

**IDEAL**

**ADDITIONAL GRADING INFORMATION**

Polish

**EXCELLENT**

Symmetry

**EXCELLENT**

Fluorescence

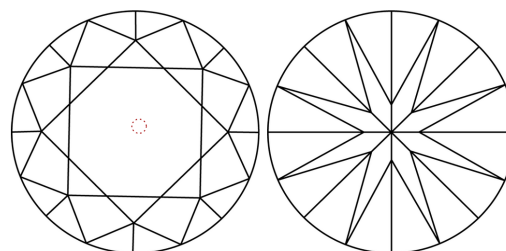
**NONE**

Inscription(s)

**LABGROWN IGI LG538270067**

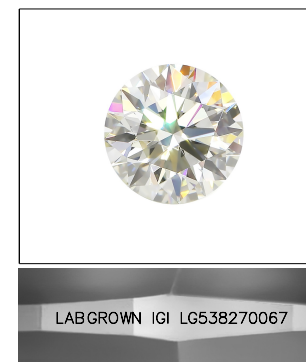
Comments: As Grown - No indication of post-growth treatment.  
This Laboratory Grown Diamond was created by High Pressure High Temperature (HPHT) growth process. Type II

**CLARITY CHARACTERISTICS**



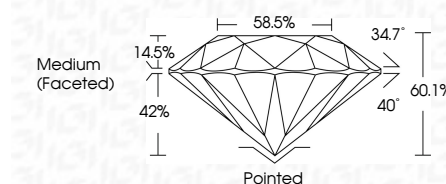
**KEY TO SYMBOLS**

Red symbols indicate internal characteristics.  
Green symbols indicate external characteristics.



**LASERSCRIBE<sup>SM</sup>**

Sample Image Used



**ADDITIONAL GRADING INFORMATION**

Polish

**EXCELLENT**

Symmetry

**EXCELLENT**

Fluorescence

**NONE**

Inscription(s)

**LABGROWN IGI LG538270067**

Comments: As Grown - No indication of post-growth treatment.  
This Laboratory Grown Diamond was created by High Pressure High Temperature (HPHT) growth process. Type II



**IGI**

|   |                  |       |                          |
|---|------------------|-------|--------------------------|
| September 2, 2022   | 1.13 CARAT       | D     | Pointed                  |
| IGI Report No LG538270067   | VVS 1            | IDEAL | EXCELLENT                |
| ROUND BRILLIANT   | 60.1%            | 60.1% | EXCELLENT                |
| 6.70 - 6.75 X 4.04 MM   | 58.5%            | 58.5% | NONE                     |
| Carat Weight  | Medium (Faceted) |       | LABGROWN IGI LG538270067 |
| Color Grade   |                  |       |                          |
| Clarity Grade   |                  |       |                          |
| Cut Grade   |                  |       |                          |
| Depth   |                  |       |                          |
| Table   |                  |       |                          |
| Grade   |                  |       |                          |
| Culet   |                  |       |                          |
| Polish  |                  |       |                          |
| Symmetry  |                  |       |                          |
| Fluorescence  |                  |       |                          |
| Inscription(s)  |                  |       |                          |
| Comments:   |                  |       |                          |
| As Grown - No indication of post-growth treatment.  |                  |       |                          |
| The Laboratory Grown Diamond was created by High Pressure High Temperature (HPHT) growth process. |                  |       |                          |
| Type II   |                  |       |                          |